

TA-Slider 500 T-2T



0°C - +50°C 32°F - +122°F (5-95%RH, non-condensing)

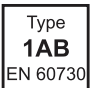


0°C - +120°C 32°F - +248°F

-20°C - +70°C -4°F - +158°F (5-95%RH, non-condensing)



Software
A
EN 60730



Type
1AB
EN 60730



IP54
EN 60730



24V



EN 60730

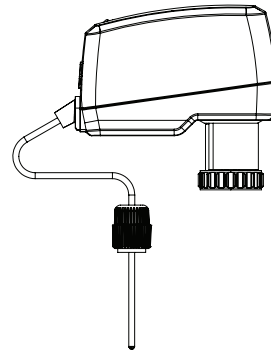


Pollution degree 2

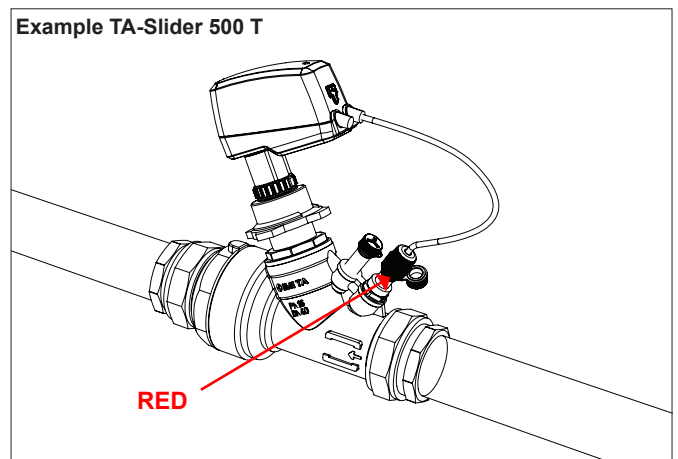
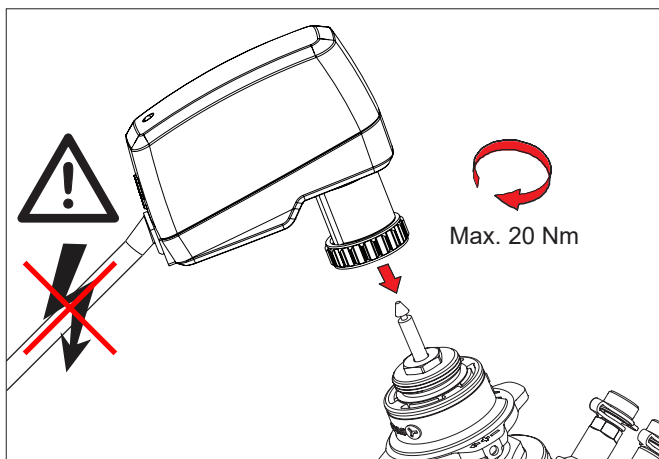
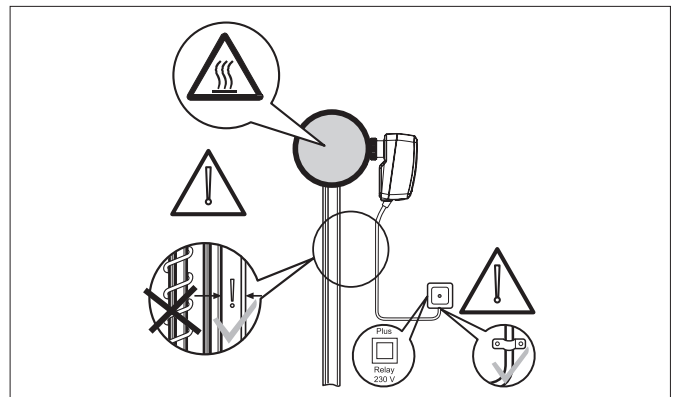
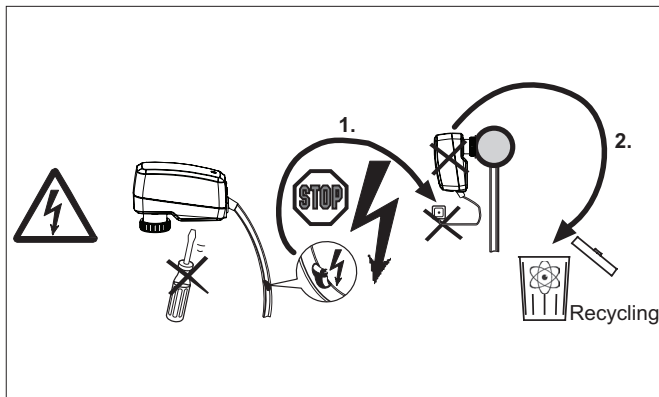
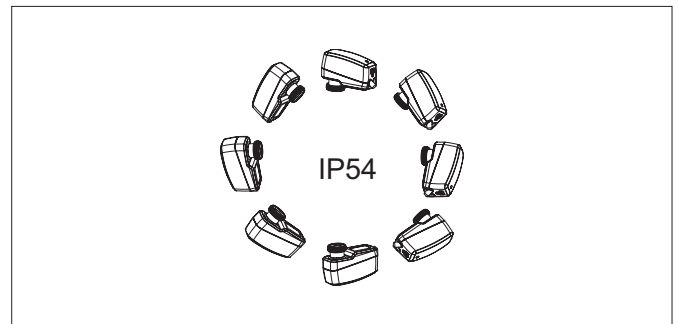
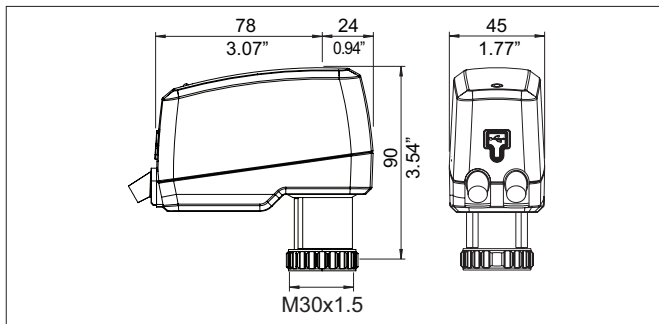
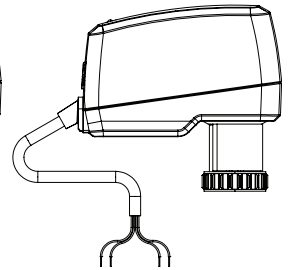


Class II
Catag. 2

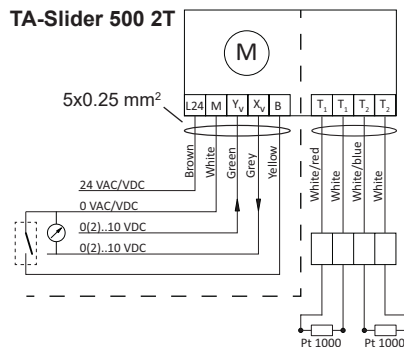
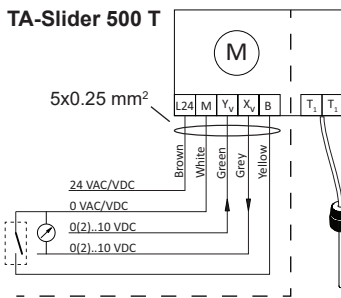
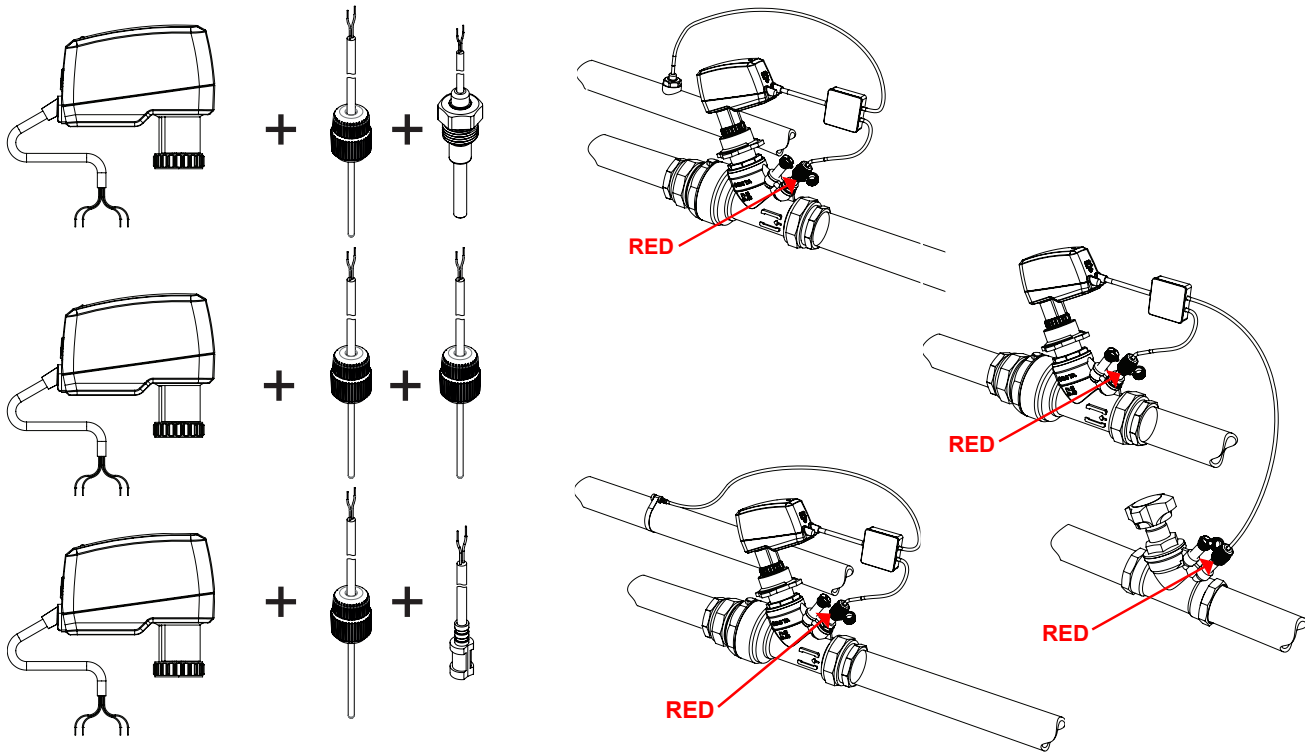
TA-Slider 500 T



TA-Slider 500 2T



Examples TA-Slider 500 2T



24 VAC/VDC operating only with safety transformer according EN 61558-2-6

| Terminal | Description |
|----------------|--|
| L24 | Power supply 24 VAC/VDC |
| M | Neutral for power supply 24 VAC/VDC and signals |
| Y _v | Input signal for proportional control 0(2)..10 VDC, 47 kΩ |
| X _v | Output signal 0(2)..10 VDC, max. 8 mA or min. load resistance 1.25 kΩ |
| B | Connection for potential free contact (e.g. open window detection), max. 100 Ω, max. 10 m cable or shielded |
| T1 | Connection to first PT1000 temperature sensor, max. 10 m total cable length between actuator and sensor head. |
| T2 | Connection to second PT1000 temperature sensor, max. 10 m total cable length between actuator and sensor head. |

Quick start

LED

We reserve the right to introduce technical alterations without prior notice.