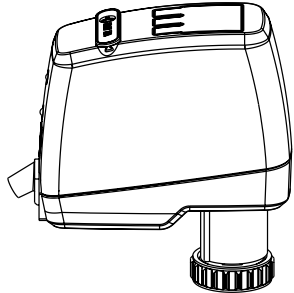


IMI TA

TA-Slider 500 Fail-safe I/O  
TA-Slider 500 Fail-safe R24



	0°C - +50°C	32°F - +122°F	(5-95%RH, non-condensing)
	0°C - +120°C	32°F - +248°F	
	-20°C - +70°C	-4°F - +158°F	(5-95%RH, non-condensing)

Software  
**A**  
EN 60730

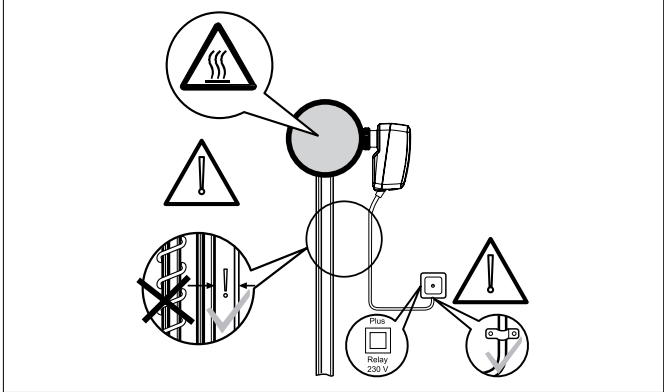
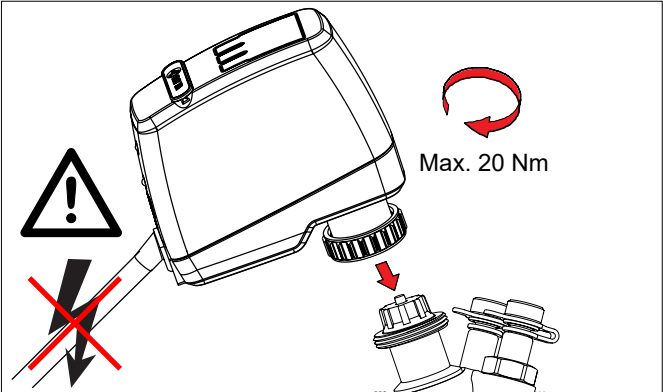
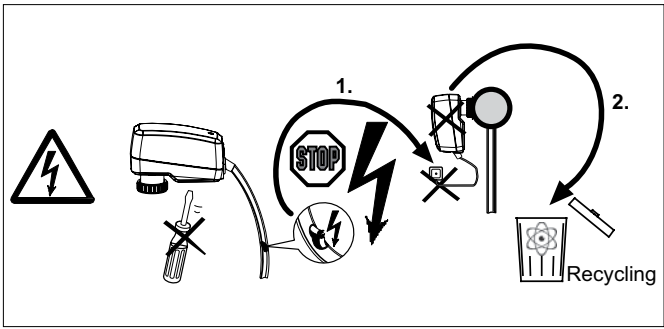
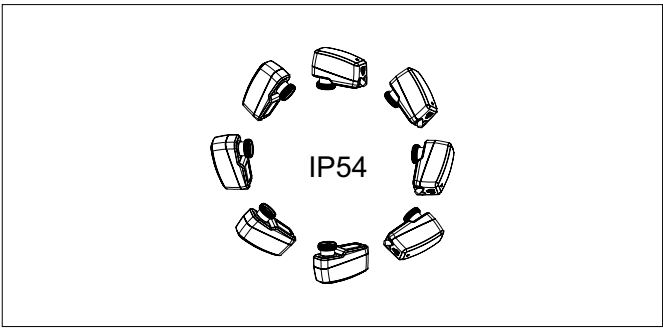
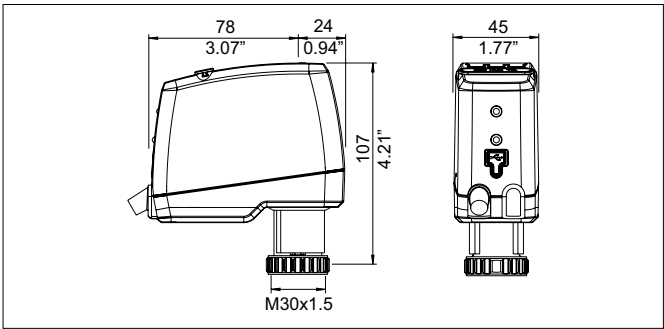
Type  
**1AB**  
EN 60730

**IP54**  
EN 60730

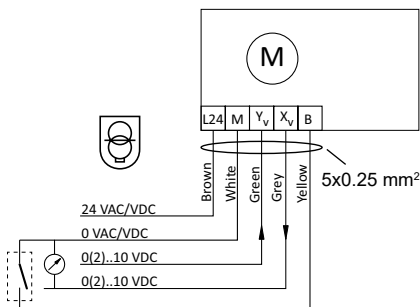
24V EN 60730

**TA-Slider 500 Fail-safe I/O**  
24 VAC/VDC

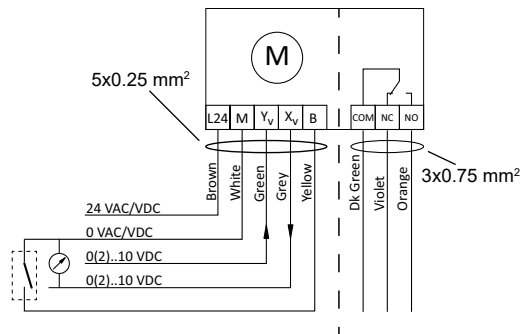
**TA-Slider 500 Fail-safe R24**  
24 VAC/VDC




## TA-Slider 500 Fail-safe I/O



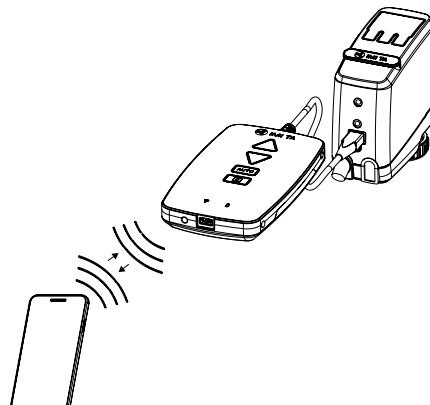
## TA-Slider 500 Fail-safe R24




Terminal	Description
L24	Power supply 24 VAC/VDC
M	Neutral for power supply 24 VAC/VDC and signals
Y <sub>v</sub>	Input signal for proportional control 0(2)...10 VDC, 47 kΩ
X <sub>v</sub>	Output signal 0(2)..10 VDC, max. 8 mA or min. load resistance 1.25 kΩ
B	Connection for potential free contact (e.g. open window detection), max. 100 Ω, max. 10 m cable or shielded
COM	R24 version: Common contact of relay, max. 1A @ 30 VAC/VDC on resistive load
NC	Normally closed contact for relay
NO	Normally open contact for relay



 24 VAC/DC operating only with safety transformer according EN 61558-2-6

## Quick start





HyTune app


## LED

**BLUE/RED**

	---	---
	---	---
	---	---
	---	---
	---	---
	---	---
	---	---

**VIOLET**

	---	---
	---	---
	---	---
	---	---
	---	---
	---	---
	---	---



Fail-safe LED  
LED

Fail-safe LED	Capacitor charge
Green	Good
Orange	Partial, fail-safe operation still possible
Red	Too low, fail-safe operation not assured