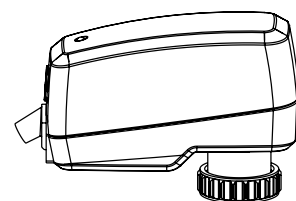


IMI TA

TA-Slider 160, TA-Slider 160 I/O, TA-Slider 160 Plus, TA-Slider 160 CO



0°C - +50°C

32°F - +122°F

(5-95%RH, non-condensing)



0°C - +120°C

32°F - +248°F



-20°C - +70°C

-4°F - +158°F

(5-95%RH, non-condensing)



Plus



Relay
230 V



24V



EN 60730



Pollution degree 2



Class II

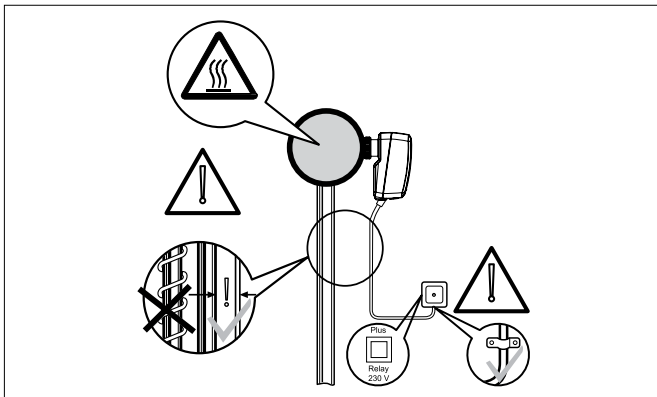
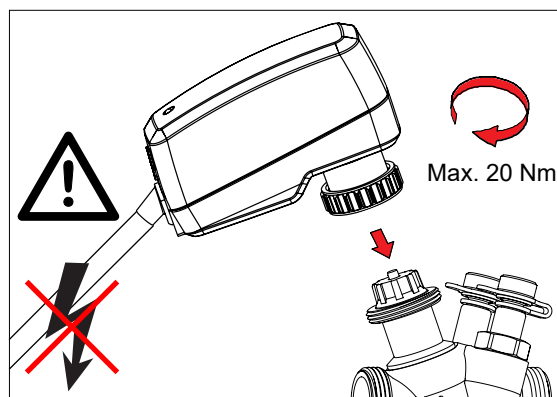
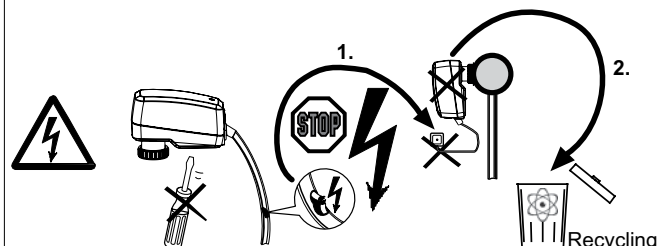
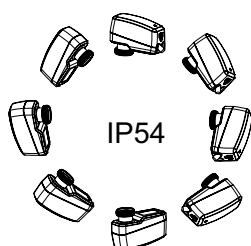
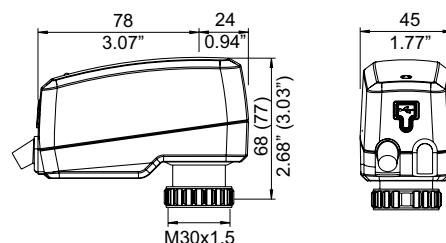
TA-Slider 160 / I/O
24 VAC/VDC



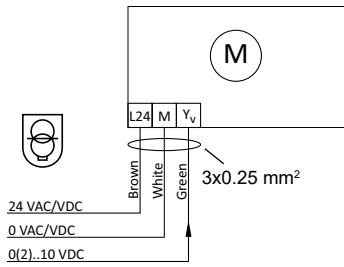
TA-Slider 160 Plus / CO
24 VAC/VDC



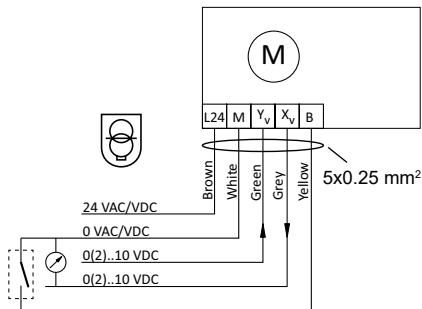
TA-Slider 160 / I/O (TA-Slider 160 Plus / CO)



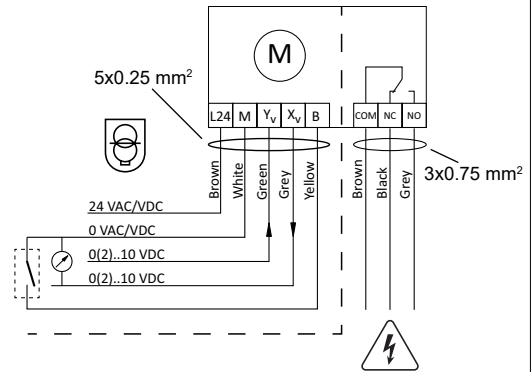
TA-Slider 160



TA-Slider 160 I/O



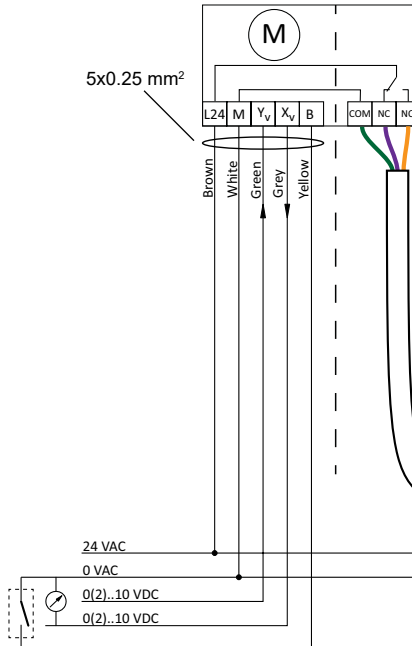
TA-Slider 160 Plus



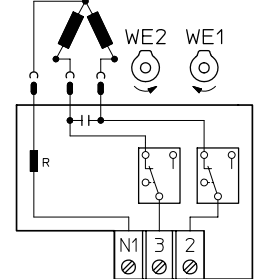
Terminal	Description
L24	Power supply 24 VAC/VDC
M	Neutral for power supply 24 VAC/VDC and signals
Y _v	Input signal for proportional control 0(2)..10 VDC, 47 kΩ
X _v	Output signal 0(2)..10 VDC, max. 8 mA or min. load resistance 1.25 kΩ
B	Connection for potential free contact (e.g. open window detection), max. 100 Ω, max. 10 m cable or shielded
COM (CO version)	Common contact of relay to connect M106 actuator
COM (Plus version)	Common contacts of relay, max. 250 VAC, max. 5A @ 250 VAC on resistive load, max. 5A @ 30 VDC on resistive load
NC	Normally closed contact for relay
NO	Normally open contact for relay

24 VAC/VDC operating only with safety transformer according EN 61558-2-6

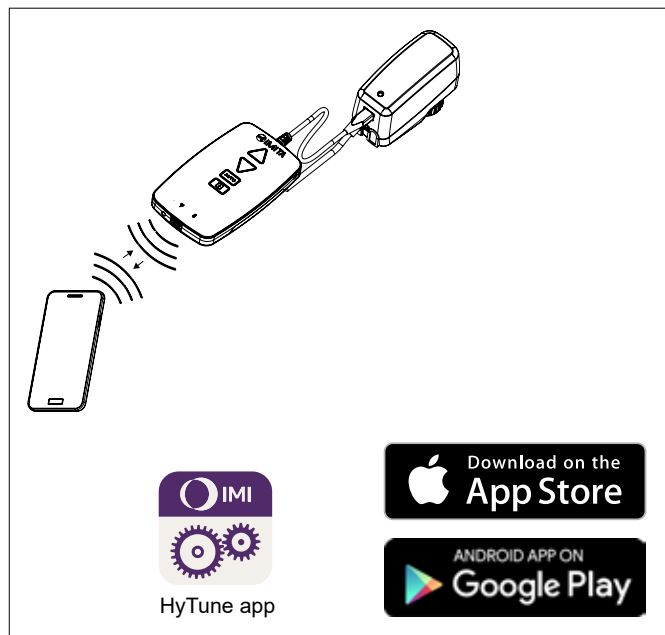
TA-Slider 160 CO



TA-M106 CO



Quick start



LED

