

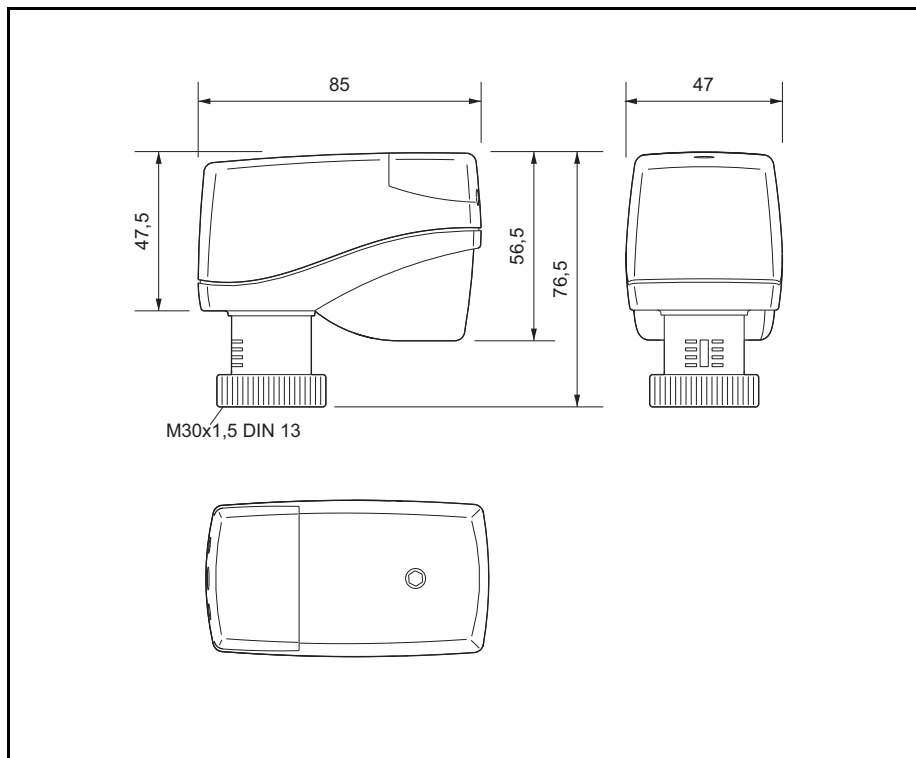
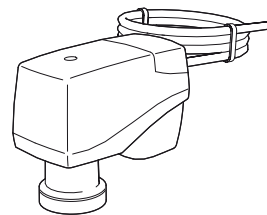
Kleinstellantrieb  
Small servo drive  
Petit actionneur  
Servomotor pequeño  
Regelaandrijving  
Mini-attuatore  
Inställningsventil  
Ovládací náhon ventilu  
Zawór nastawczy  
малый сервопривод  
Mini szelepmeghajtó  
小型执行器

de Montagehinweis  
en Mounting instructions  
fr Instructions de montage  
es Indicaciones de montaje  
nl Montage-instructie  
it Istruzioni di montaggio  
sv Montageanvisning  
cs Pokyny pro montáž  
pl Instrukcja montau  
ru Указание по монтажу  
hu Szerelési útmutató  
zh 安装提示

**MC15/24-C,  
MC15/230-C**

3.09-TA.115-99

2010-07-21



**ACHTUNG!** Montage und Installation darf nur durch qualifiziertes Fachpersonal vorgenommen werden.

**NOTICE!** Assembly and installation may only be carried out by qualified specialist personnel.

**ATTENTION!** Le montage et l'installation doivent uniquement être effectués par du personnel qualifié.

**¡ATENCIÓN!** El montaje y la instalación sólo lo puede realizar personal técnico calificado.

**LET OP!** Montage en installatie mogen slechts door geschoold personeel met de nodige kwalificatie worden uitgevoerd.

**ATTENZIONE!** Fare svolgere i lavori di montaggio e installazione solo da parte di personale qualificato.

**WARNING!** Montage och installation får endast ske av kvalificerad fackpersonal.

**POZOR!** Montáž a instalaci smí provádět pouze kvalifikovaný odborný personál.

**UWAGA!** Montaż i instalację mogą przeprowadzać tylko wykwalifikowani specjaliści.

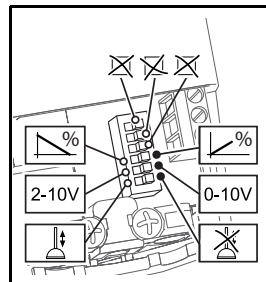
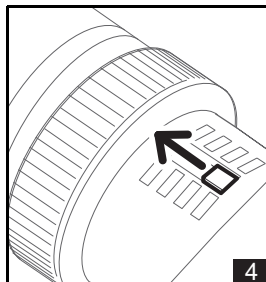
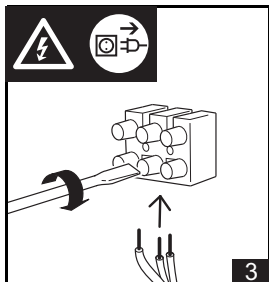
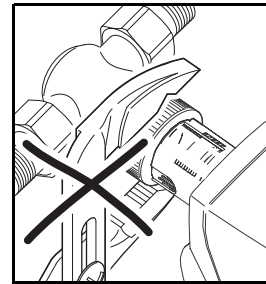
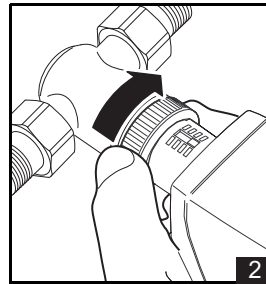
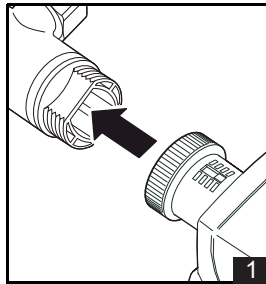
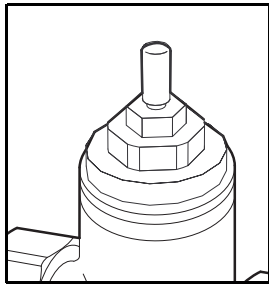
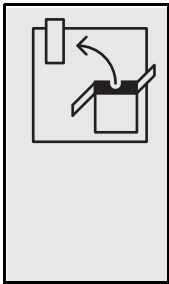
**ВНИМАНИЕ!** Монтаж и установка должны производиться только квалифицированным техперсоналом.

**FIGYELEM!** A szerelést és telepítést csak szakképzett személyek végezhetik.

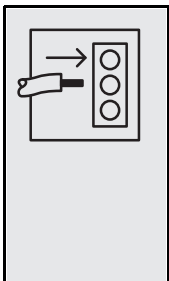
**注意** 安装工作只能由具备相应资质的专业技术人员进行。

# MC15/24-C, MC15/230-C

1



2

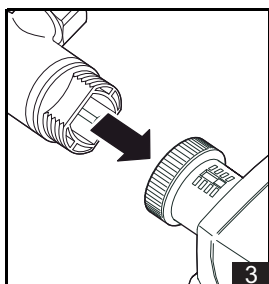
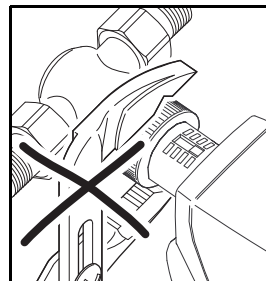
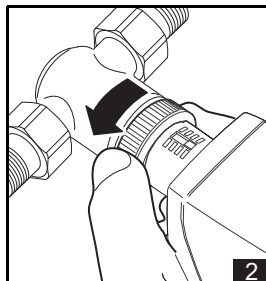
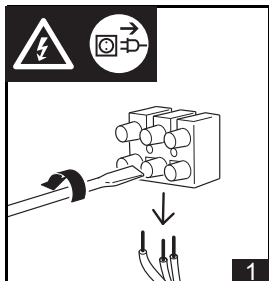
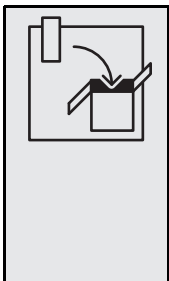


0V~/0V=	1	WH	0V~/0V=	1	WH
24V~/24V=	2	BN (V)	24V~/24V=	2	BN (▼)
0/2..10V=	3	GN (Y)	24V~/24V=	3	GN (▲)

**MC15/24-C**

**MC15/230-C**

3



**IP40**  
**0 °C..50 °C**  
 Luftfeuchte nicht kondensierend  
 Non-condensing humidity  
 Numidit  relative, non condens e  
 Humedad de aire no condensado  
 Luchtvochtigheid niet condenserend  
 Umidit  aria in assenza di condensa  
 Ej kondenserande luftfuktighet  
 Niekondenzuj ci vlhkost vzduchu  
 Niekondensuj ca wilgotno c powietrza  
 Влажность воздуха без конденсации  
 Nem kondenz l  p ratartalom  
 不产生蒸气