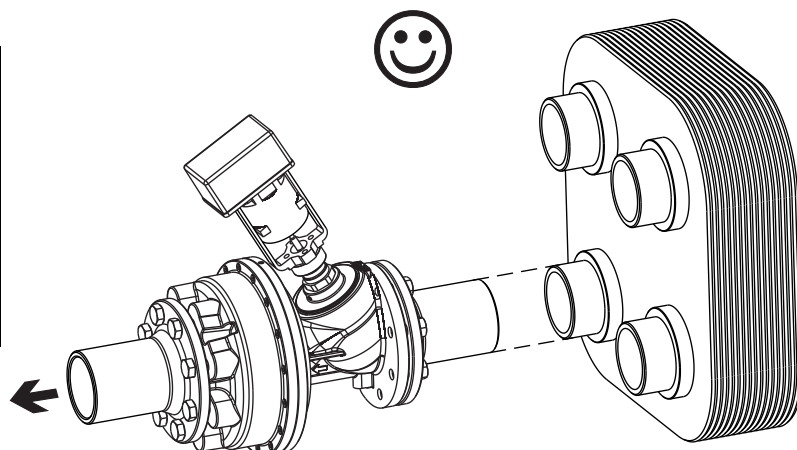
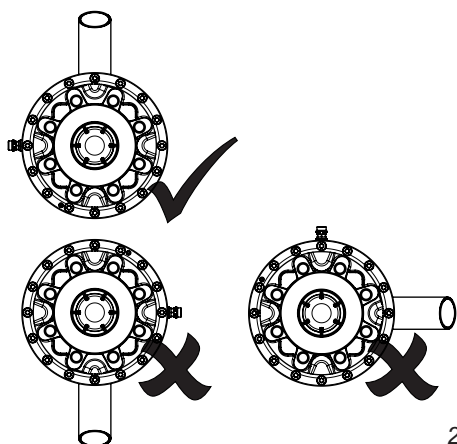


KTM 512 DN 125 LF Position - Einstellung											
	0,0	1,0	2,0	3,0	4,0	5,0	6,0	7,0	8,0	9,0	
,0	0,00	12,33	25,84	43,63	64,33	84,58	103,6	121,1	136,8	148,2	
,1	1,23	13,68	27,62	45,70	66,35	86,48	105,4	122,7	137,9	149,1	
,2	2,47	15,03	29,40	47,77	68,38	88,38	107,1	124,3	139,1	150,1	
,3	3,70	16,38	31,18	49,84	70,40	90,29	108,9	125,8	140,2	151,0	
,4	4,93	17,73	32,96	51,91	72,43	92,19	110,6	127,4	141,4	151,9	
,5	6,16	19,09	34,74	53,98	74,45	94,09	112,4	129,0	142,5	152,9	
,6	7,40	20,44	36,52	56,05	76,48	95,99	114,1	130,5	143,6	153,8	
,7	8,63	21,79	38,30	58,12	78,50	97,89	115,9	132,1	144,8	154,7	
,8	9,86	23,14	40,07	60,19	80,53	99,80	117,6	133,7	145,9	155,7	
,9	11,10	24,49	41,85	62,26	82,55	101,7	119,4	135,2	147,1	156,6	
Flow - Volumenstrom (gal/min)											

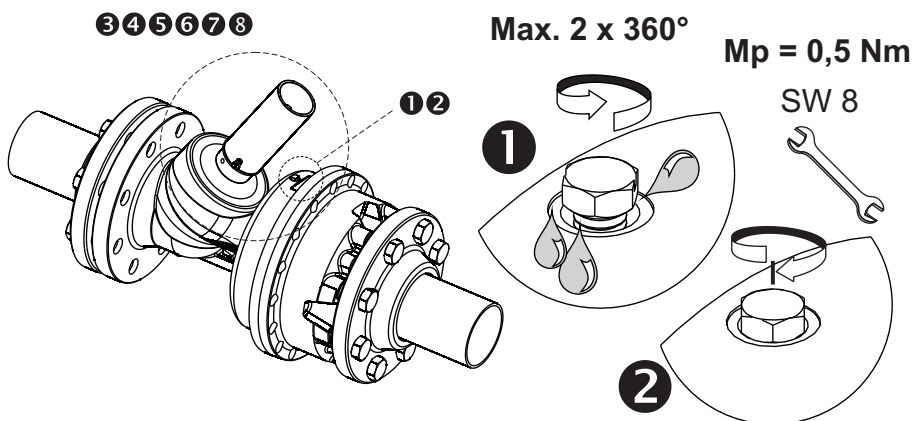
$p_1 = 58 \text{ psi}$ $p_2 = 43.5 \text{ psi}$ $\Delta p = 14.5 \text{ psi}$
 $\Delta p < > 14.5 \text{ psi} \Rightarrow \text{Flow} \approx$



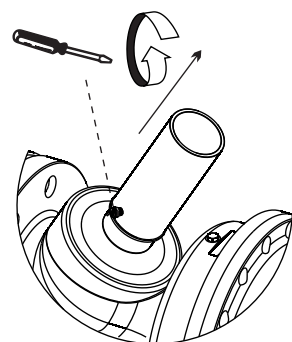
1



2

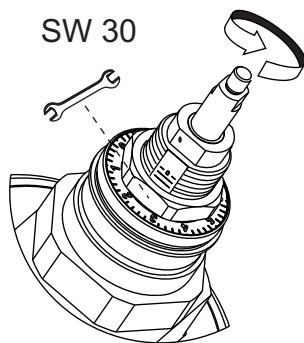


3



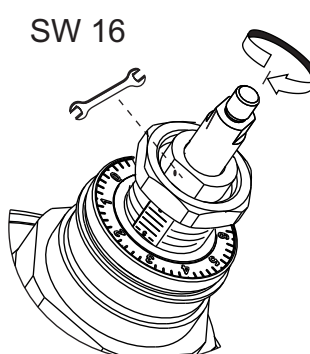
3

4



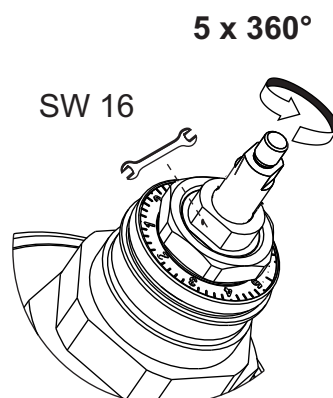
4

5



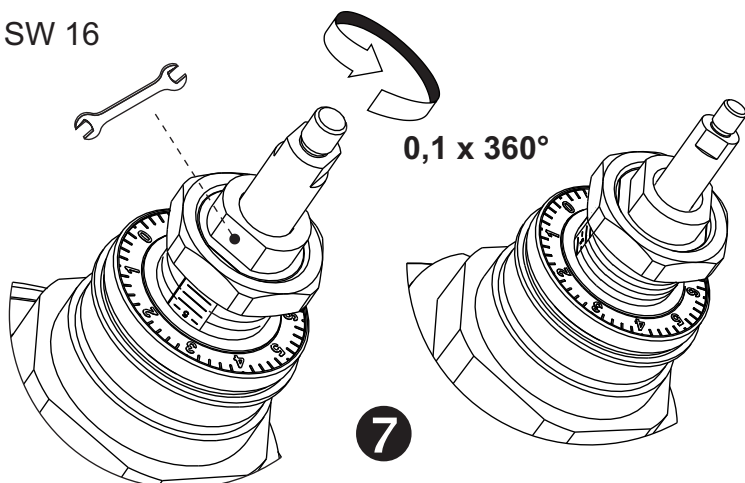
5

6



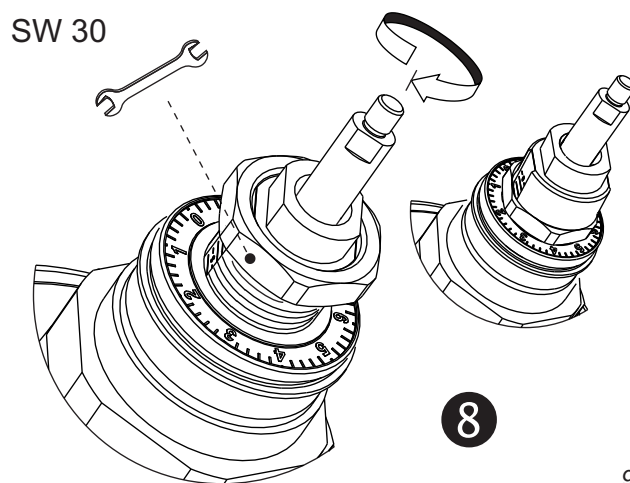
6

7



7

8

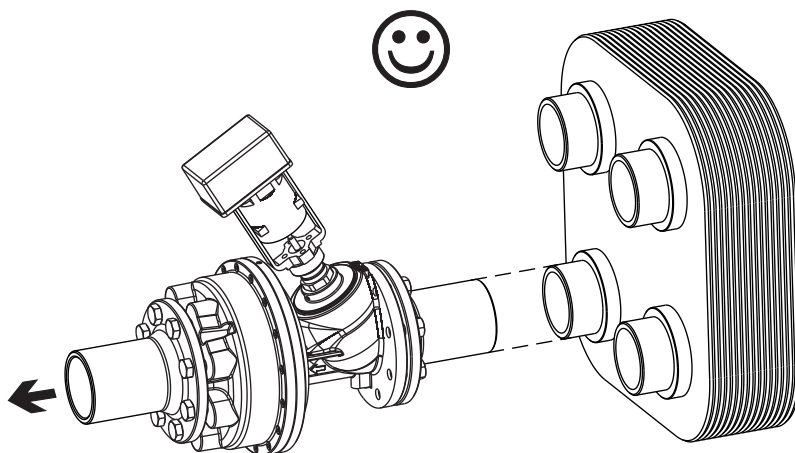


8

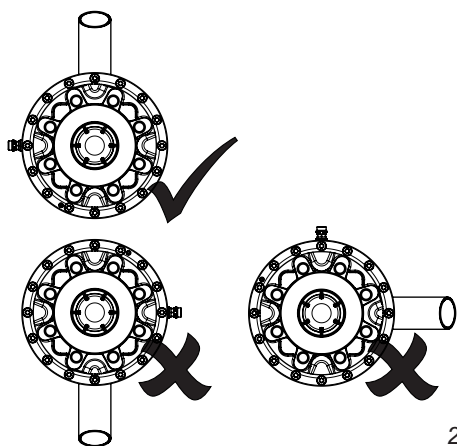
9

KTM 512 DN 125 NF											
Position - Einstellung											
	0,0	1,0	2,0	3,0	4,0	5,0	6,0	7,0	8,0	9,0	
,0	0,00	18,67	37,95	64,81	96,16	129,71	160,40	187,65	211,25	229,17	
,1	1,87	20,60	40,64	67,95	99,51	132,78	163,12	190,01	213,04	230,55	
,2	3,73	22,53	43,32	71,08	102,87	135,85	165,85	192,37	214,83	231,93	
,3	5,60	24,45	46,01	74,21	106,22	138,91	168,57	194,73	216,63	233,32	
,4	7,47	26,38	48,70	77,35	109,58	141,98	171,30	197,09	218,42	234,70	
,5	9,33	28,31	51,38	80,48	112,93	145,05	174,02	199,45	220,21	236,08	
,6	11,20	30,24	54,07	83,62	116,29	148,12	176,75	201,81	222,00	237,46	
,7	13,07	32,17	56,75	86,75	119,64	151,19	179,47	204,17	223,79	238,85	
,8	14,93	34,10	59,44	89,89	123,00	154,26	182,20	206,53	225,59	240,23	
,9	16,80	36,02	62,12	93,02	126,35	157,33	184,92	208,89	227,38	241,61	
Flow - Volumenstrom (gal/min)											

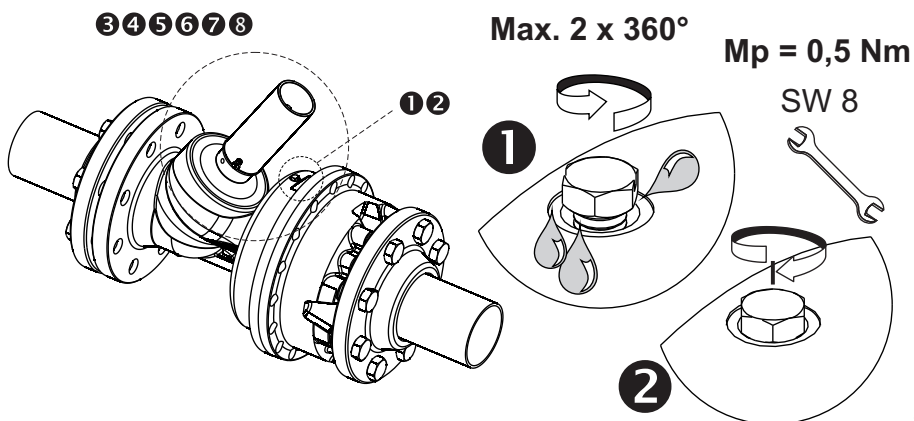
$p_1 = 58 \text{ psi}$ $p_2 = 43.5 \text{ psi}$ $\Delta p = 14.5 \text{ psi}$
 $\Delta p < > 14.5 \text{ psi} \Rightarrow \text{Flow} \approx$



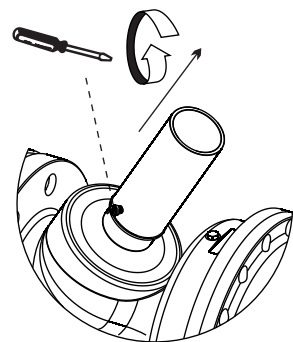
1



2

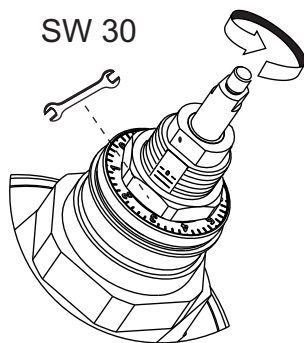


3



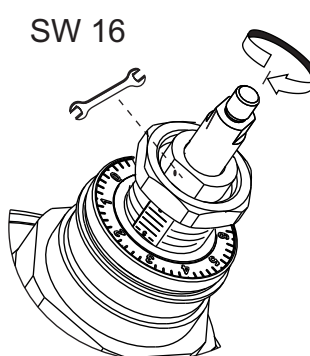
3

4



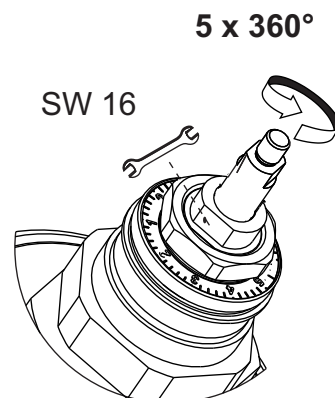
4

5



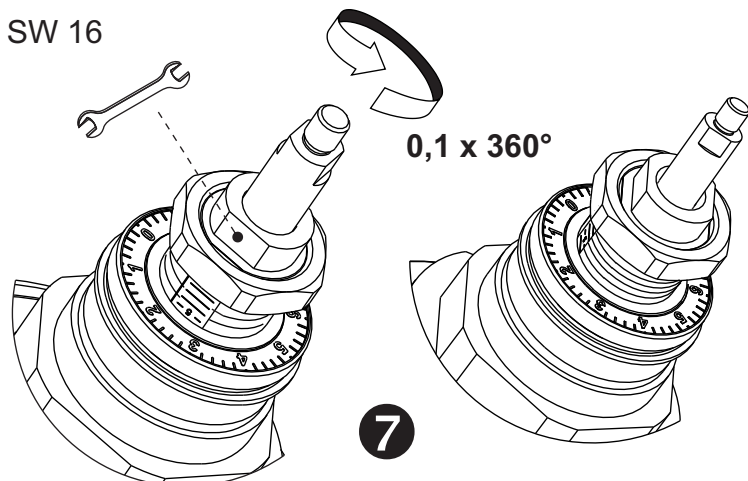
5

6



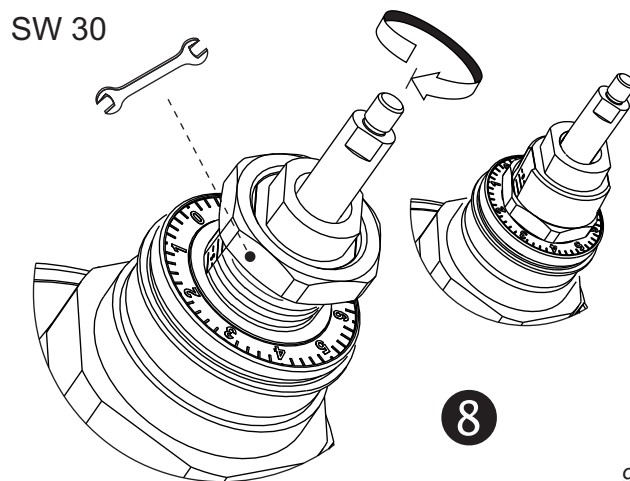
6

7



7

8



8

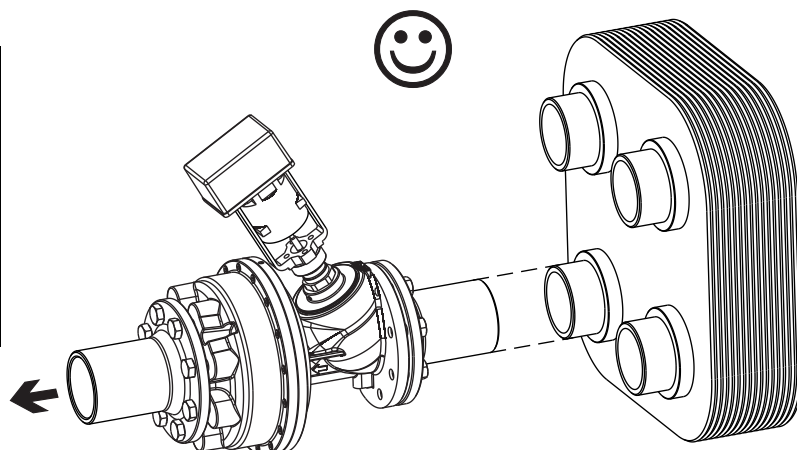
9

KTM 512 DN 125 LF ANSI150

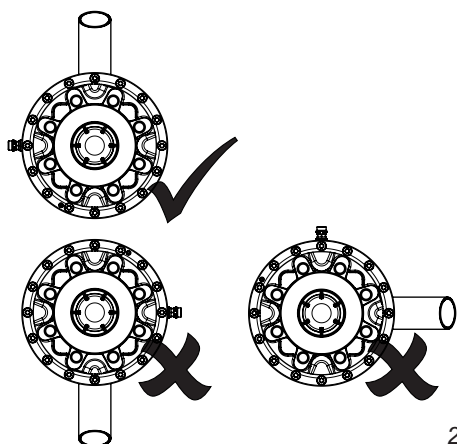


KTM 512 DN 125 LF Position - Einstellung											
	0,0	1,0	2,0	3,0	4,0	5,0	6,0	7,0	8,0	9,0	
,0	0,00	12,33	25,84	43,63	64,33	84,58	103,6	121,1	136,8	148,2	
,1	1,23	13,68	27,62	45,70	66,35	86,48	105,4	122,7	137,9	149,1	
,2	2,47	15,03	29,40	47,77	68,38	88,38	107,1	124,3	139,1	150,1	
,3	3,70	16,38	31,18	49,84	70,40	90,29	108,9	125,8	140,2	151,0	
,4	4,93	17,73	32,96	51,91	72,43	92,19	110,6	127,4	141,4	151,9	
,5	6,16	19,09	34,74	53,98	74,45	94,09	112,4	129,0	142,5	152,9	
,6	7,40	20,44	36,52	56,05	76,48	95,99	114,1	130,5	143,6	153,8	
,7	8,63	21,79	38,30	58,12	78,50	97,89	115,9	132,1	144,8	154,7	
,8	9,86	23,14	40,07	60,19	80,53	99,80	117,6	133,7	145,9	155,7	
,9	11,10	24,49	41,85	62,26	82,55	101,7	119,4	135,2	147,1	156,6	
Flow - Volumenstrom (gal/min)											

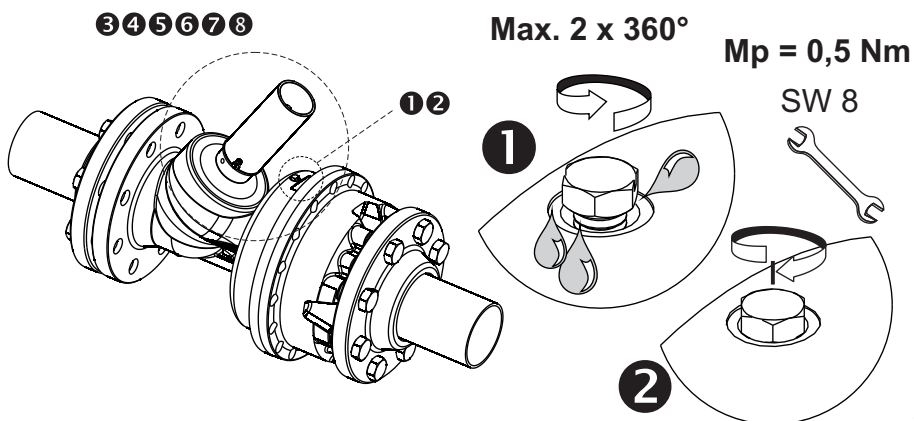
$p_1 = 58 \text{ psi}$ $p_2 = 43.5 \text{ psi}$ $\Delta p = 14.5 \text{ psi}$
 $\Delta p < > 14.5 \text{ psi} \Rightarrow \text{Flow} \approx$



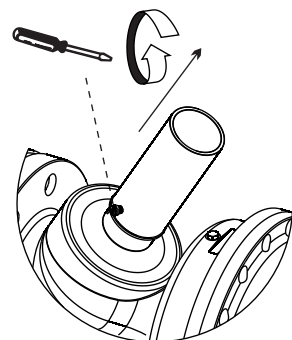
1



2

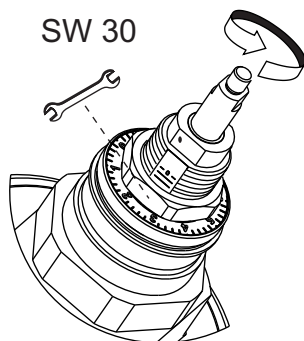


3



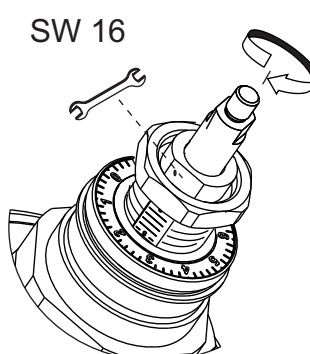
3

4



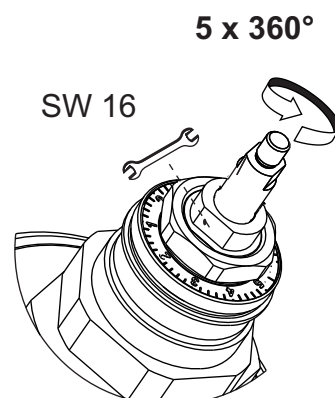
4

5



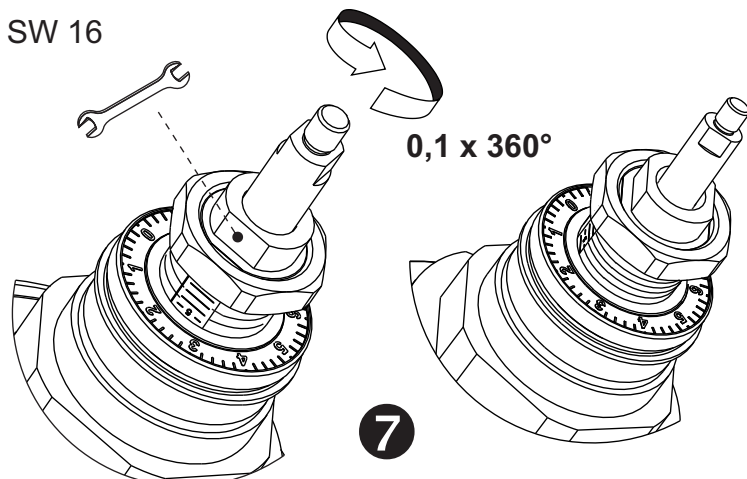
5

6



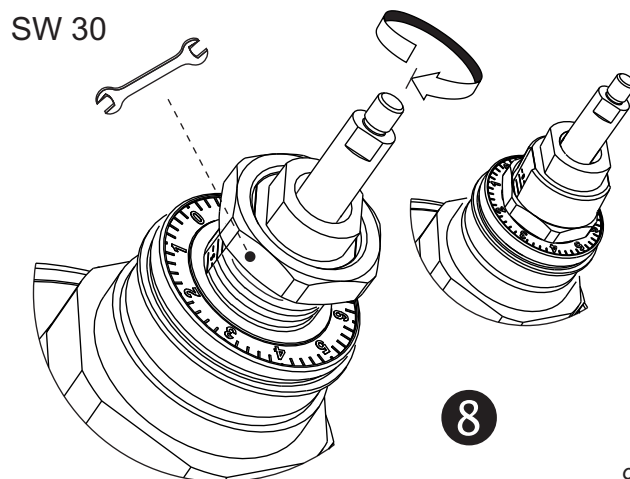
6

7



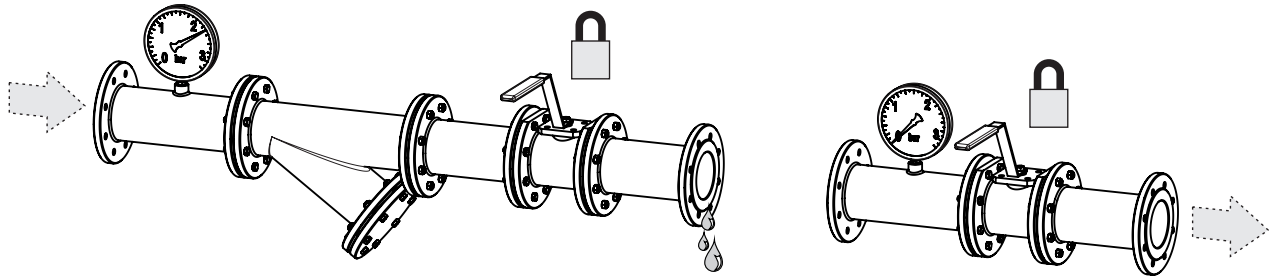
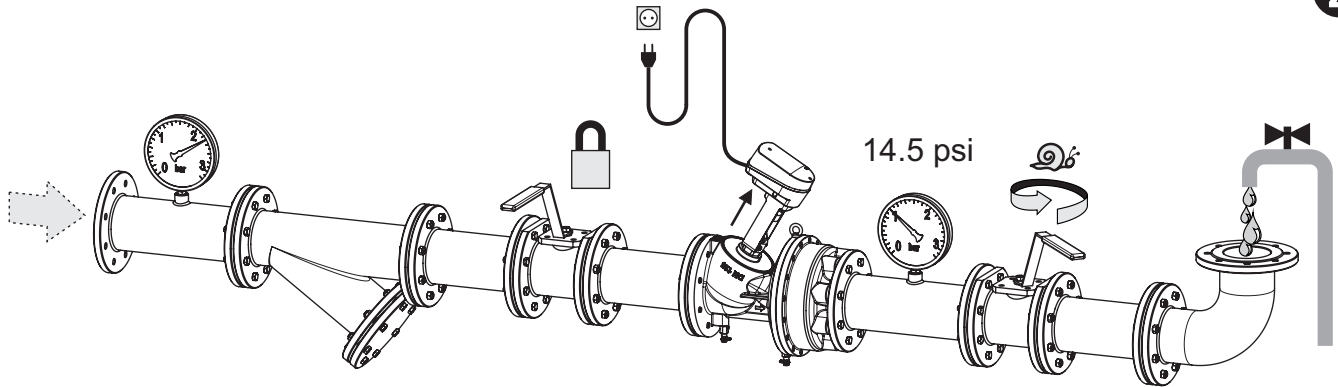
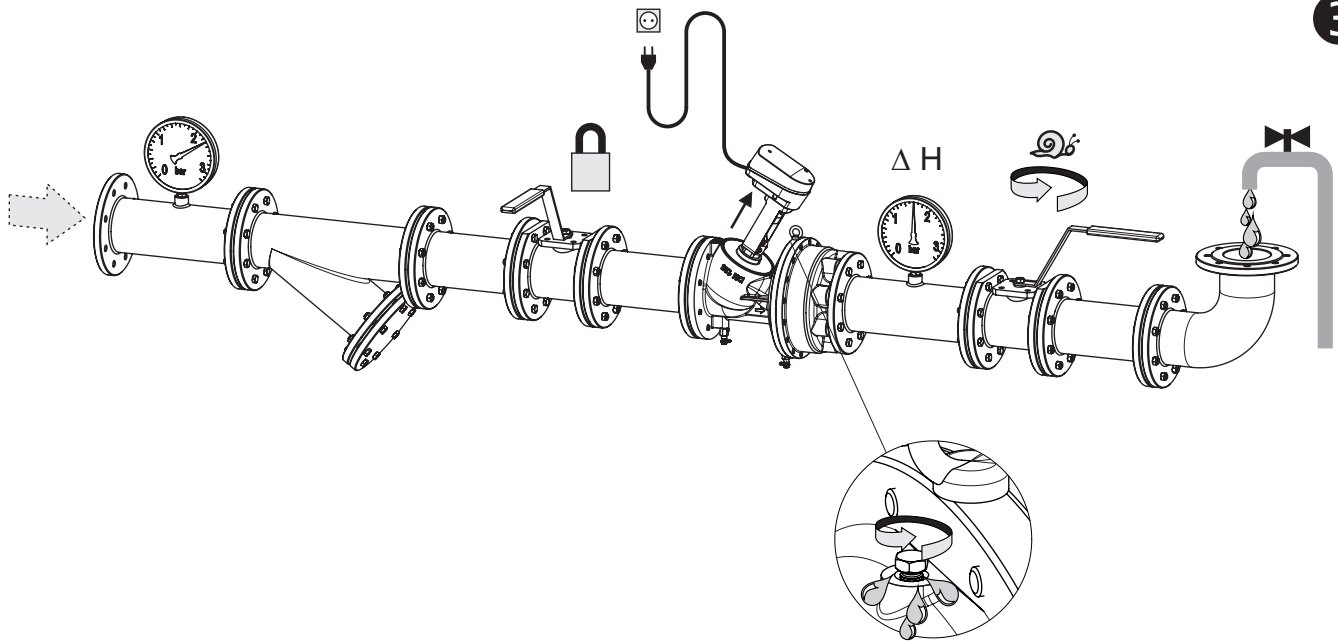
7

8



8

9

1

2

3

4
