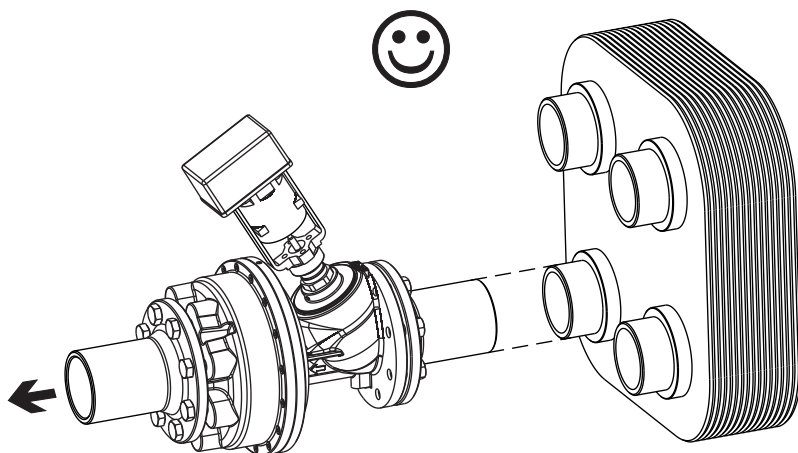
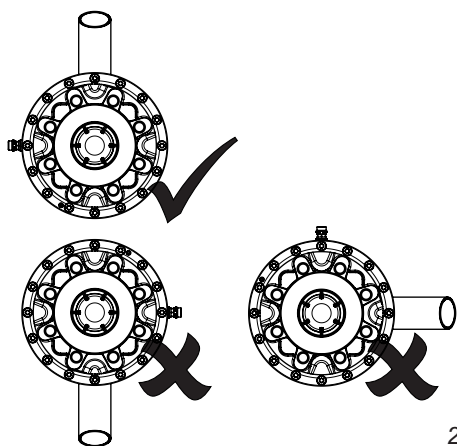


KTM 512 DN 80 LF											
Position - Einstellung											
	0,0	1,0	2,0	3,0	4,0	5,0	6,0	7,0	8,0	9,0	
,0	0,00	4,27	5,94	8,59	13,83	23,25	35,13	47,95	61,02	69,26	
,1	0,43	4,44	6,21	9,11	14,77	24,44	36,42	49,25	61,85	69,73	
,2	0,85	4,61	6,47	9,63	15,71	25,62	37,70	50,56	62,67	70,20	
,3	1,28	4,77	6,74	10,16	16,65	26,81	38,98	51,87	63,49	70,67	
,4	1,71	4,94	7,00	10,68	17,59	28,00	40,26	53,18	64,32	71,14	
,5	2,14	5,11	7,26	11,21	18,54	29,19	41,54	54,49	65,14	71,61	
,6	2,56	5,27	7,53	11,73	19,48	30,38	42,82	55,79	65,96	72,08	
,7	2,99	5,44	7,79	12,25	20,42	31,57	44,10	57,10	66,79	72,55	
,8	3,42	5,61	8,06	12,78	21,36	32,76	45,38	58,41	67,61	73,03	
,9	3,84	5,78	8,32	13,30	22,30	33,95	46,67	59,72	68,43	73,50	
Flow - Volumenstrom (gal/min)											

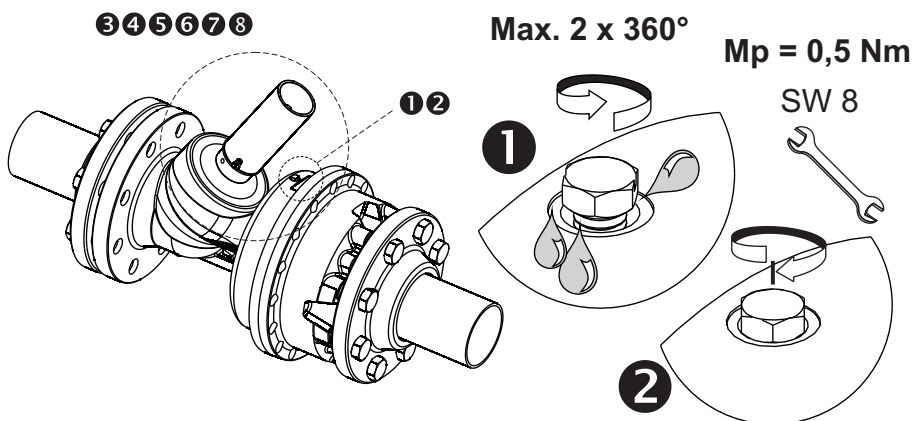
$p_1 = 58 \text{ psi}$     $p_2 = 43.5 \text{ psi}$     $\Delta p = 14.5 \text{ psi}$   
 $\Delta p < >> 14.5 \text{ psi} \Rightarrow \text{Flow} \approx$



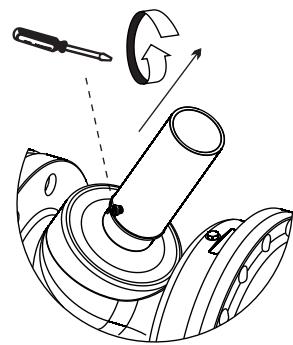
1



2

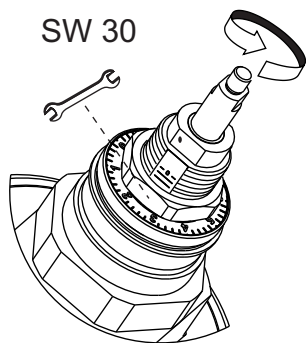


3



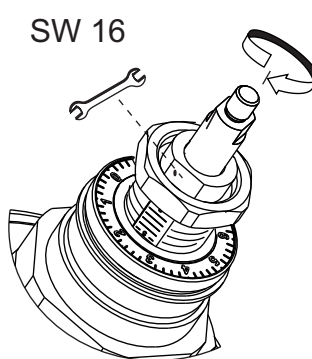
3

4



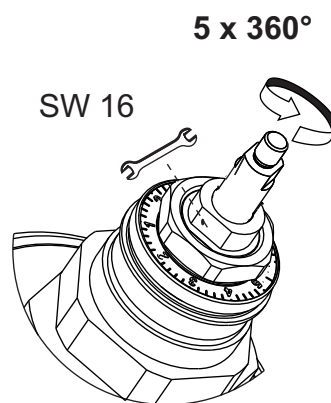
4

5



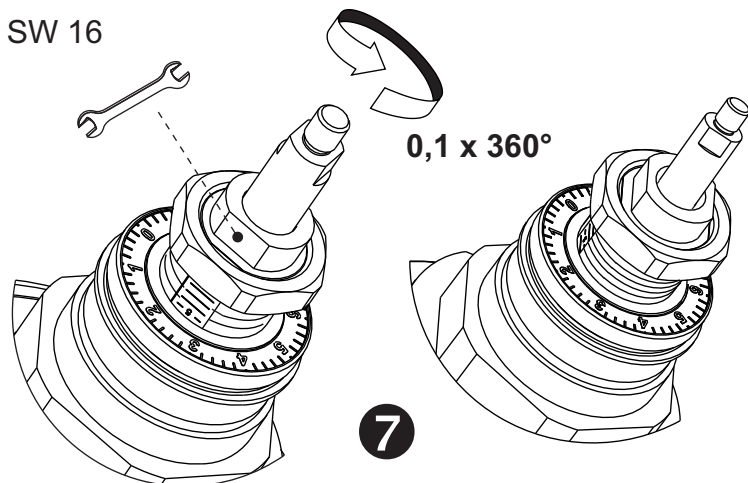
5

6



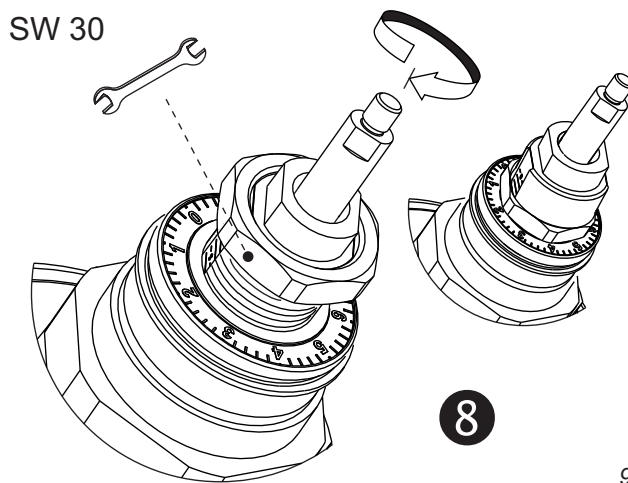
6

7



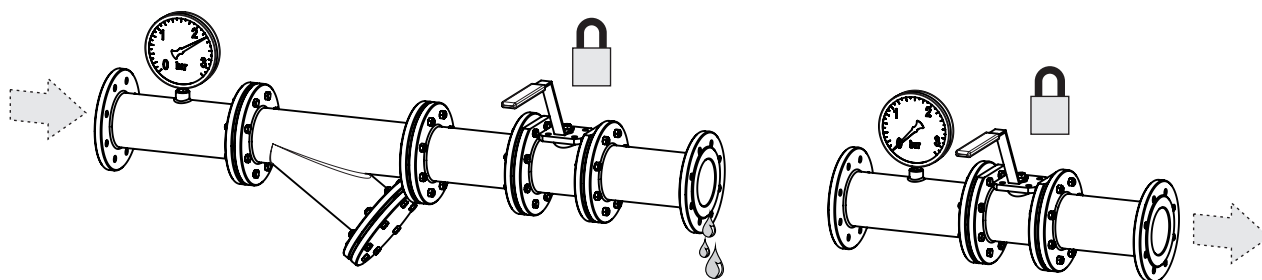
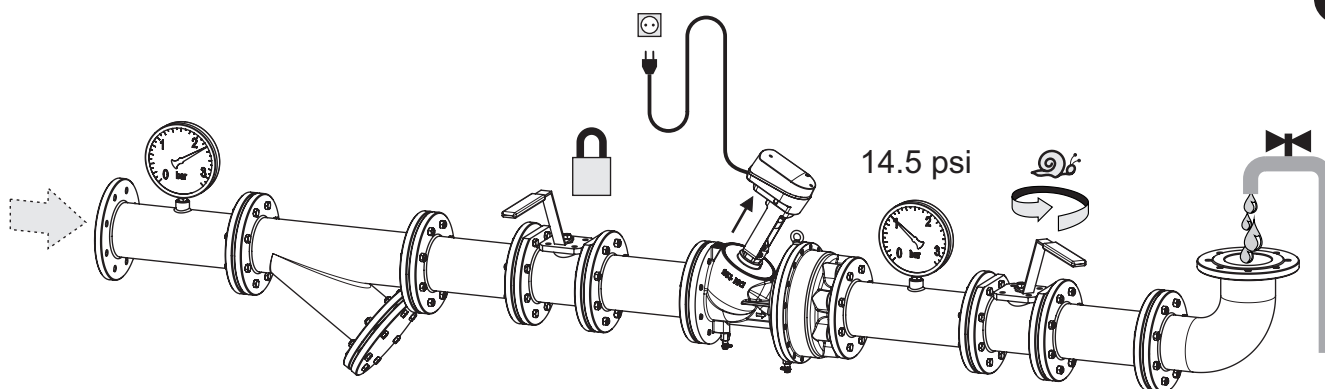
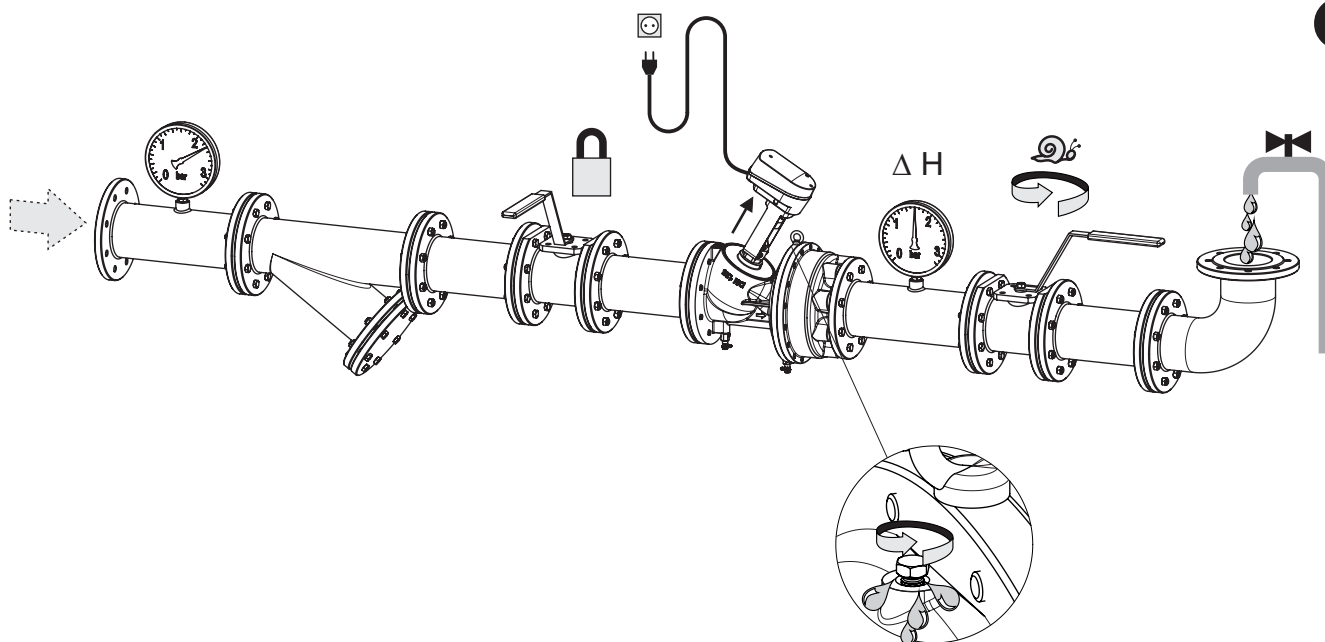
7

8



8

9

**1**

**2**

**3**

**4**
