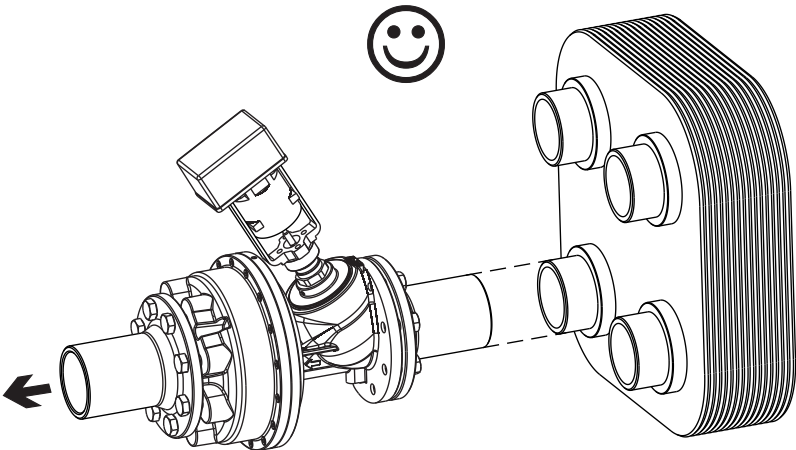


# KTM 512 DN 80 LF

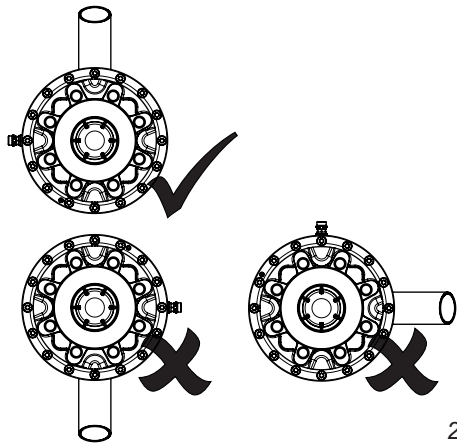


KTM 512 DN 80 LF											
Position - Einstellung											
	0,0	1,0	2,0	3,0	4,0	5,0	6,0	7,0	8,0	9,0	
,0	0,00	0,97	1,35	1,95	3,14	5,28	7,98	10,89	13,86	15,73	
,1	0,10	1,01	1,41	2,07	3,35	5,55	8,27	11,19	14,05	15,84	
,2	0,19	1,05	1,47	2,19	3,57	5,82	8,56	11,48	14,23	15,94	
,3	0,29	1,08	1,53	2,31	3,78	6,09	8,85	11,78	14,42	16,05	
,4	0,39	1,12	1,59	2,43	4,00	6,36	9,14	12,08	14,61	16,16	
,5	0,49	1,16	1,65	2,55	4,21	6,63	9,44	12,38	14,80	16,27	
,6	0,58	1,20	1,71	2,66	4,42	6,90	9,73	12,67	14,98	16,37	
,7	0,68	1,24	1,77	2,78	4,64	7,17	10,02	12,97	15,17	16,48	
,8	0,78	1,27	1,83	2,90	4,85	7,44	10,31	13,27	15,36	16,59	
,9	0,87	1,31	1,89	3,02	5,07	7,71	10,60	13,56	15,54	16,69	
Flow - Volumenstrom (m³/h)											

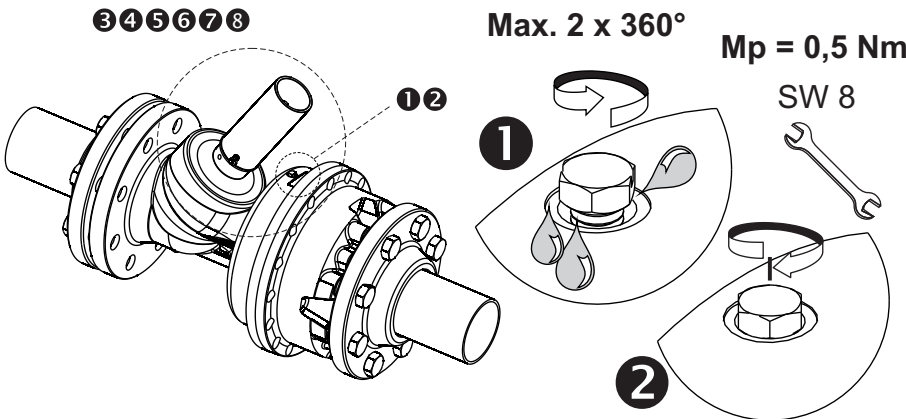
$p_1=4\text{bar}$   $p_2=3\text{bar}$   $\Delta p=1\text{bar}$   
 $\Delta p < > 1\text{bar} \Rightarrow \text{Flow} \approx$



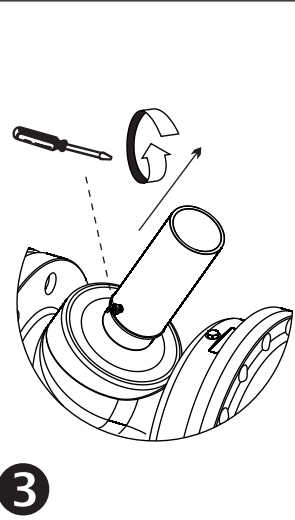
1



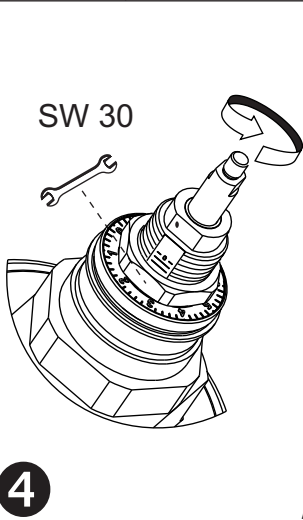
2



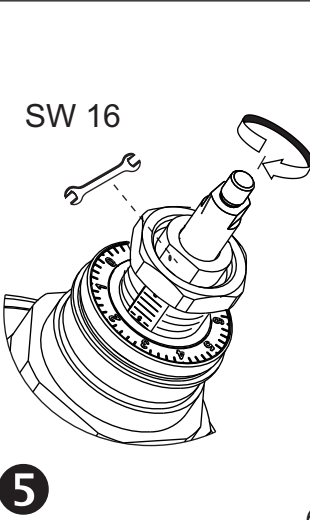
3



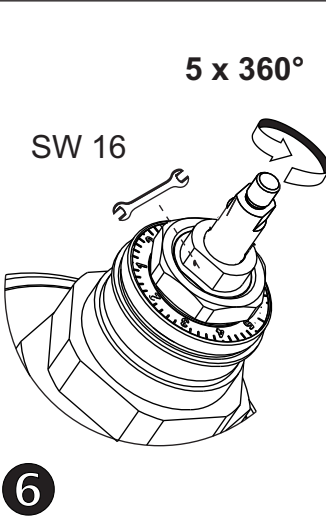
4



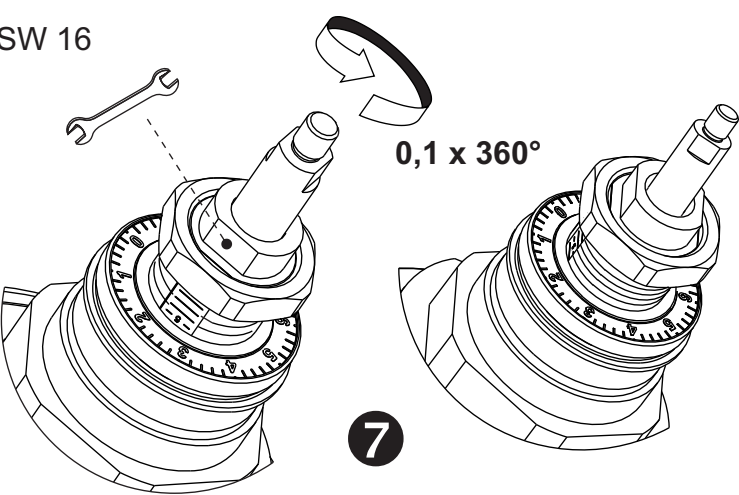
5



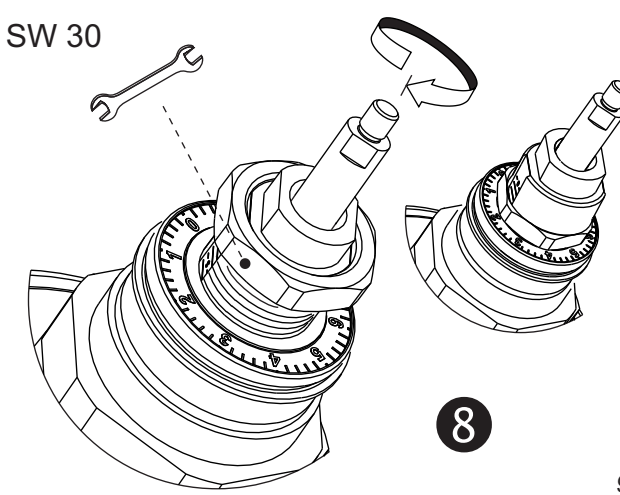
6



7



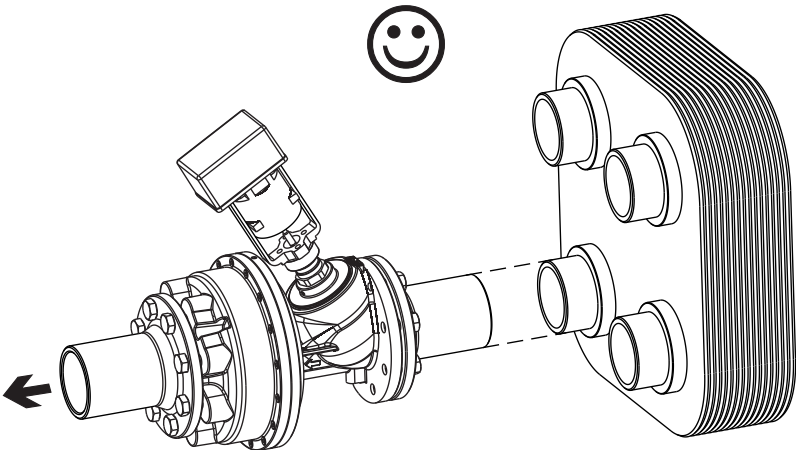
8



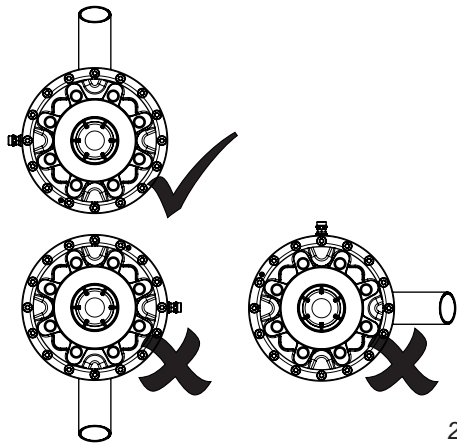
9

KTM 512 DN 80 NF											
Position - Einstellung											
	0,0	1,0	2,0	3,0	4,0	5,0	6,0	7,0	8,0	9,0	
,0	0,00	1,17	1,63	2,41	3,94	6,81	10,53	14,55	18,62	21,18	
,1	0,12	1,22	1,71	2,56	4,23	7,18	10,93	14,96	18,88	21,35	
,2	0,23	1,26	1,79	2,72	4,51	7,55	11,33	15,36	19,13	21,51	
,3	0,35	1,31	1,86	2,87	4,80	7,93	11,74	15,77	19,39	21,68	
,4	0,47	1,35	1,94	3,02	5,09	8,30	12,14	16,18	19,64	21,84	
,5	0,59	1,40	2,02	3,18	5,38	8,67	12,54	16,59	19,90	22,01	
,6	0,70	1,45	2,10	3,33	5,66	9,04	12,94	16,99	20,16	22,18	
,7	0,82	1,49	2,18	3,48	5,95	9,41	13,34	17,40	20,41	22,34	
,8	0,94	1,54	2,25	3,63	6,24	9,79	13,75	17,81	20,67	22,51	
,9	1,05	1,58	2,33	3,79	6,52	10,16	14,15	18,21	20,92	22,67	
Flow - Volumenstrom (m³/h)											

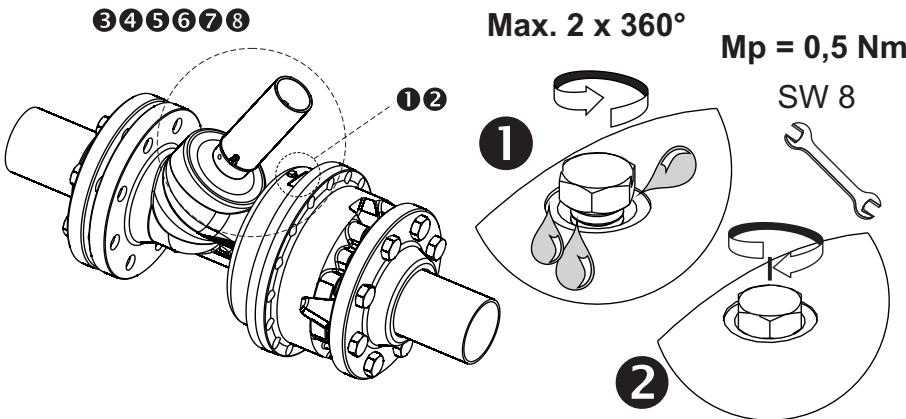
$p_1=4\text{bar}$   $p_2=3\text{bar}$   $\Delta p=1\text{bar}$   
 $\Delta p < > 1 \text{ bar} \Rightarrow \text{Flow} = \approx$



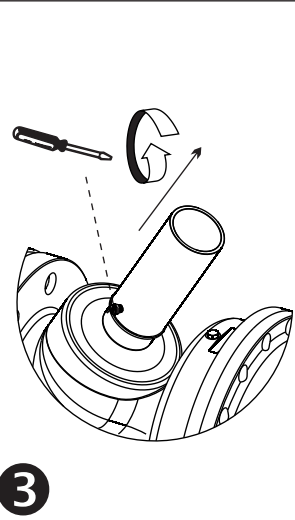
1



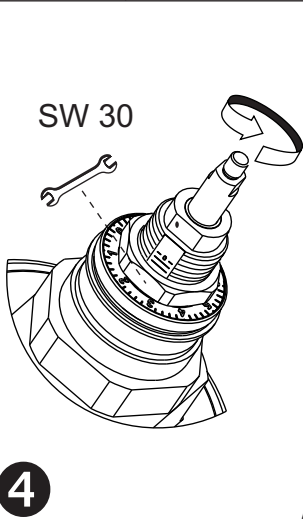
2



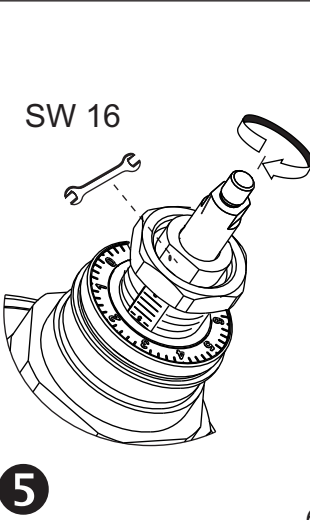
3



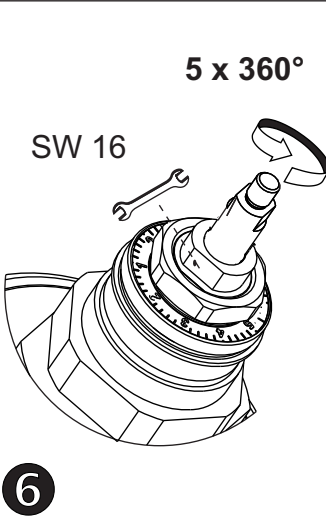
4



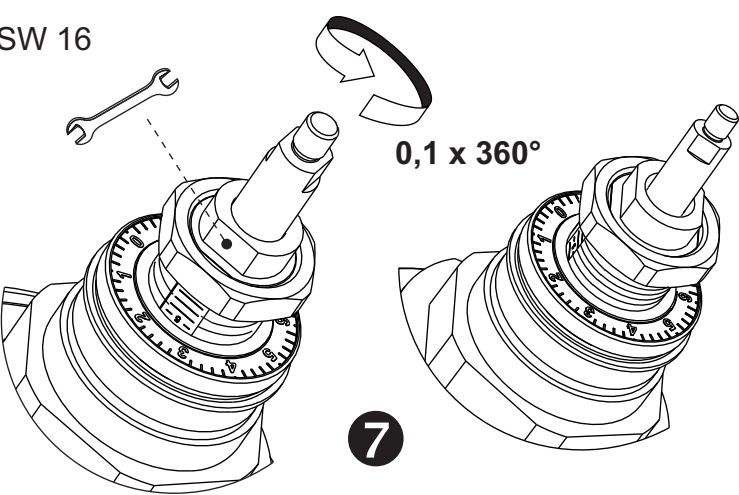
5



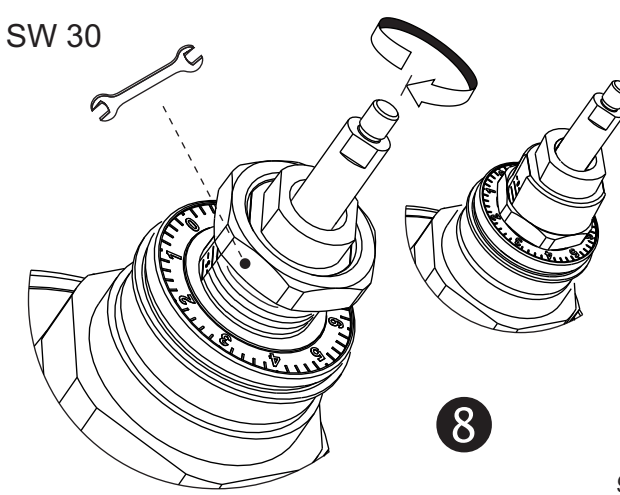
6



7



8

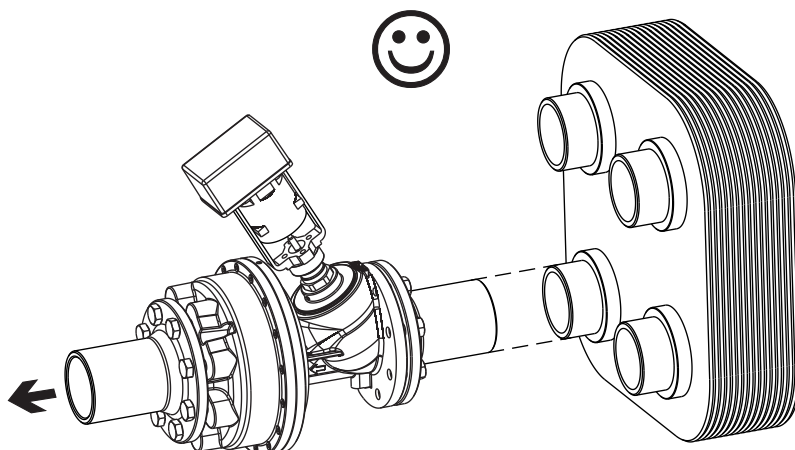


9

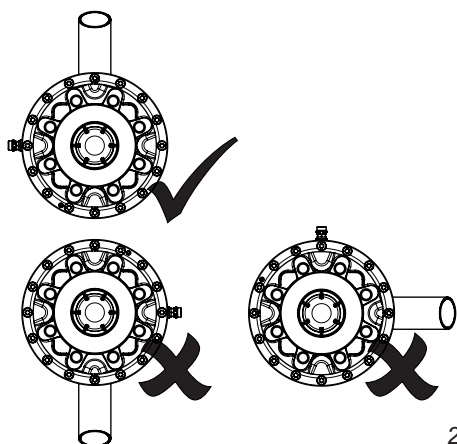
KTM 512 DN 80 HF											
Position - Einstellung											
	0,0	1,0	2,0	3,0	4,0	5,0	6,0	7,0	8,0	9,0	
,0	0,00	1,67	2,34	3,47	5,73	9,94	15,44	21,48	27,43	30,90	
,1	0,17	1,74	2,45	3,70	6,15	10,49	16,04	22,08	27,78	31,08	
,2	0,33	1,80	2,57	3,92	6,57	11,04	16,65	22,67	28,12	31,26	
,3	0,50	1,87	2,68	4,15	6,99	11,59	17,25	23,27	28,47	31,44	
,4	0,67	1,94	2,79	4,37	7,41	12,14	17,86	23,86	28,82	31,62	
,5	0,84	2,01	2,91	4,60	7,84	12,69	18,46	24,46	29,17	31,80	
,6	1,00	2,07	3,02	4,83	8,26	13,24	19,06	25,05	29,51	31,98	
,7	1,17	2,14	3,13	5,05	8,68	13,79	19,67	25,65	29,86	32,16	
,8	1,34	2,21	3,24	5,28	9,10	14,34	20,27	26,24	30,21	32,34	
,9	1,50	2,27	3,36	5,50	9,52	14,89	20,88	26,84	30,55	32,52	

Flow - Volumenstrom (m³/h)

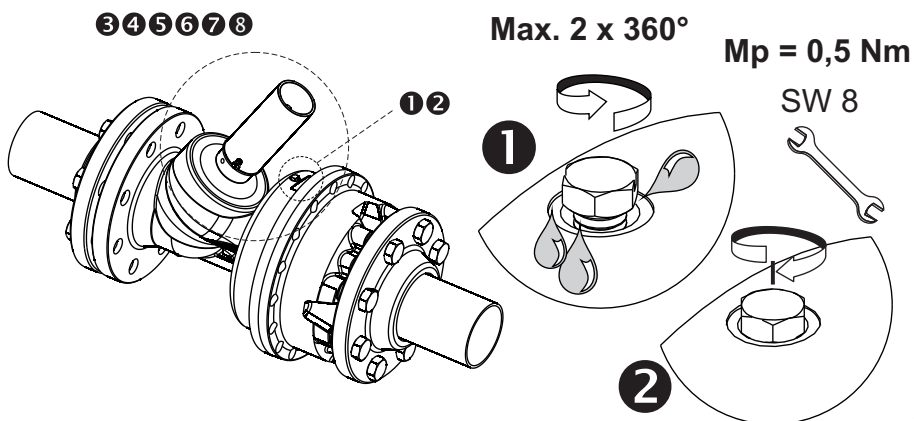
$p_1=4\text{bar}$   $p_2=3\text{bar}$   $\Delta p=1\text{bar}$   
 $\Delta p < > 1 \text{ bar} \Rightarrow \text{Flow} = \approx$



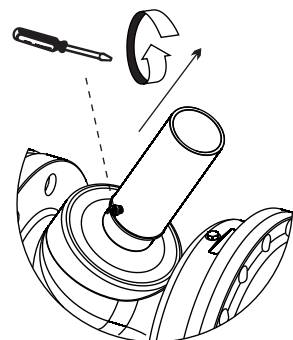
1



2

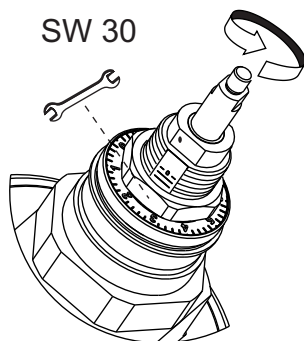


3



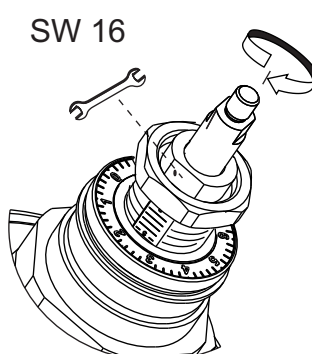
3

4



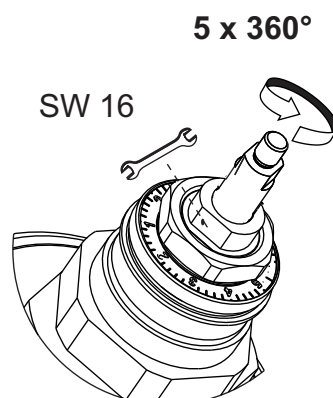
4

5



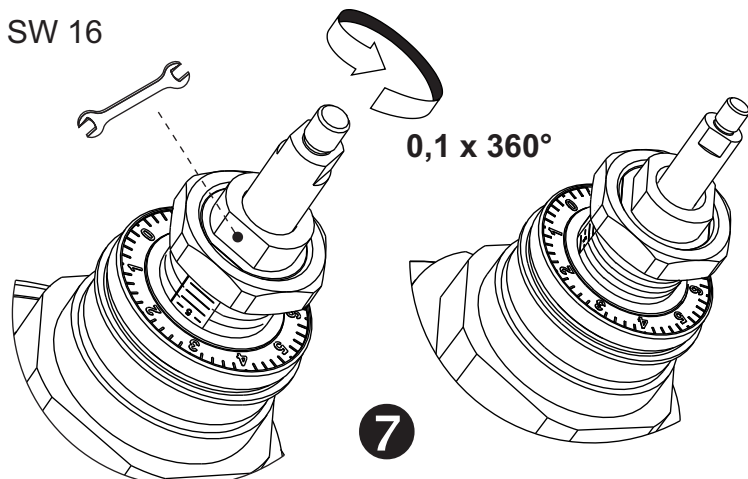
5

6



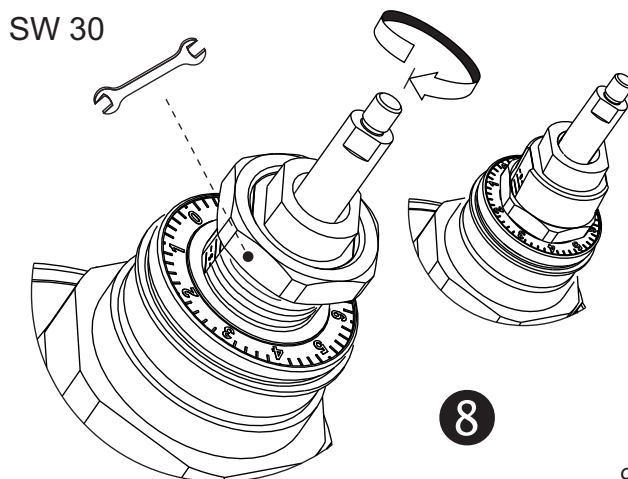
6

7



7

8

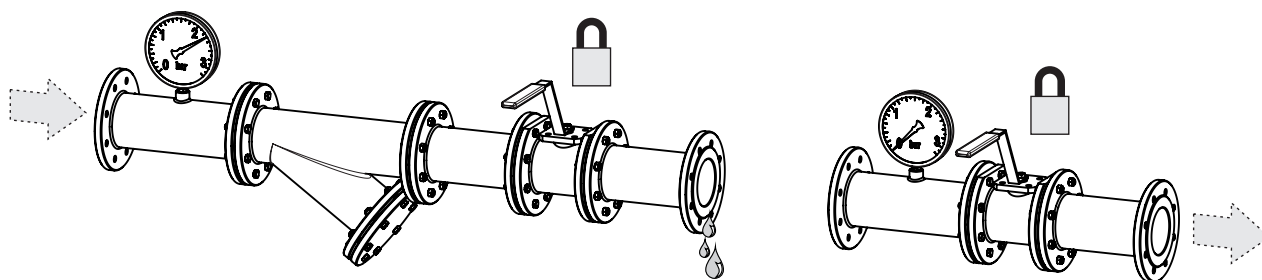
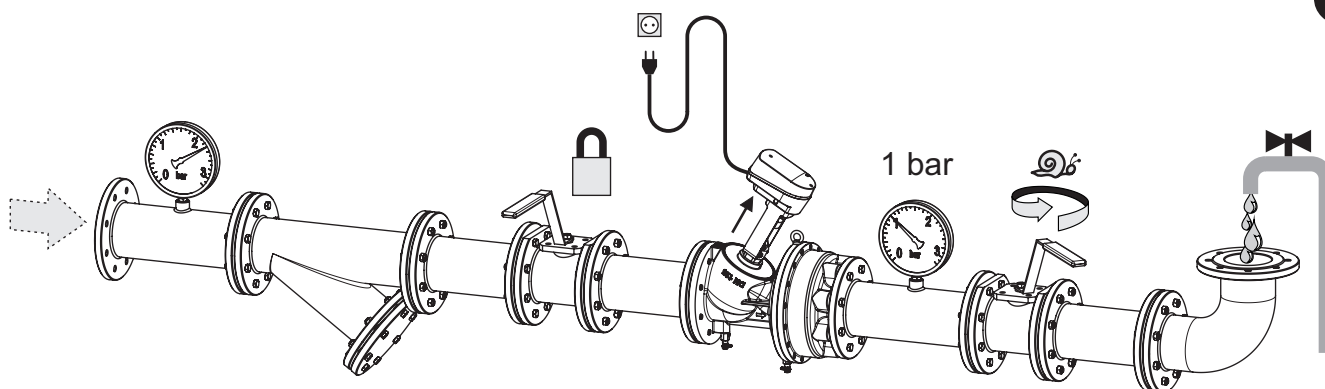
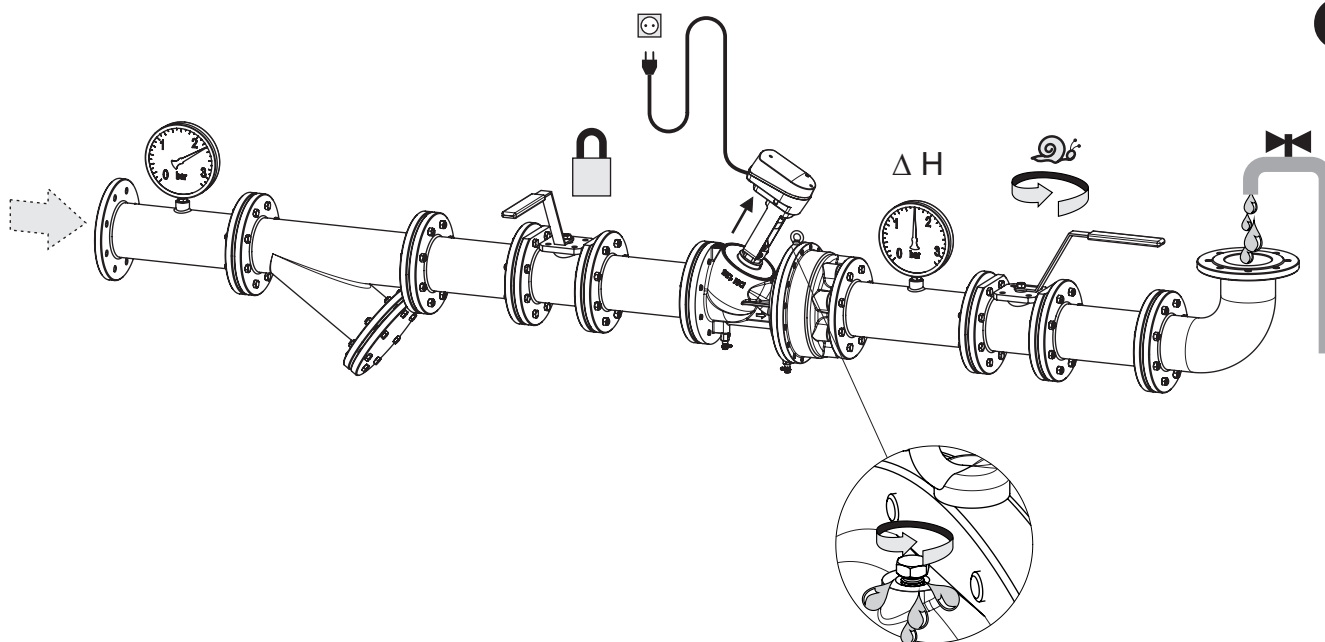


8

9

Approved by:

13237 - Navodilo (smeško) KTM 512 DN 80 HF by Alen Jerman 17.06.2016 - Rev. C

**1**

**2**

**3**

**4**
