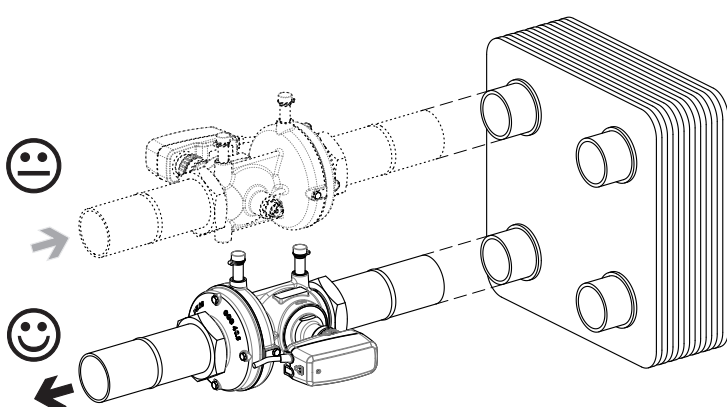
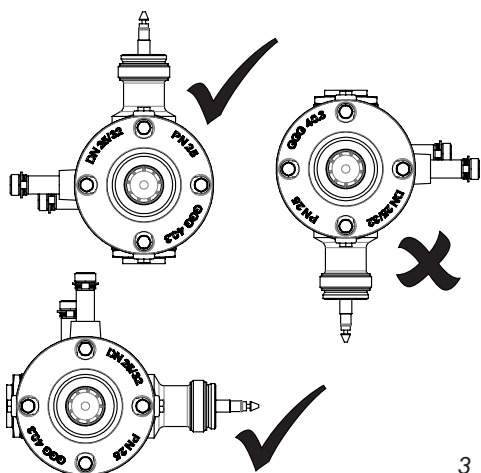


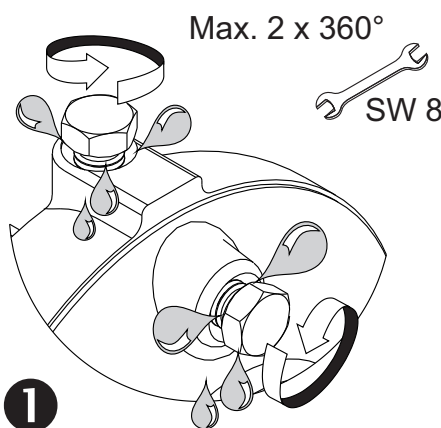
1



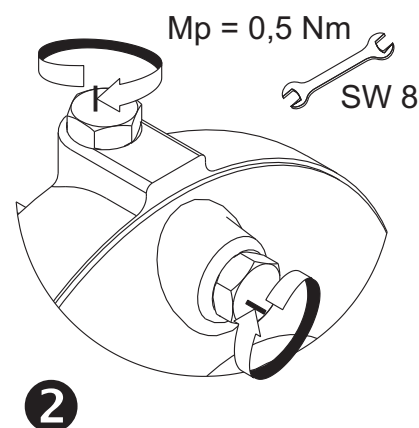
2



3

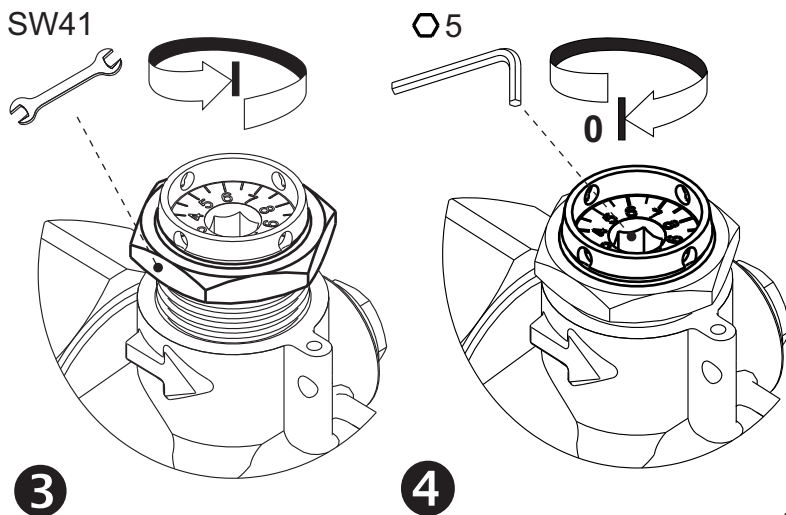


1



2

4



3

4

5

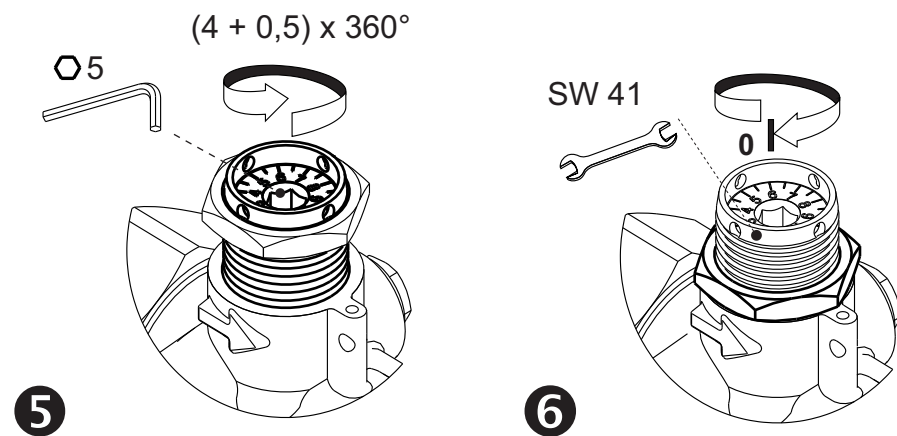
KTM 512 DN 25/32 LF Position - Einstellung							
	0,0	1,0	2,0	3,0	4,0	5,0	6,0
,0	0,01	0,46	1,10	2,02	2,44	2,81	3,02
,1	0,06	0,52	1,19	2,06	2,48	2,83	3,04
,2	0,10	0,59	1,28	2,10	2,51	2,85	3,05
,3	0,15	0,65	1,38	2,15	2,55	2,87	3,07
,4	0,19	0,72	1,47	2,19	2,59	2,89	3,08
,5	0,24	0,78	1,56	2,23	2,63	2,92	3,10
,6	0,28	0,84	1,65	2,27	2,66	2,94	3,11
,7	0,33	0,91	1,74	2,31	2,70	2,96	3,13
,8	0,37	0,97	1,84	2,36	2,74	2,98	3,14
,9	0,42	1,04	1,93	2,40	2,77	3,00	3,16

Flow - Volumenstrom (m³/h)

$p_1=4\text{bar}$   $p_2=3\text{bar}$   $\Delta p=1\text{bar}$   
 $\Delta p < > 1 \text{ bar} \Rightarrow \text{Flow} = \approx$

Approved by:

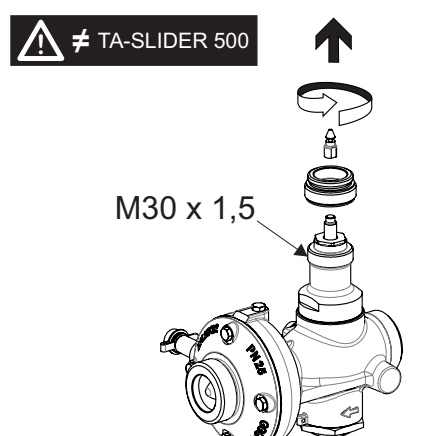
13161 - Navodilo (smeško) KTM 512 DN 25/32 LF by Alen Jerman 26.10.2021 - Rev. F



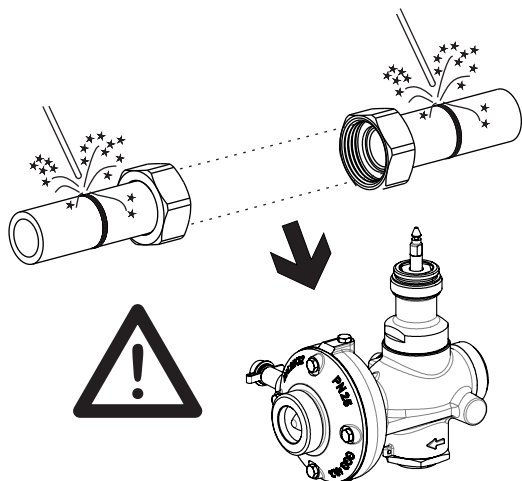
5

6

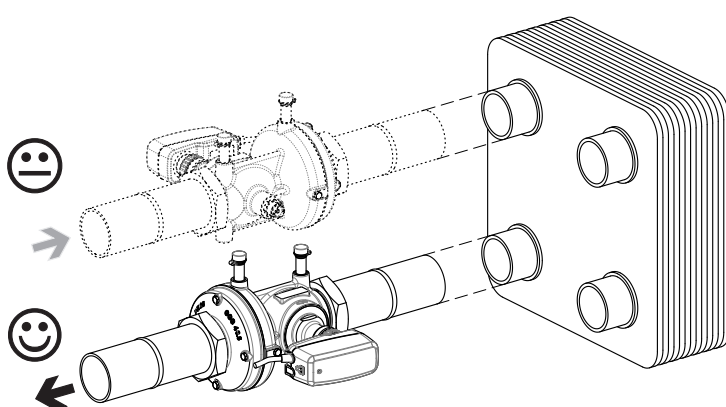
7



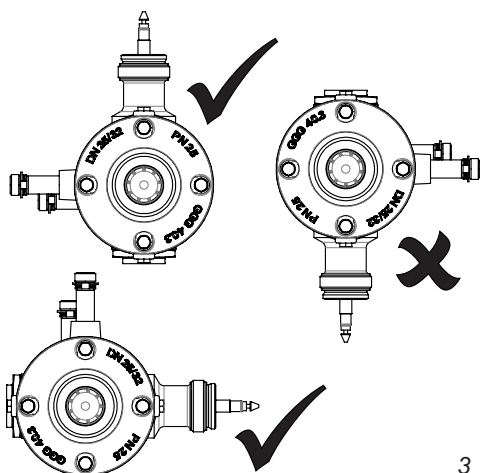
8



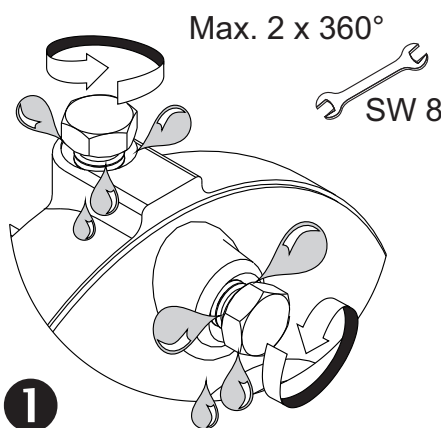
1



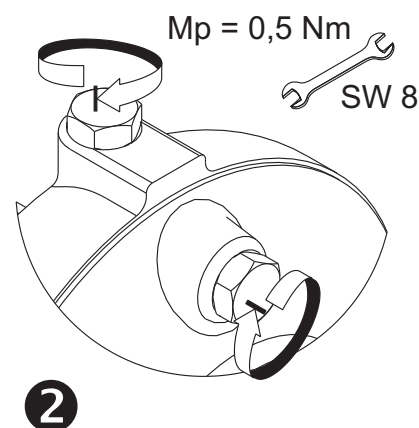
2



3

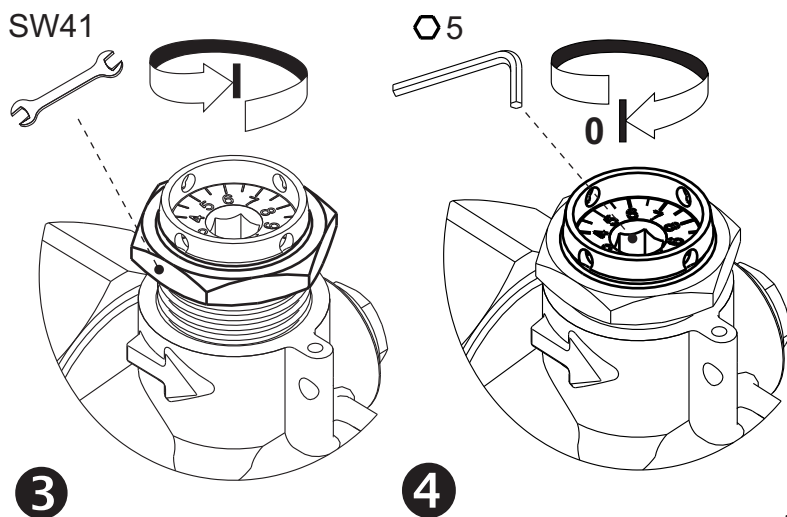


1



2

4



3

4

5

KTM 512 DN 25/32 NF Position - Einstellung							
	0,0	1,0	2,0	3,0	4,0	5,0	6,0
,0	0,04	0,65	1,56	2,74	3,26	3,59	3,72
,1	0,10	0,74	1,68	2,79	3,29	3,60	3,73
,2	0,16	0,83	1,80	2,84	3,33	3,62	3,74
,3	0,22	0,92	1,91	2,90	3,36	3,63	3,74
,4	0,28	1,01	2,03	2,95	3,39	3,64	3,75
,5	0,35	1,11	2,15	3,00	3,43	3,66	3,76
,6	0,41	1,20	2,27	3,05	3,46	3,67	3,77
,7	0,47	1,29	2,39	3,10	3,49	3,68	3,78
,8	0,53	1,38	2,50	3,16	3,52	3,69	3,78
,9	0,59	1,47	2,62	3,21	3,56	3,71	3,79

Flow - Volumenstrom (m³/h)

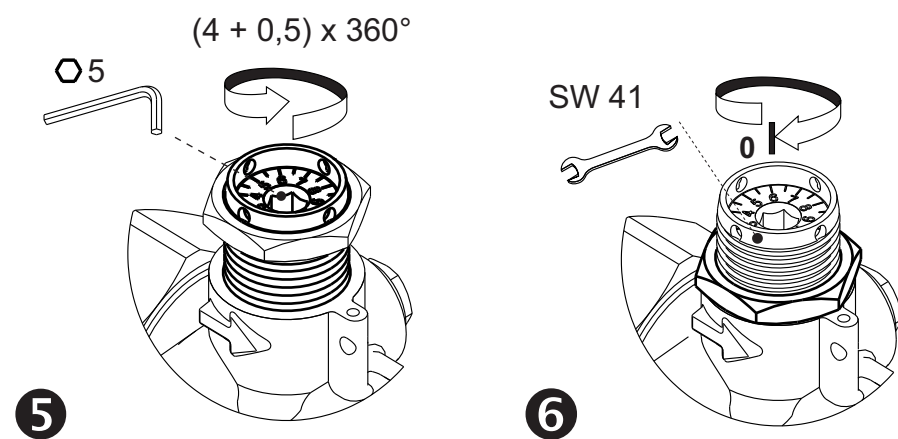
$p_1=4\text{bar}$   $p_2=3\text{bar}$   $\Delta p=1\text{bar}$   
 $\Delta p < > 1 \text{ bar} \Rightarrow \text{Flow} = \approx$

Approved by:

13162 - Navodilo (smeško) KTM 512 DN 25/32 NF by Alen Jerman 26.10.2021 - Rev. F

$p_1=4\text{bar}$   $p_2=3\text{bar}$   $\Delta p=1\text{bar}$   
 $\Delta p < > 1 \text{ bar} \Rightarrow \text{Flow} = \approx$

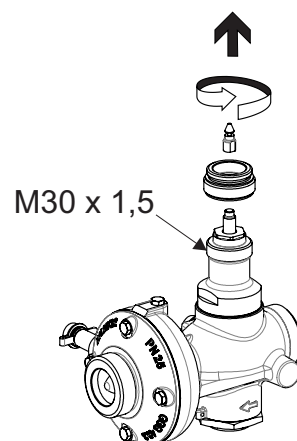
6



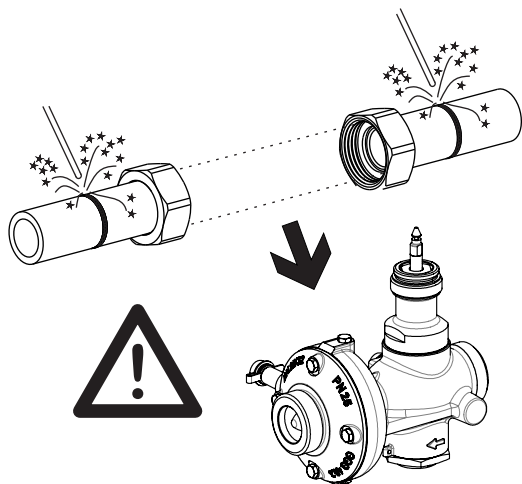
5

6

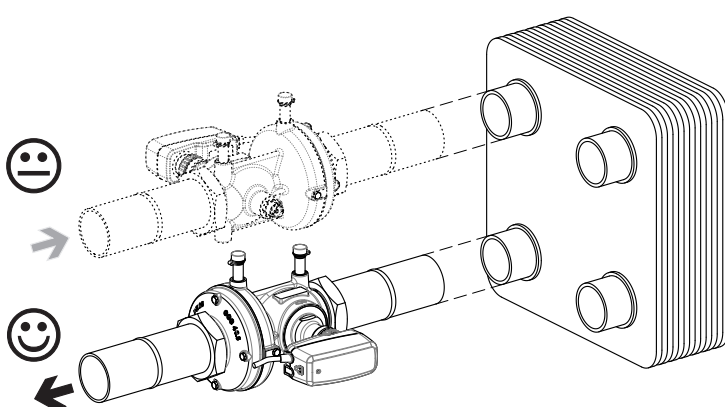
7



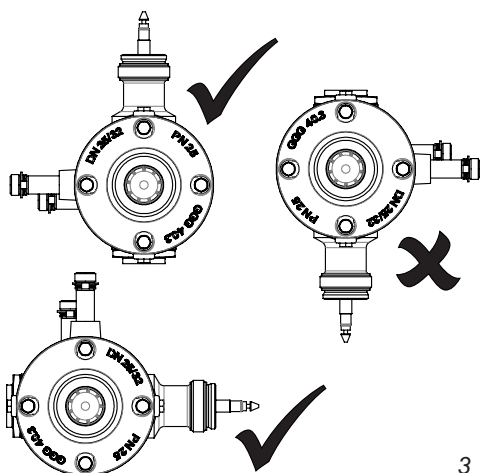
8



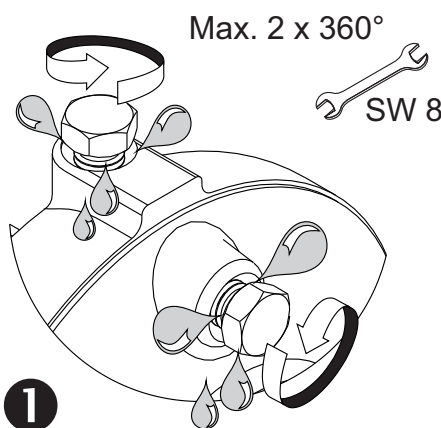
1



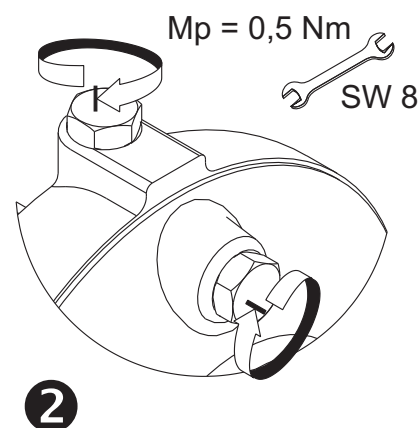
2



3

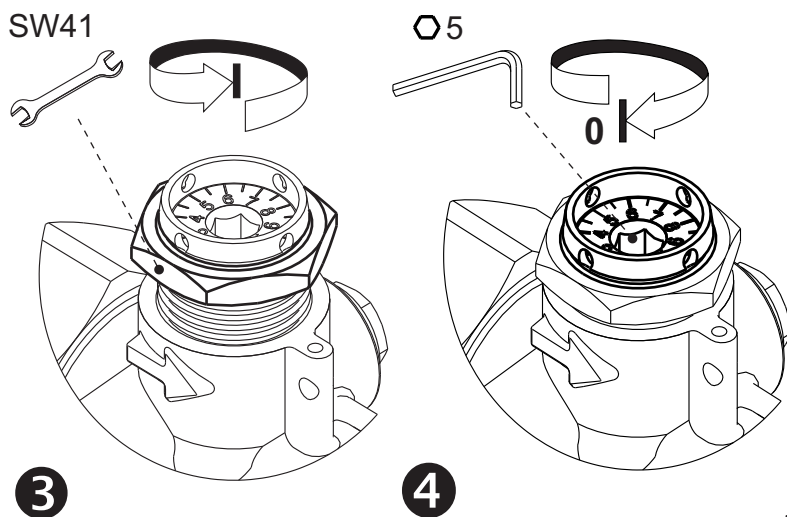


1



2

4



3

4

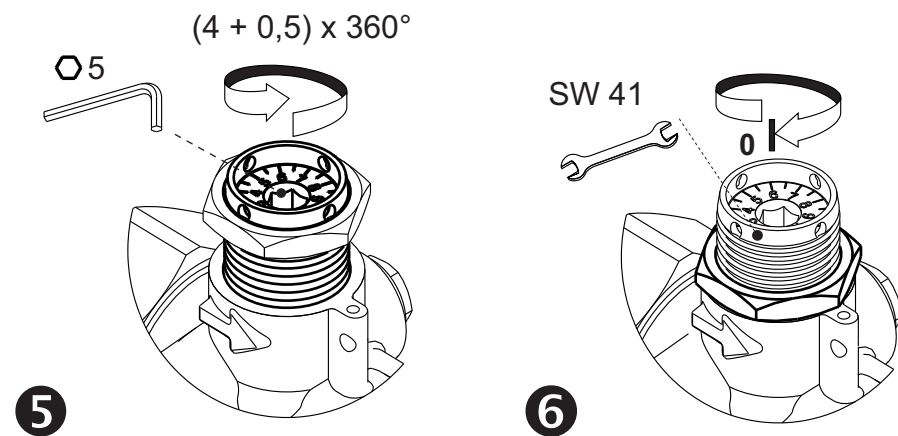
5

KTM 512 DN 25/32 HF Position - Einstellung							
	0,0	1,0	2,0	3,0	4,0	5,0	6,0
,0	0,05	0,81	1,96	3,52	4,23	4,88	5,22
,1	0,13	0,93	2,12	3,59	4,30	4,91	5,24
,2	0,20	1,04	2,27	3,66	4,36	4,95	5,26
,3	0,28	1,16	2,43	3,73	4,43	4,98	5,28
,4	0,35	1,27	2,58	3,80	4,49	5,02	5,30
,5	0,43	1,39	2,74	3,88	4,56	5,05	5,32
,6	0,51	1,50	2,90	3,95	4,62	5,08	5,34
,7	0,58	1,62	3,05	4,02	4,69	5,12	5,36
,8	0,66	1,73	3,21	4,09	4,75	5,15	5,38
,9	0,73	1,85	3,36	4,16	4,82	5,19	5,40

Flow - Volumenstrom (m³/h)

$p_1=4\text{bar}$   $p_2=3\text{bar}$   $\Delta p=1\text{bar}$   
 $\Delta p < > 1 \text{ bar} \Rightarrow \text{Flow} = \approx$

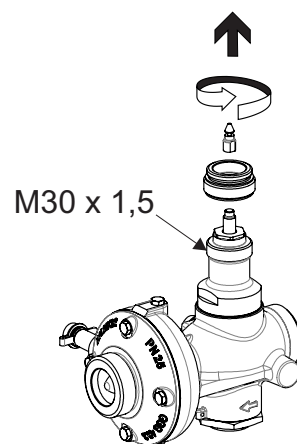
6



5

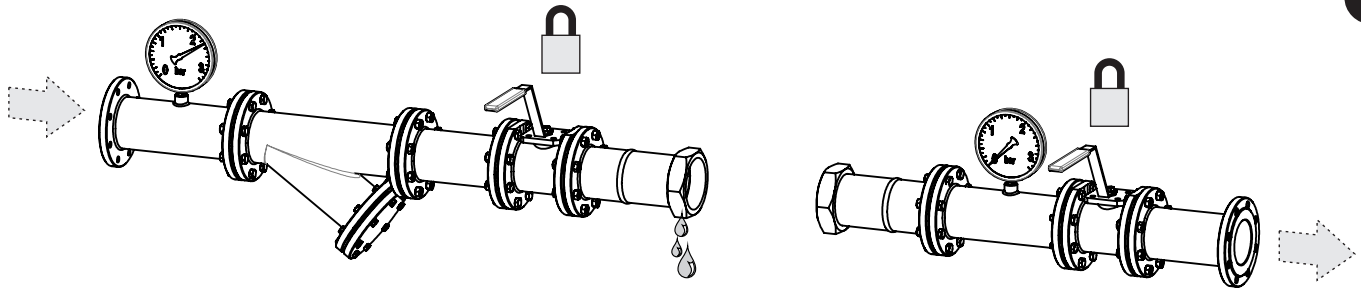
6

7

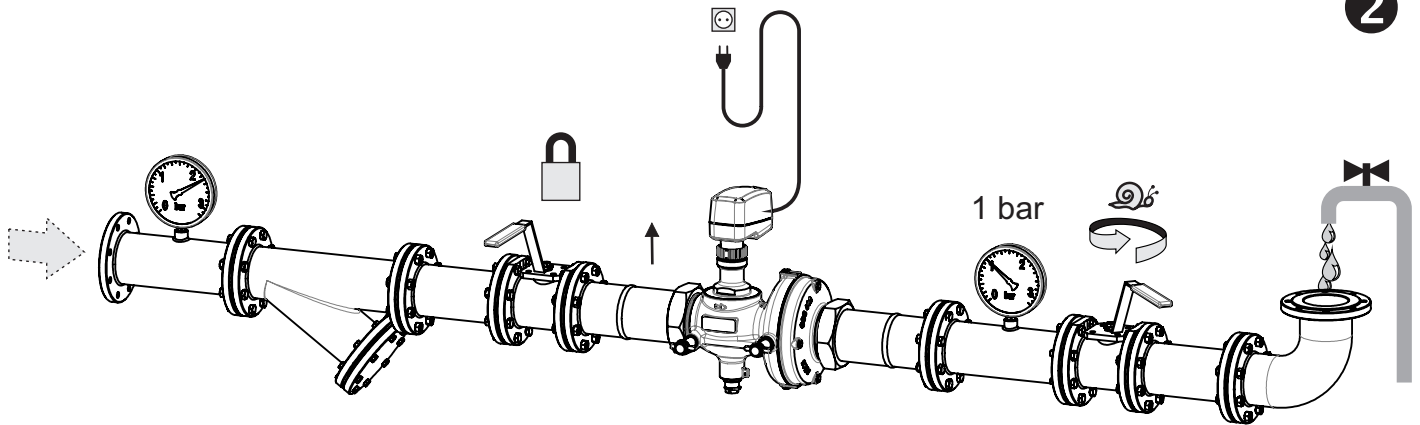


8

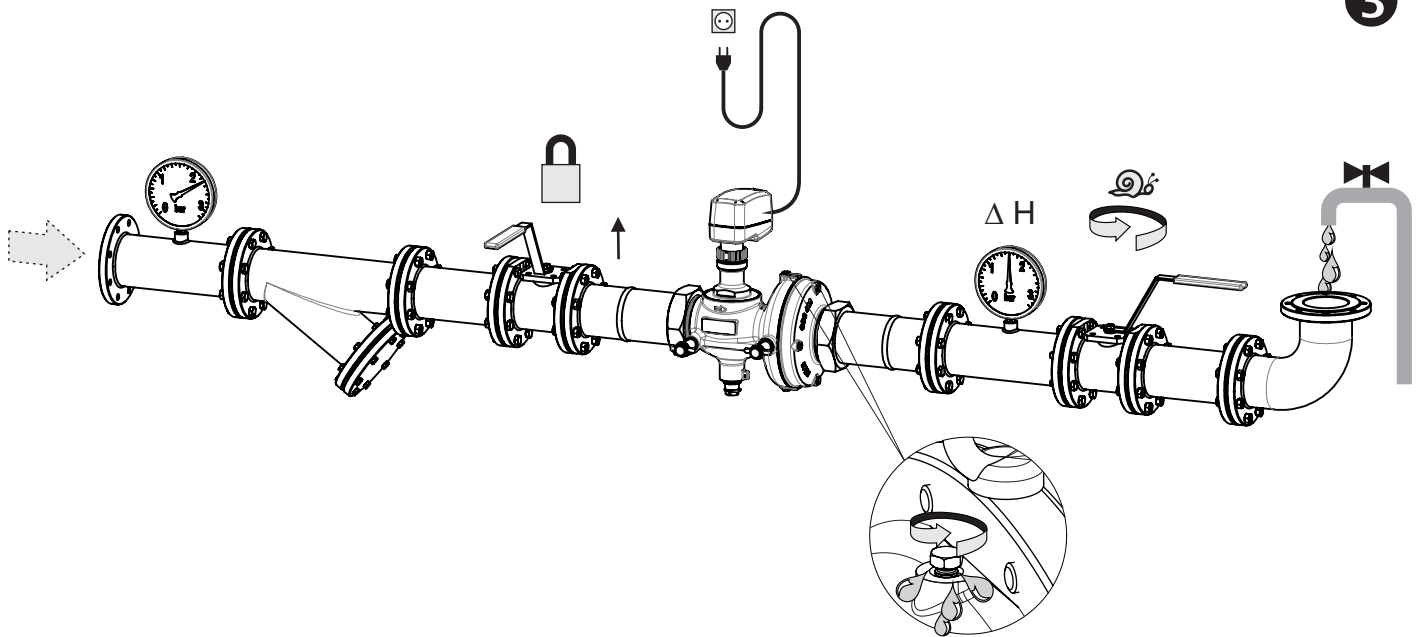
1



2



3



4

