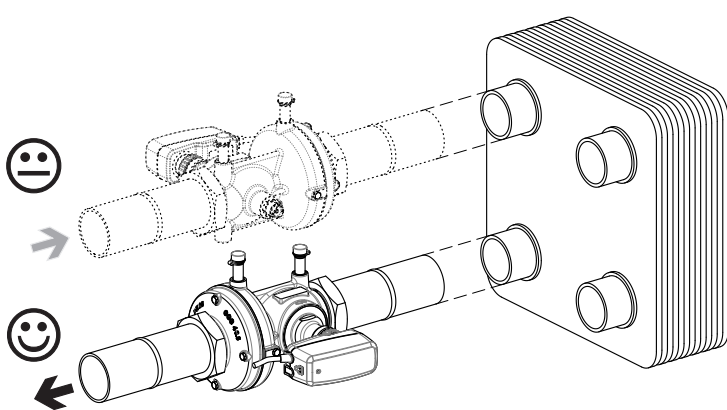
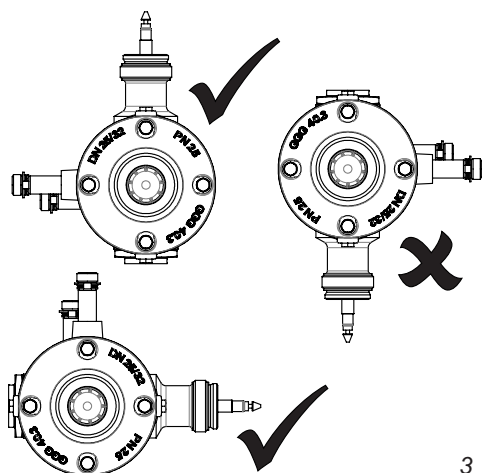


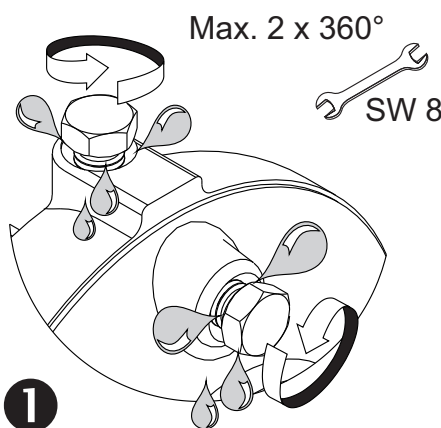
1



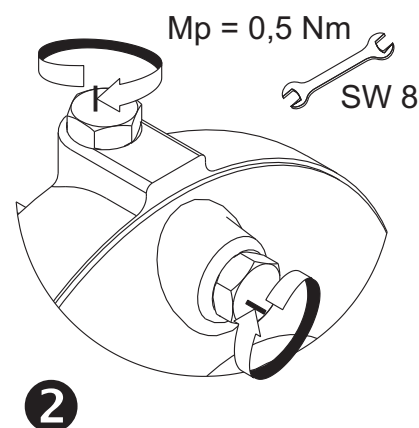
2



3

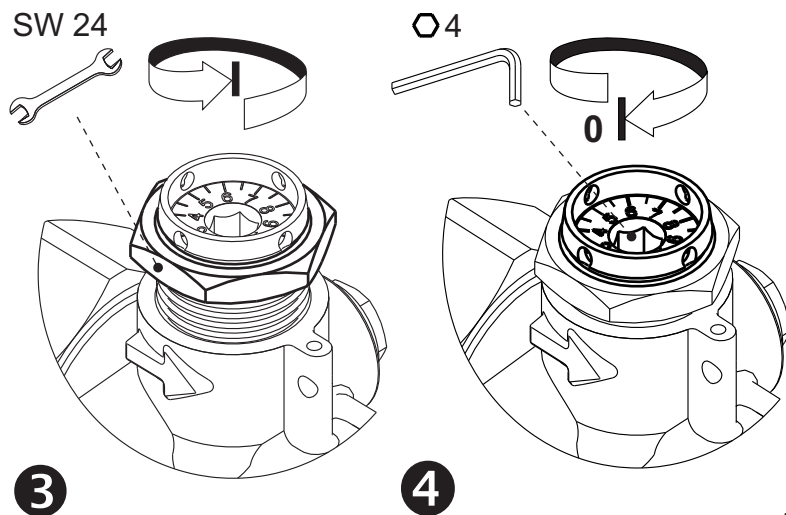


1



2

4



3

4

5

KTM 512 DN 15/20 LF
Position - Einstellung

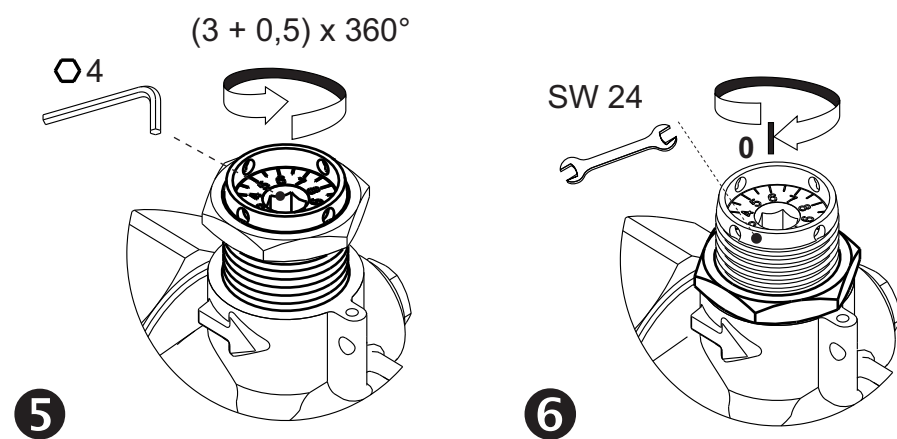
	0,0	1,0	2,0	3,0	4,0
,0	0,02	0,29	0,49	0,59	0,72
,1	0,05	0,31	0,50	0,60	0,73
,2	0,07	0,33	0,51	0,62	0,74
,3	0,10	0,35	0,52	0,63	0,75
,4	0,13	0,37	0,53	0,64	0,76
,5	0,16	0,39	0,54	0,66	0,78
,6	0,18	0,41	0,55	0,67	0,79
,7	0,21	0,43	0,56	0,68	0,80
,8	0,24	0,45	0,57	0,69	0,81
,9	0,26	0,47	0,58	0,71	0,82

Flow - Volumenstrom (m³/h)

$p_1=4\text{bar}$ $p_2=3\text{bar}$ $\Delta p=1\text{bar}$
 $\Delta p < > 1 \text{ bar} \Rightarrow \text{Flow} = \approx$

Approved by:

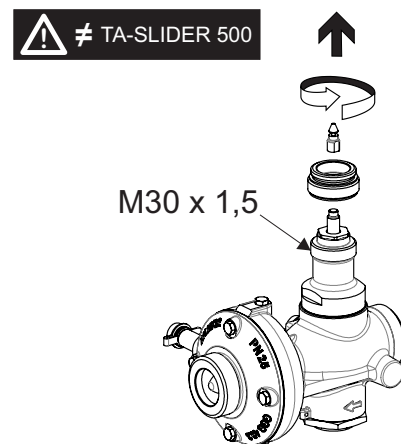
13020 - Navodilo (smeško) KTM 512 DN 15/20 LF by Alen Jerman 26.10.2021 - Rev. E



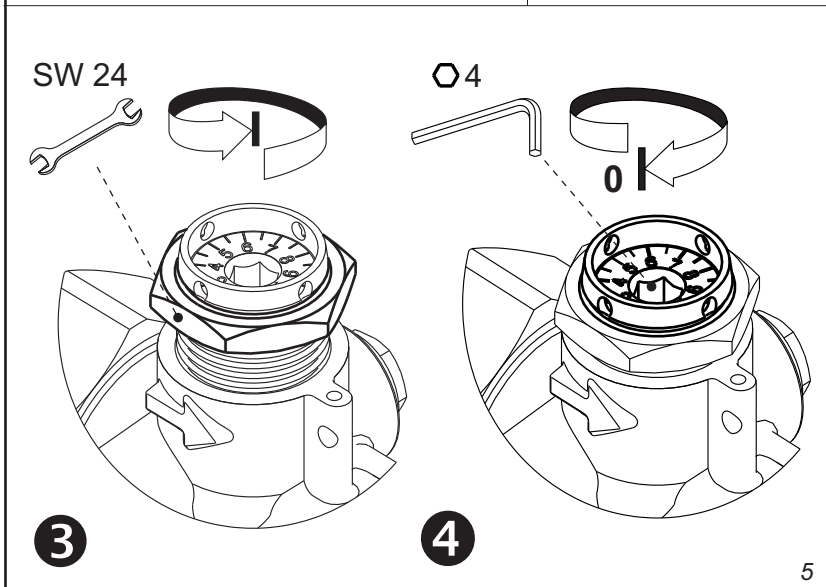
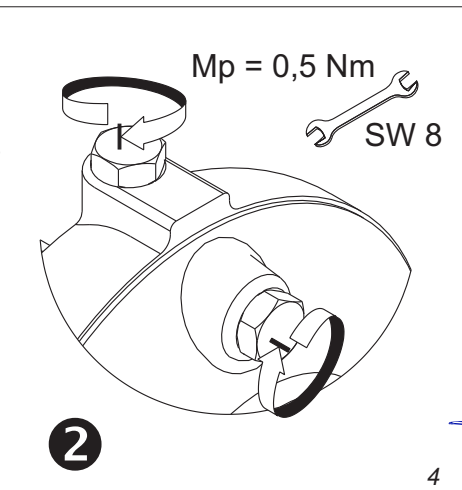
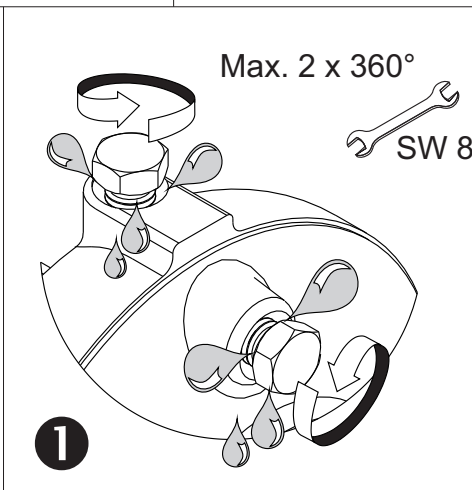
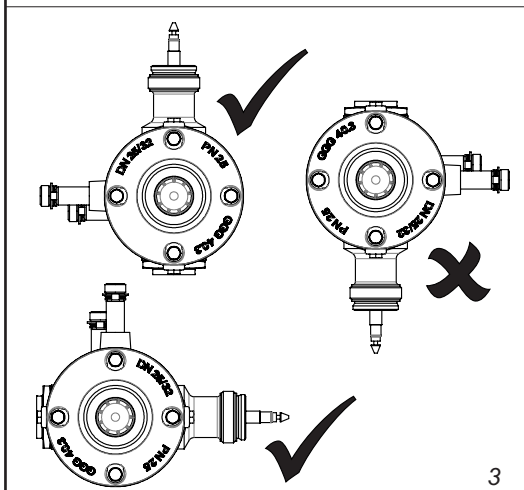
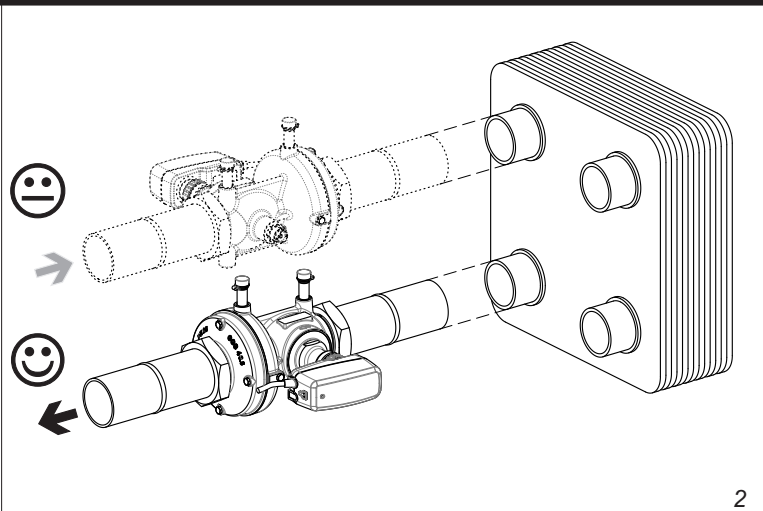
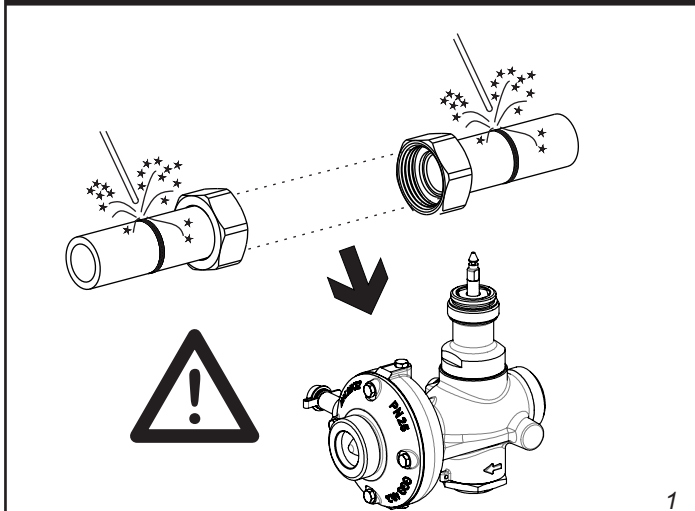
5

6

7



8

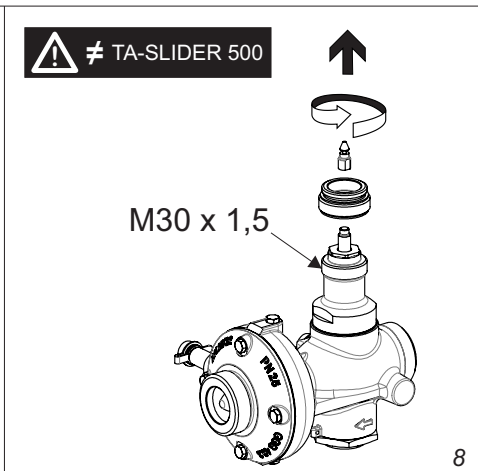
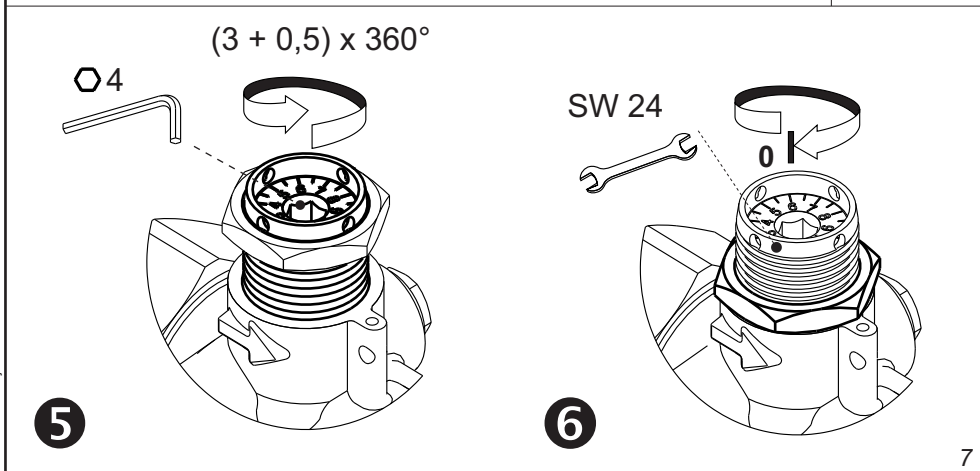


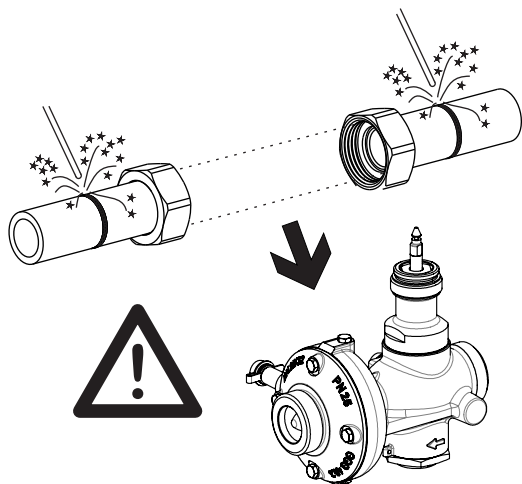
KTM 512 DN 15/20 NF
Position - Einstellung

	0,0	1,0	2,0	3,0	4,0
,0	0,03	0,41	0,61	0,73	0,89
,1	0,07	0,43	0,62	0,75	0,90
,2	0,11	0,45	0,63	0,76	0,91
,3	0,14	0,47	0,65	0,78	0,93
,4	0,18	0,49	0,66	0,79	0,94
,5	0,22	0,51	0,67	0,81	0,95
,6	0,26	0,53	0,68	0,83	0,96
,7	0,30	0,55	0,69	0,84	0,97
,8	0,33	0,57	0,71	0,86	0,99
,9	0,37	0,59	0,72	0,87	1,00

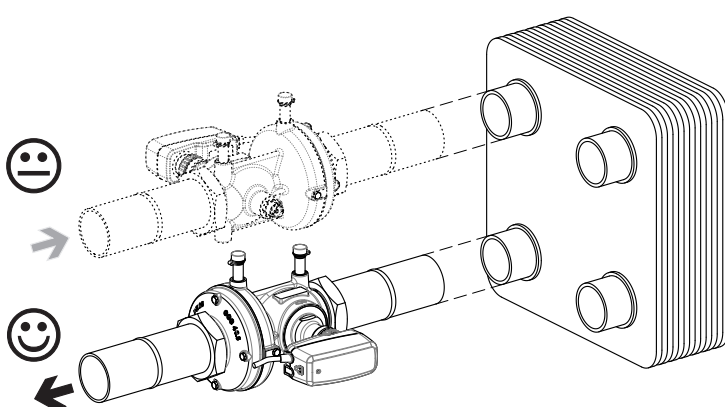
Flow - Volumenstrom (m³/h)

⊗ p₁=4bar p₂=3bar Δp=1bar
Δp <> 1 bar ⇒ Flow = ≈

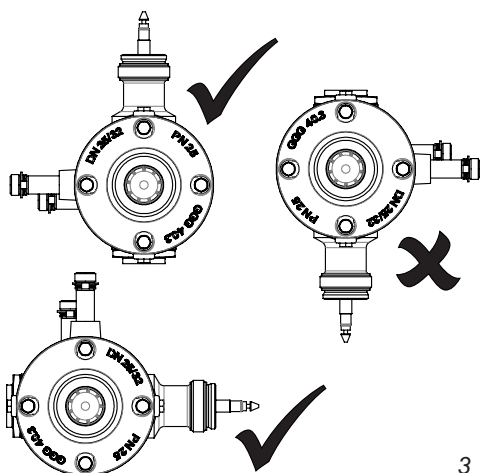




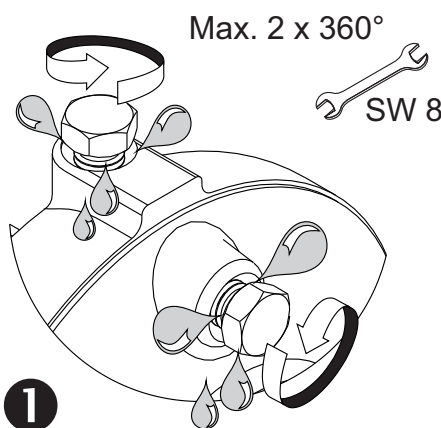
1



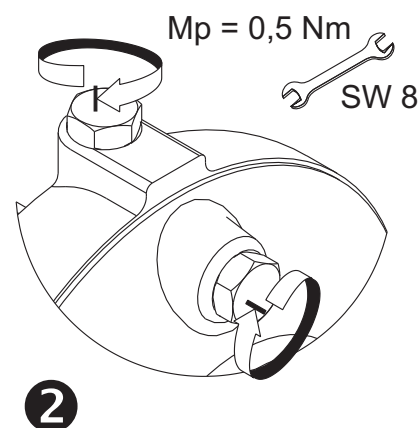
2



3

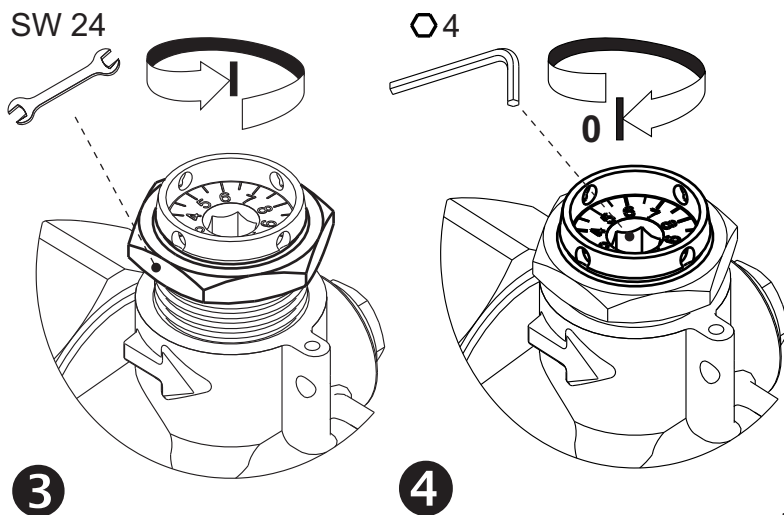


1



2

4



3

4

5

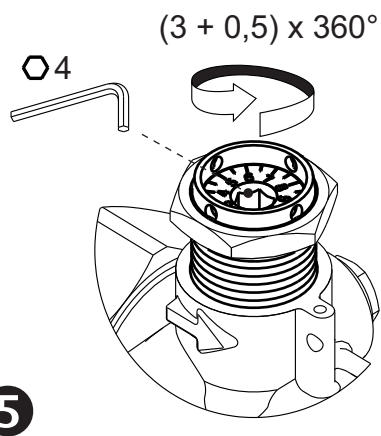
KTM 512 DN 15/20 HF Position - Einstellung					
	0,0	1,0	2,0	3,0	4,0
,0	0,10	0,62	0,86	1,03	1,25
,1	0,15	0,64	0,88	1,05	1,27
,2	0,20	0,67	0,89	1,07	1,28
,3	0,26	0,69	0,91	1,10	1,30
,4	0,31	0,72	0,93	1,12	1,31
,5	0,36	0,74	0,95	1,14	1,33
,6	0,41	0,76	0,96	1,16	1,34
,7	0,46	0,79	0,98	1,18	1,36
,8	0,52	0,81	1,00	1,21	1,37
,9	0,57	0,84	1,01	1,23	1,39

Flow - Volumenstrom (m³/h)

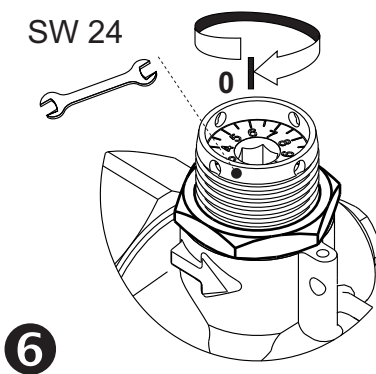
$p_1=4\text{bar}$ $p_2=3\text{bar}$ $\Delta p=1\text{bar}$
 $\Delta p < > 1 \text{ bar} \Rightarrow \text{Flow} = \approx$

Approved by:

13148 - Navodilo (smeško) KTM 512 DN 15/20 HF by Alen Jerman 26.10.2021 - Rev. E

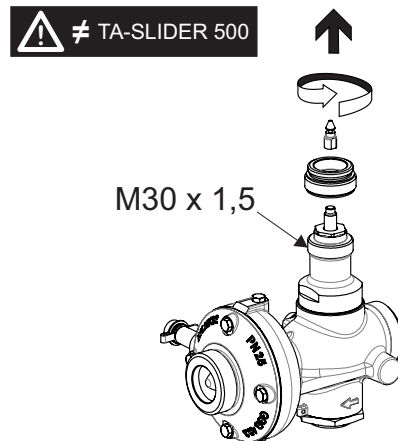


5

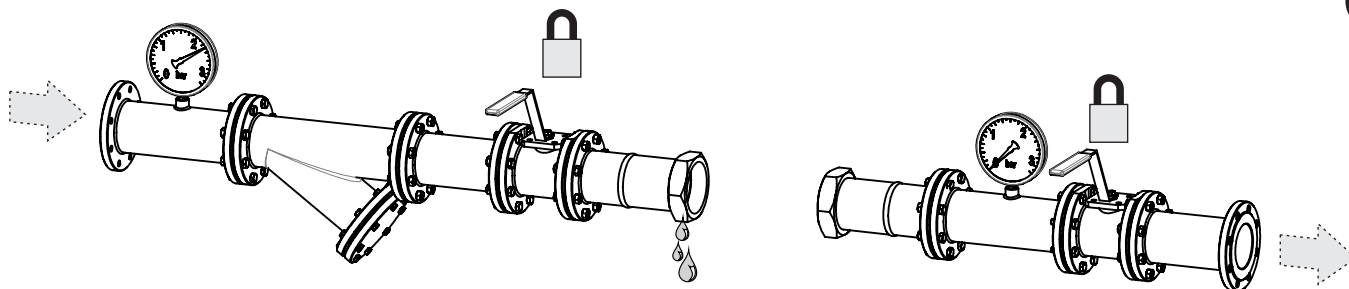
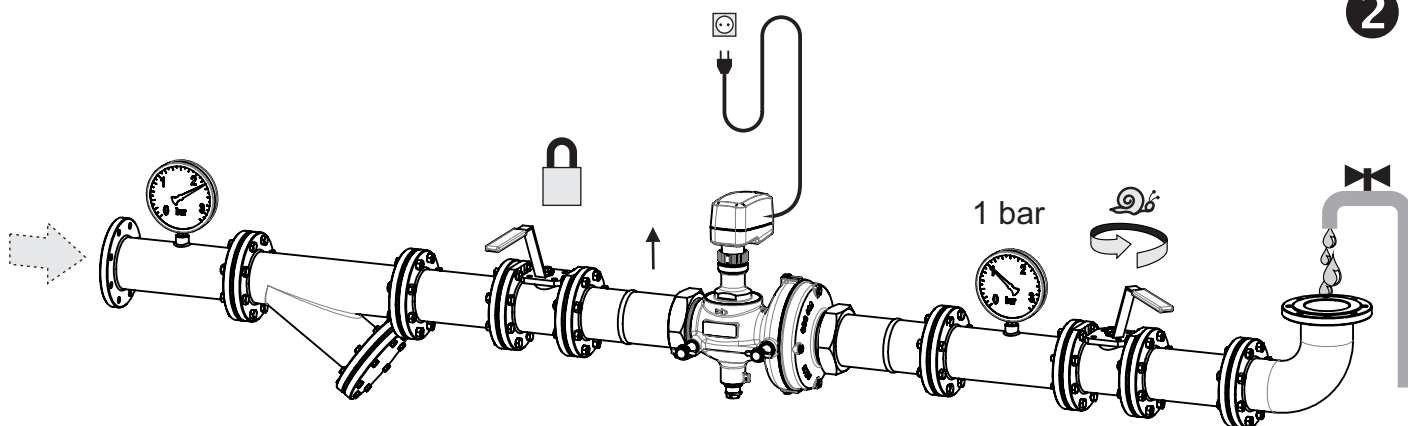
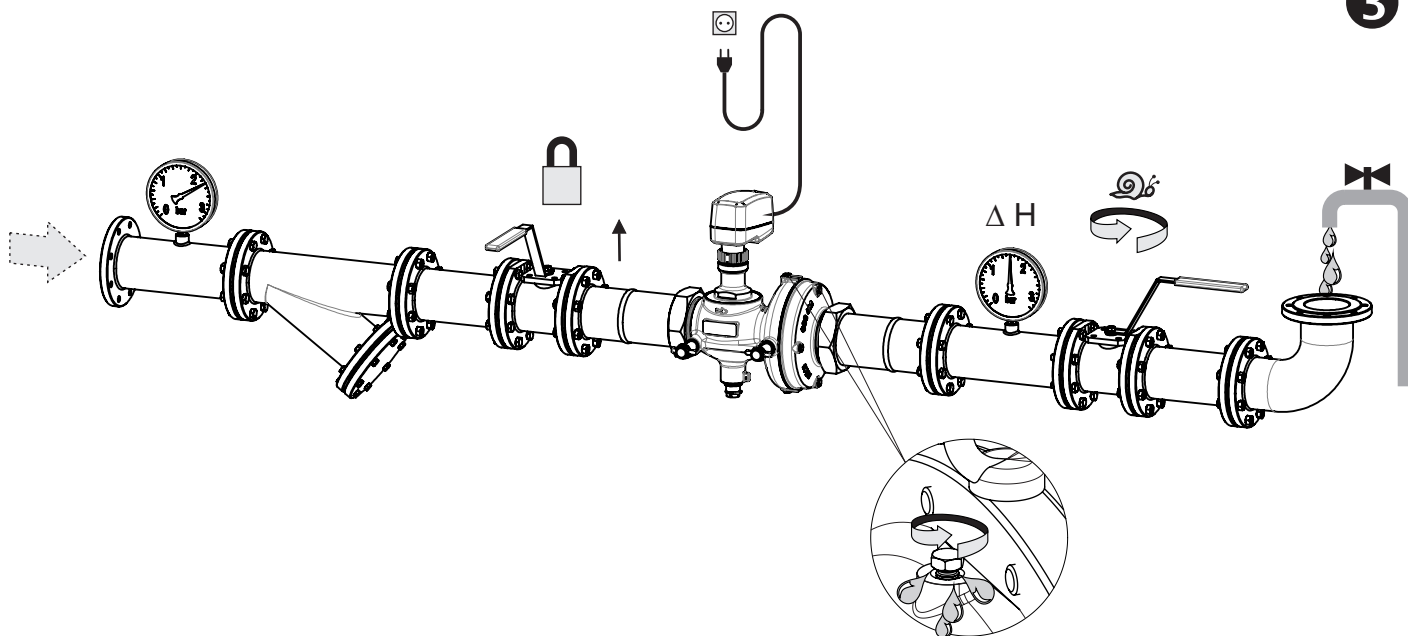


6

7



8

1

2

3

4
