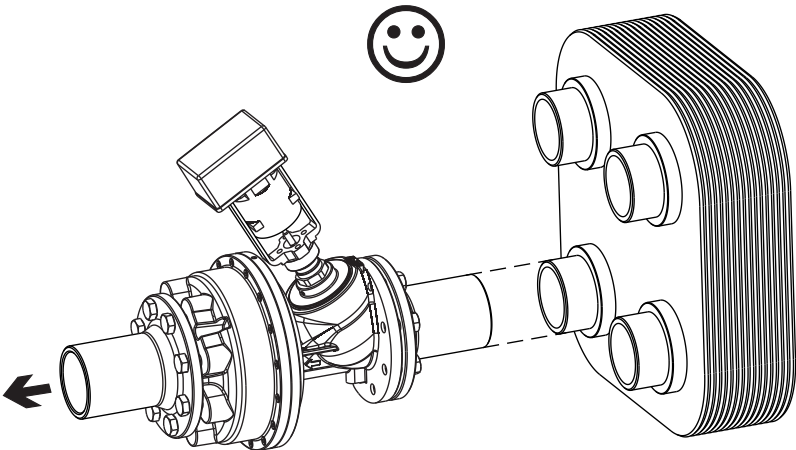


KTM 512 DN 125 LF

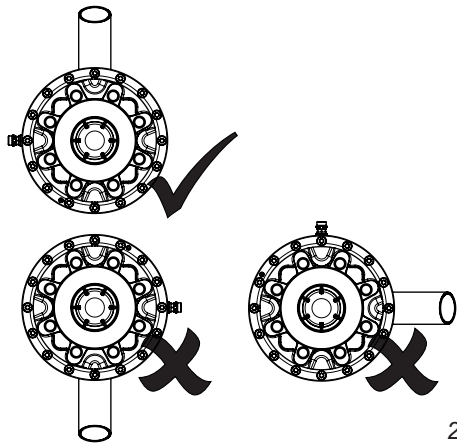


KTM 512 DN 125 LF											
Position - Einstellung											
	0,0	1,0	2,0	3,0	4,0	5,0	6,0	7,0	8,0	9,0	
,0	0,00	2,75	5,87	9,91	14,61	19,21	23,75	27,51	31,07	33,66	
,1	0,28	3,06	6,27	10,38	15,07	19,66	24,13	27,87	31,33	33,87	
,2	0,55	3,37	6,68	10,85	15,53	20,12	24,50	28,22	31,59	34,08	
,3	0,83	3,69	7,08	11,32	15,99	20,57	24,88	28,58	31,85	34,30	
,4	1,10	4,00	7,49	11,79	16,45	21,03	25,25	28,93	32,11	34,51	
,5	1,38	4,31	7,89	12,26	16,91	21,48	25,63	29,29	32,37	34,72	
,6	1,65	4,62	8,29	12,73	17,37	21,93	26,01	29,65	32,62	34,93	
,7	1,93	4,93	8,70	13,20	17,83	22,39	26,38	30,00	32,88	35,14	
,8	2,20	5,25	9,10	13,67	18,29	22,84	26,76	30,36	33,14	35,36	
,9	2,48	5,56	9,51	14,14	18,75	23,30	27,13	30,71	33,40	35,57	
Flow - Volumenstrom (m³/h)											

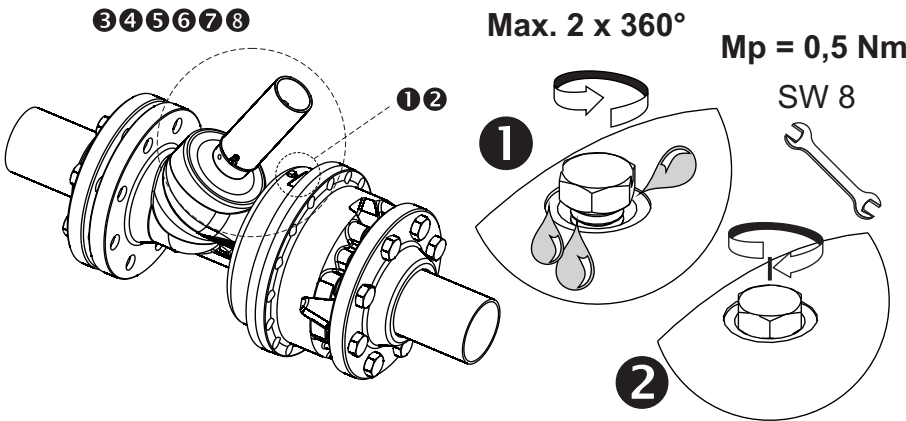
$p_1=4\text{bar}$ $p_2=3\text{bar}$ $\Delta p=1\text{bar}$
 $\Delta p < > 1 \text{ bar} \Rightarrow \text{Flow} = \approx$



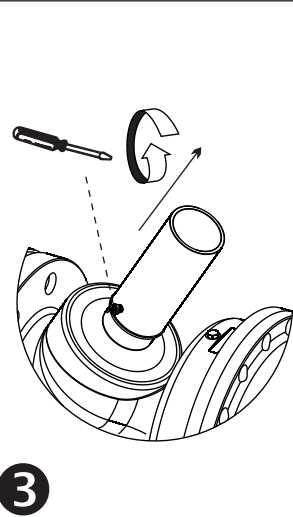
1



2

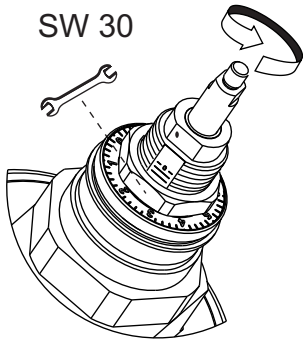


3



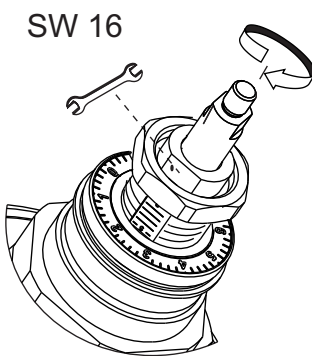
3

4



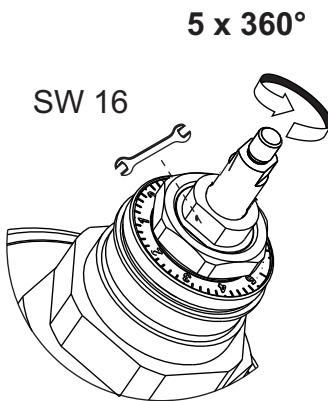
4

5



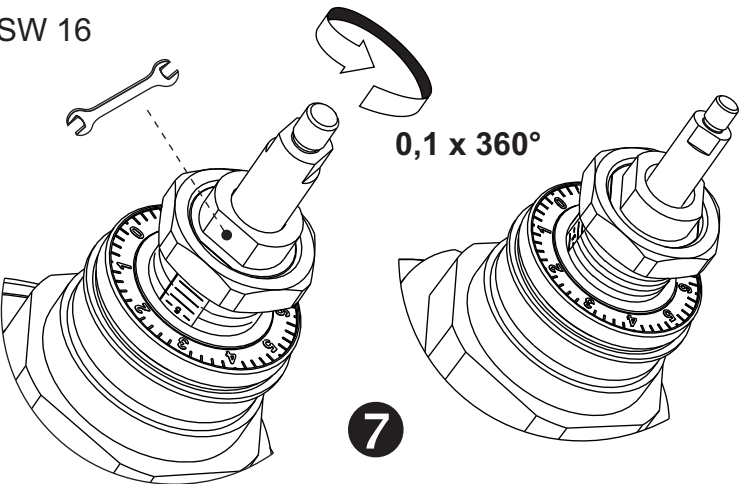
5

6



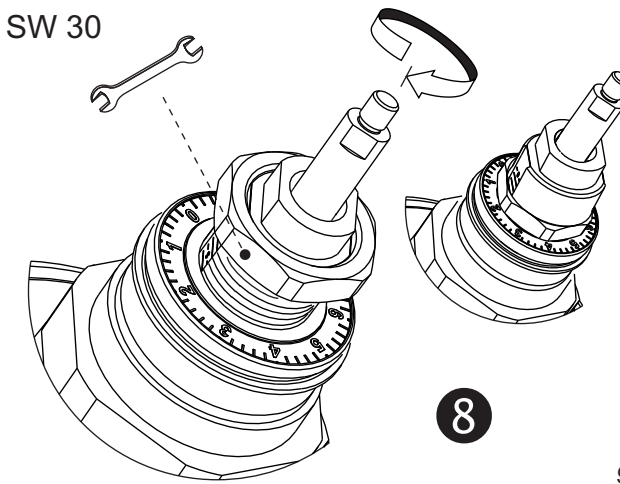
6

7



7

8



8

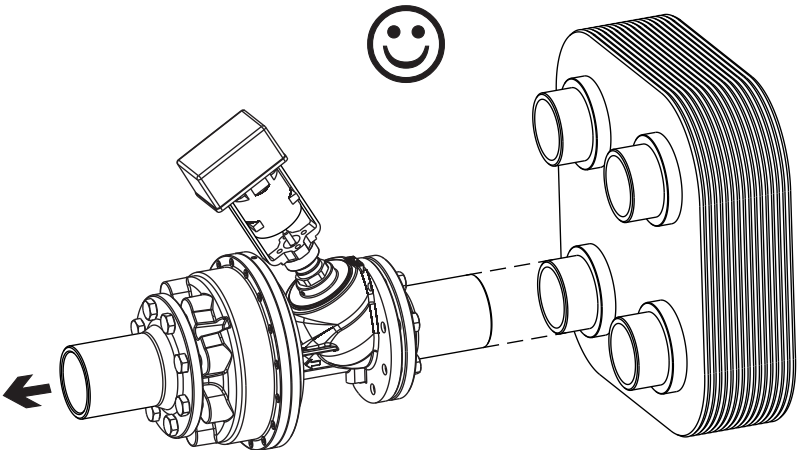
9

1

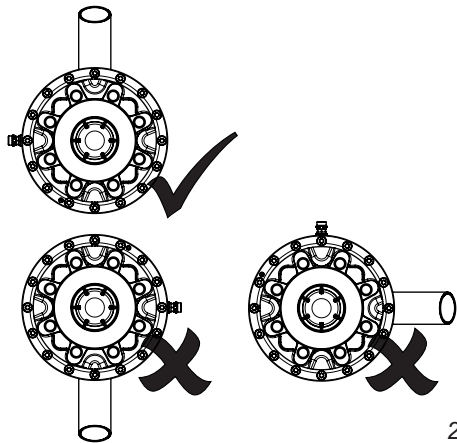


KTM 512 DN 125 HF											
Position - Einstellung											
	0,0	1,0	2,0	3,0	4,0	5,0	6,0	7,0	8,0	9,0	
,0	0,00	5,57	10,69	18,39	27,13	36,37	44,76	52,18	58,28	63,13	
,1	0,56	6,08	11,46	19,26	28,05	37,21	45,50	52,79	58,77	63,54	
,2	1,11	6,59	12,23	20,14	28,98	38,05	46,24	53,40	59,25	63,95	
,3	1,67	7,11	13,00	21,01	29,90	38,89	46,99	54,01	59,74	64,37	
,4	2,23	7,62	13,77	21,89	30,83	39,73	47,73	54,62	60,22	64,78	
,5	2,79	8,13	14,54	22,76	31,75	40,57	48,47	55,23	60,71	65,19	
,6	3,34	8,64	15,31	23,63	32,67	41,40	49,21	55,84	61,19	65,60	
,7	3,90	9,15	16,08	24,51	33,60	42,24	49,95	56,45	61,68	66,01	
,8	4,46	9,67	16,85	25,38	34,52	43,08	50,70	57,06	62,16	66,43	
,9	5,01	10,18	17,62	26,26	35,45	43,92	51,44	57,67	62,65	66,84	
Flow - Volumenstrom (m³/h)											

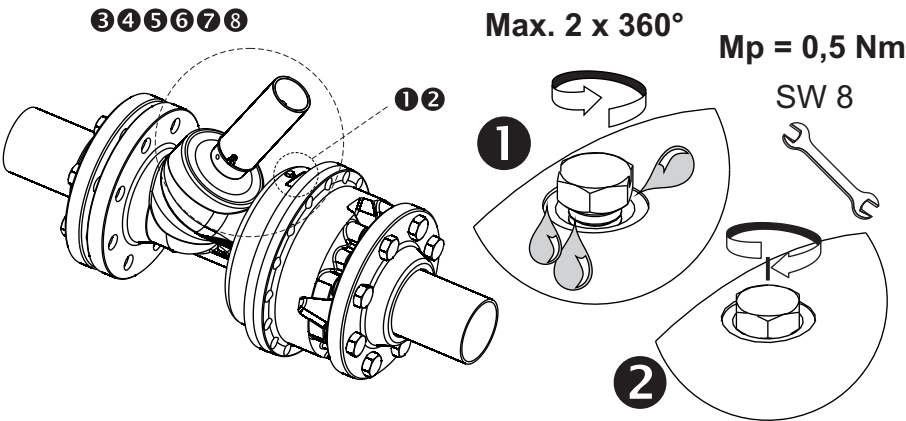
$p_1=4\text{bar}$ $p_2=3\text{bar}$ $\Delta p=1\text{bar}$
 $\Delta p < > 1\text{ bar} \Rightarrow \text{Flow} \approx$



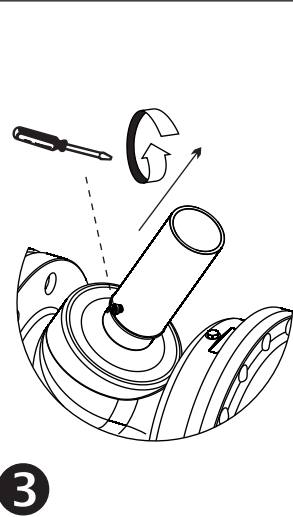
1



2

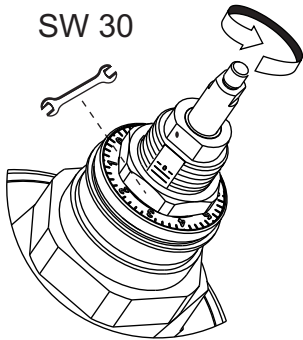


3



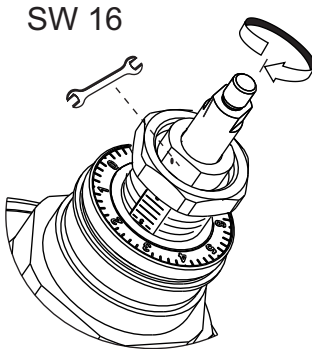
3

4



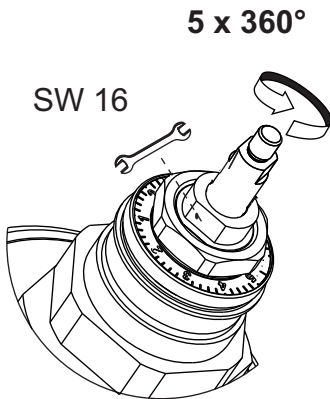
4

5



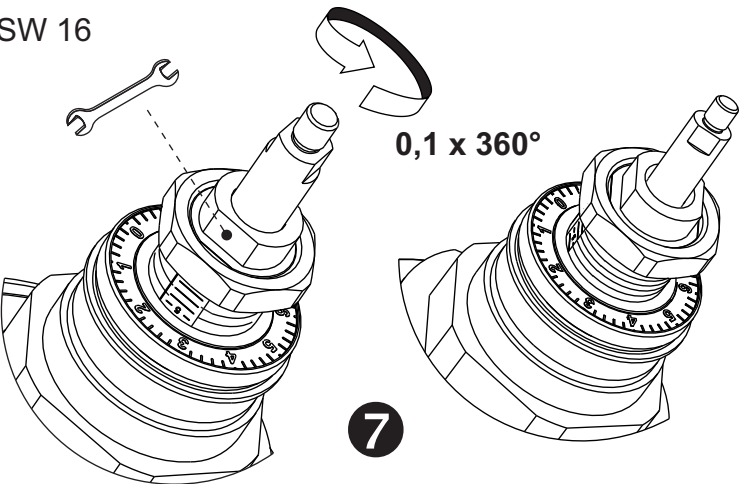
5

6



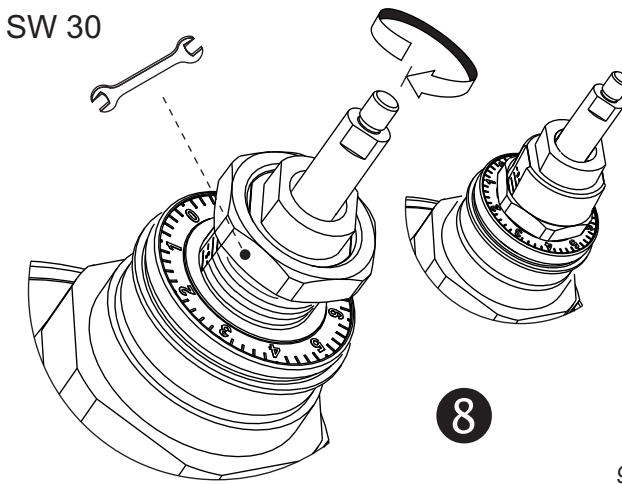
6

7



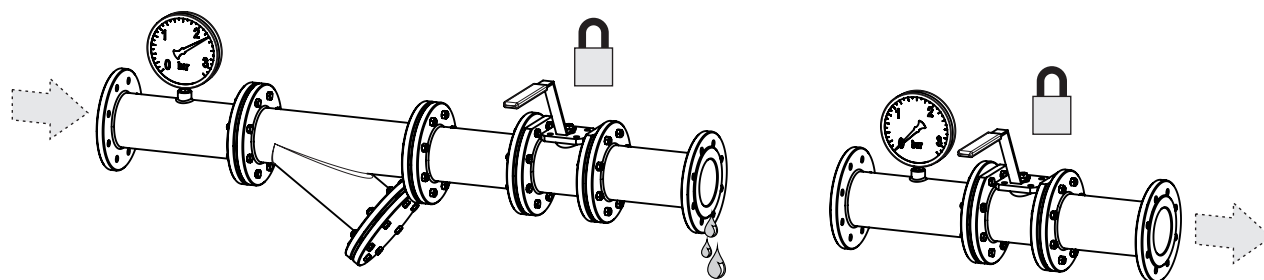
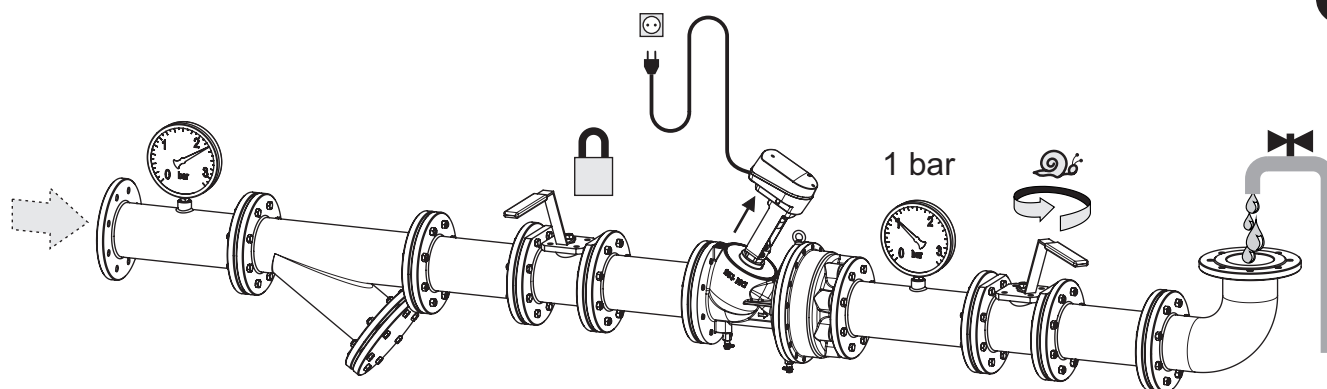
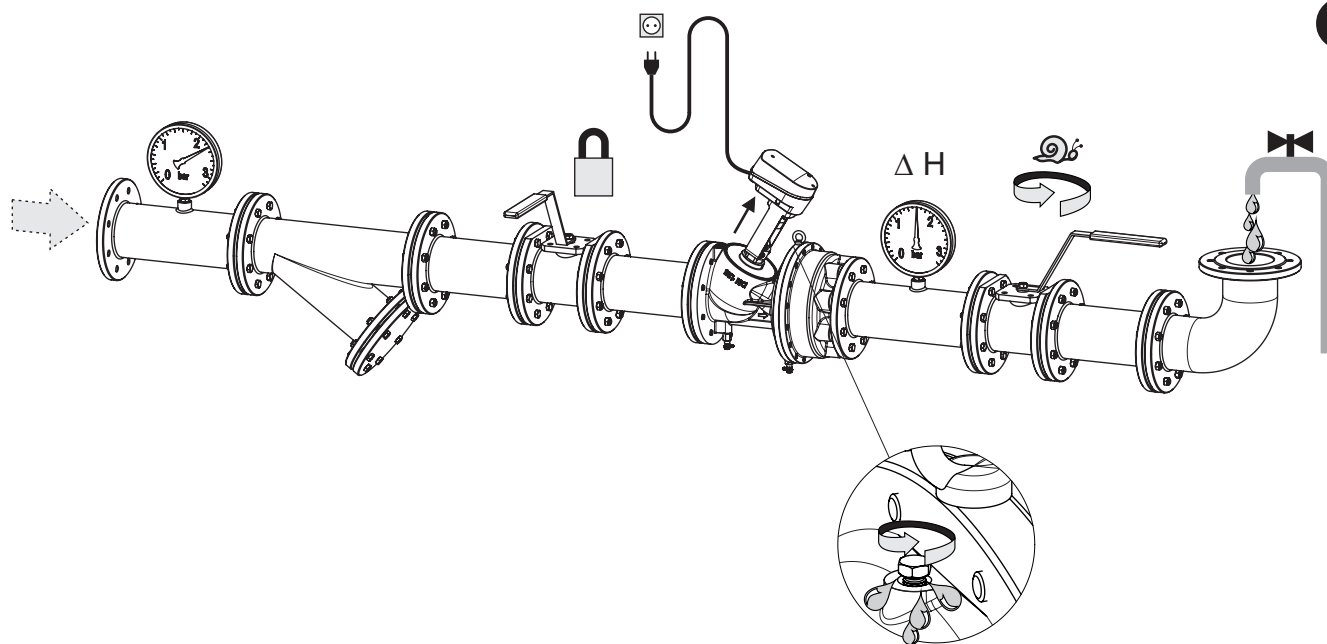
7

8



8

9

1

2

3

4
