

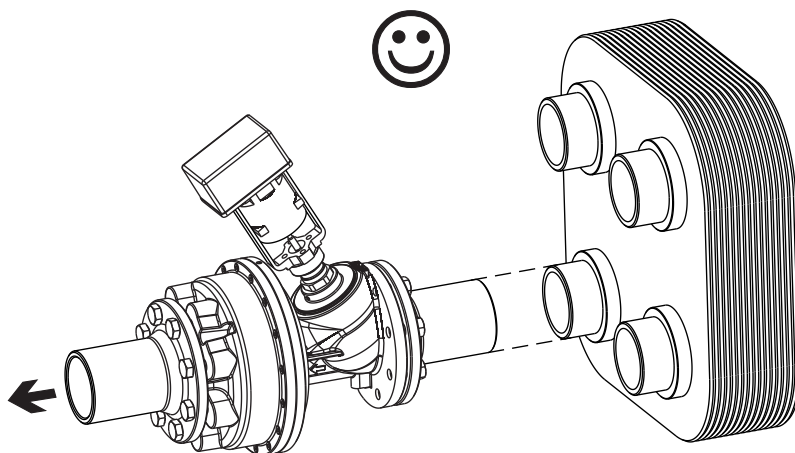
1



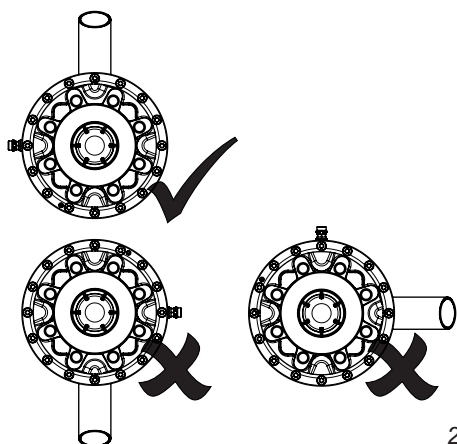
KTM 512 DN 100 NF											
Position - Einstellung											
	0,0	1,0	2,0	3,0	4,0	5,0	6,0	7,0	8,0	9,0	
,0	0,00	1,73	2,53	3,58	6,23	10,87	16,98	23,82	30,51	35,92	
,1	0,17	1,81	2,64	3,85	6,69	11,48	17,66	24,49	31,05	36,51	
,2	0,35	1,89	2,74	4,11	7,16	12,09	18,35	25,16	31,59	37,10	
,3	0,52	1,97	2,85	4,38	7,62	12,70	19,03	25,83	32,13	37,69	
,4	0,69	2,05	2,95	4,64	8,09	13,31	19,72	26,50	32,67	38,28	
,5	0,87	2,13	3,06	4,91	8,55	13,93	20,40	27,17	33,22	38,87	
,6	1,04	2,21	3,16	5,17	9,01	14,54	21,08	27,83	33,76	39,45	
,7	1,21	2,29	3,27	5,44	9,48	15,15	21,77	28,50	34,30	40,04	
,8	1,38	2,37	3,37	5,70	9,94	15,76	22,45	29,17	34,84	40,63	
,9	1,56	2,45	3,48	5,97	10,41	16,37	23,14	29,84	35,38	41,22	

Flow - Volumenstrom (m³/h)

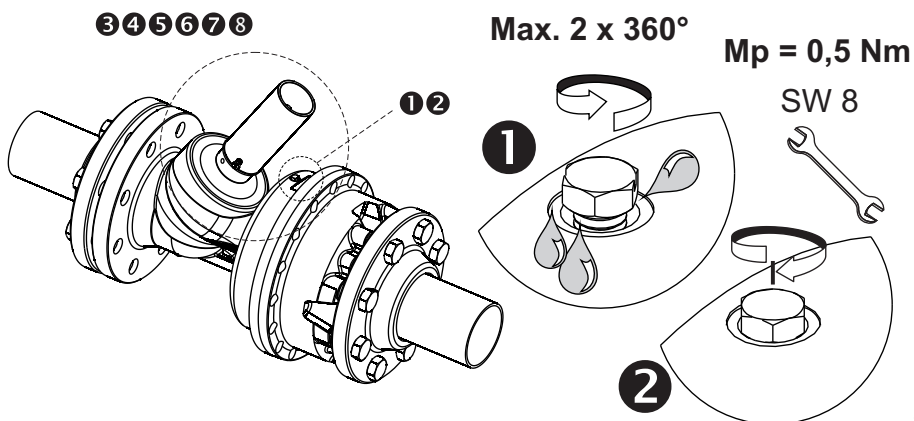
$p_1=4\text{bar}$ $p_2=3\text{bar}$ $\Delta p=1\text{bar}$
 $\Delta p < > 1 \text{ bar} \Rightarrow \text{Flow} \approx$



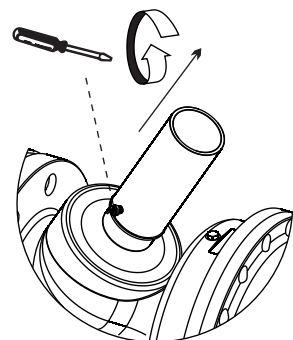
1



2

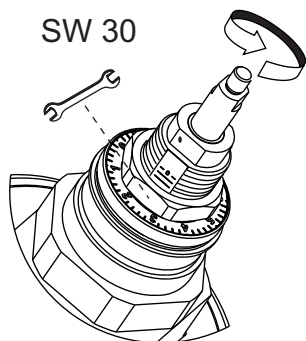


3



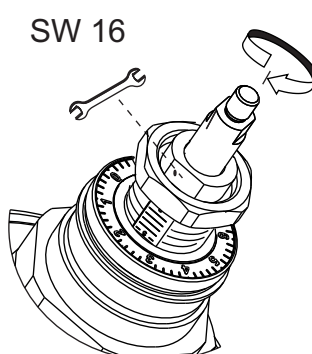
3

4



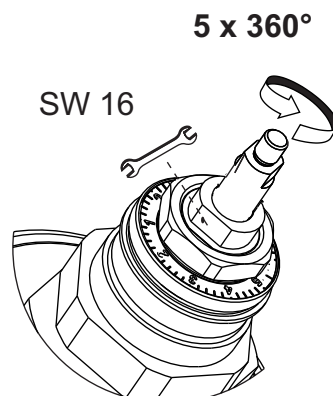
4

5



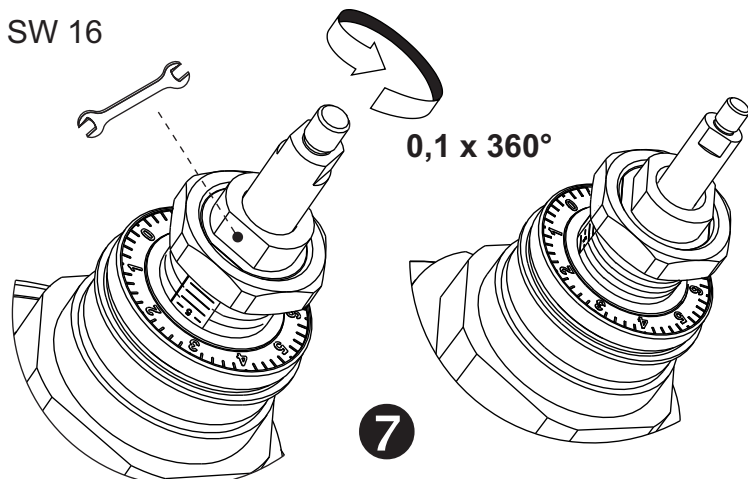
5

6



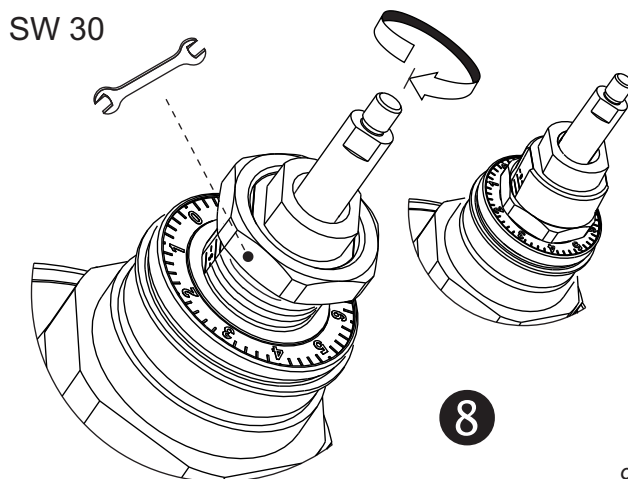
6

7



7

8



8

9

Approved by:

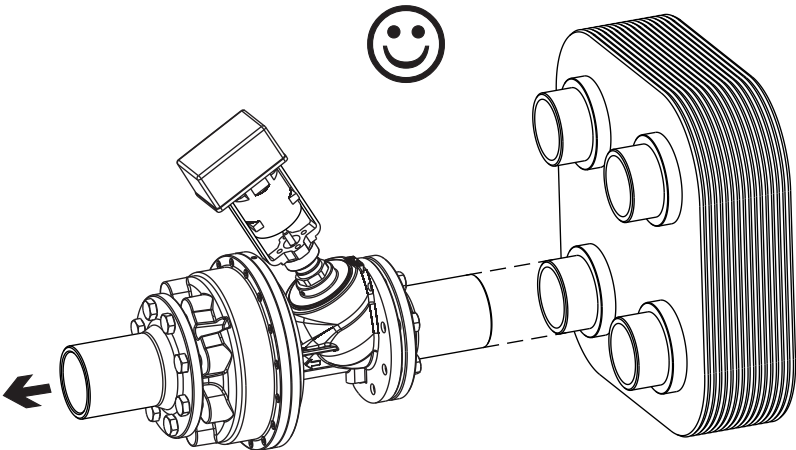
13239 - Navodilo (smeško) KTM 512 DN 100 NF by Alen Jerman 17.06.2016 - Rev. C

KTM 512 DN 100 HF

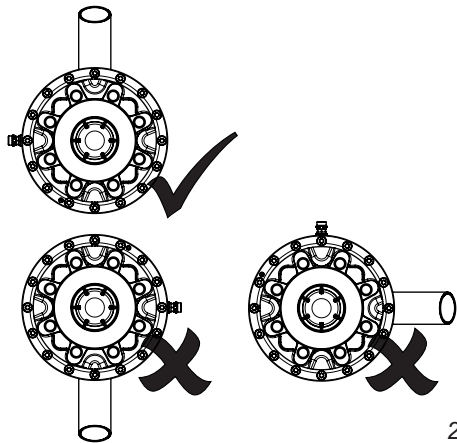


KTM 512 DN 100 HF											
Position - Einstellung											
	0,0	1,0	2,0	3,0	4,0	5,0	6,0	7,0	8,0	9,0	
,0	0,00	2,15	3,19	4,46	7,80	13,59	21,09	29,56	37,67	44,77	
,1	0,22	2,25	3,32	4,79	8,38	14,34	21,94	30,37	38,38	45,42	
,2	0,43	2,36	3,44	5,13	8,96	15,09	22,78	31,18	39,09	46,07	
,3	0,65	2,46	3,57	5,46	9,54	15,84	23,63	31,99	39,80	46,72	
,4	0,86	2,57	3,70	5,80	10,12	16,59	24,48	32,80	40,51	47,37	
,5	1,08	2,67	3,83	6,13	10,70	17,34	25,33	33,62	41,22	48,03	
,6	1,29	2,77	3,95	6,46	11,27	18,09	26,17	34,43	41,93	48,68	
,7	1,51	2,88	4,08	6,80	11,85	18,84	27,02	35,24	42,64	49,33	
,8	1,72	2,98	4,21	7,13	12,43	19,59	27,87	36,05	43,35	49,98	
,9	1,94	3,09	4,33	7,47	13,01	20,34	28,71	36,86	44,06	50,63	
Flow - Volumenstrom (m³/h)											

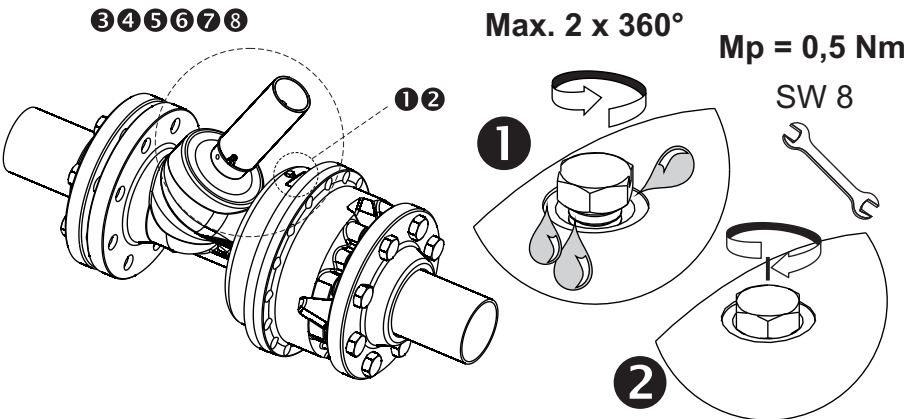
$p_1=4\text{bar}$ $p_2=3\text{bar}$ $\Delta p=1\text{bar}$
 $\Delta p < > 1 \text{ bar} \Rightarrow \text{Flow} = \approx$



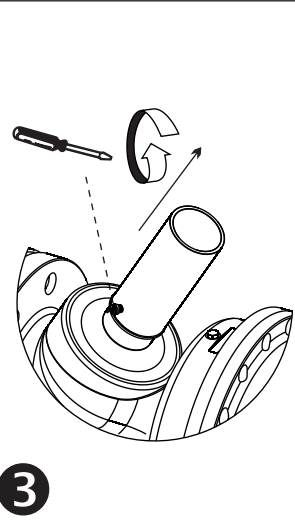
1



2

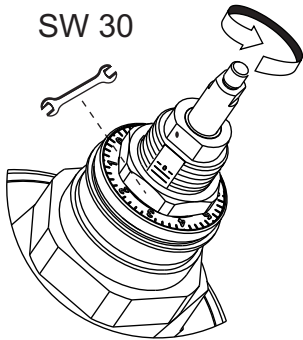


3



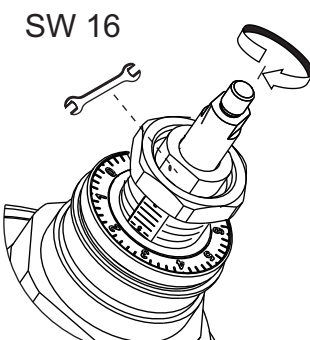
3

4



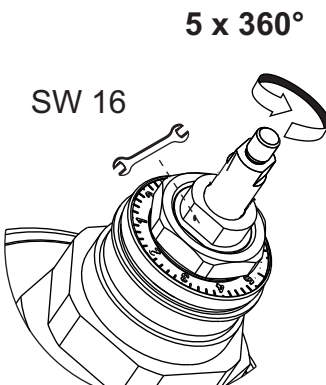
4

5



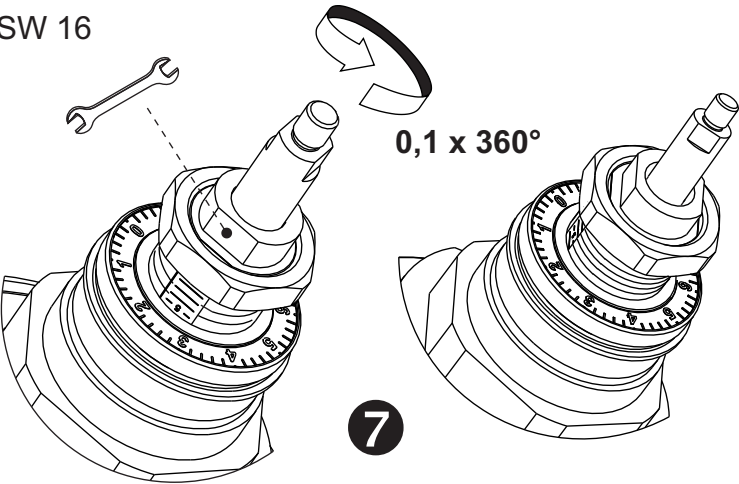
5

6



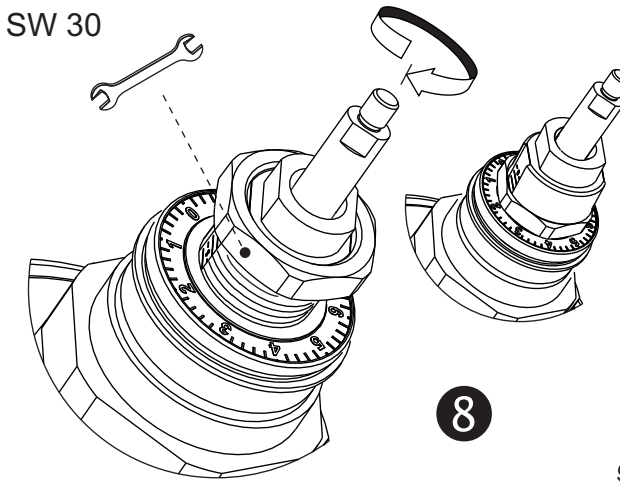
6

7



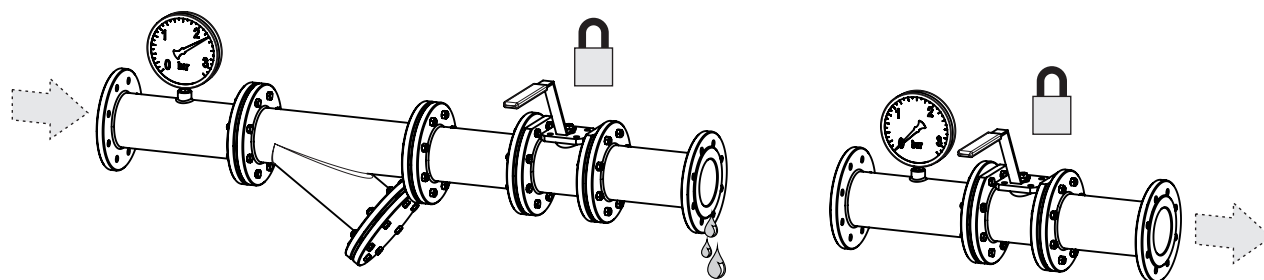
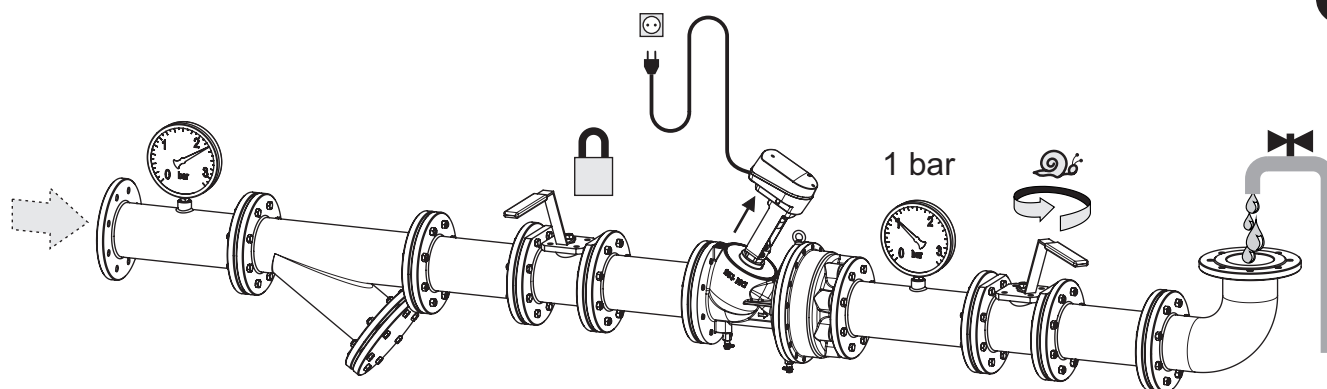
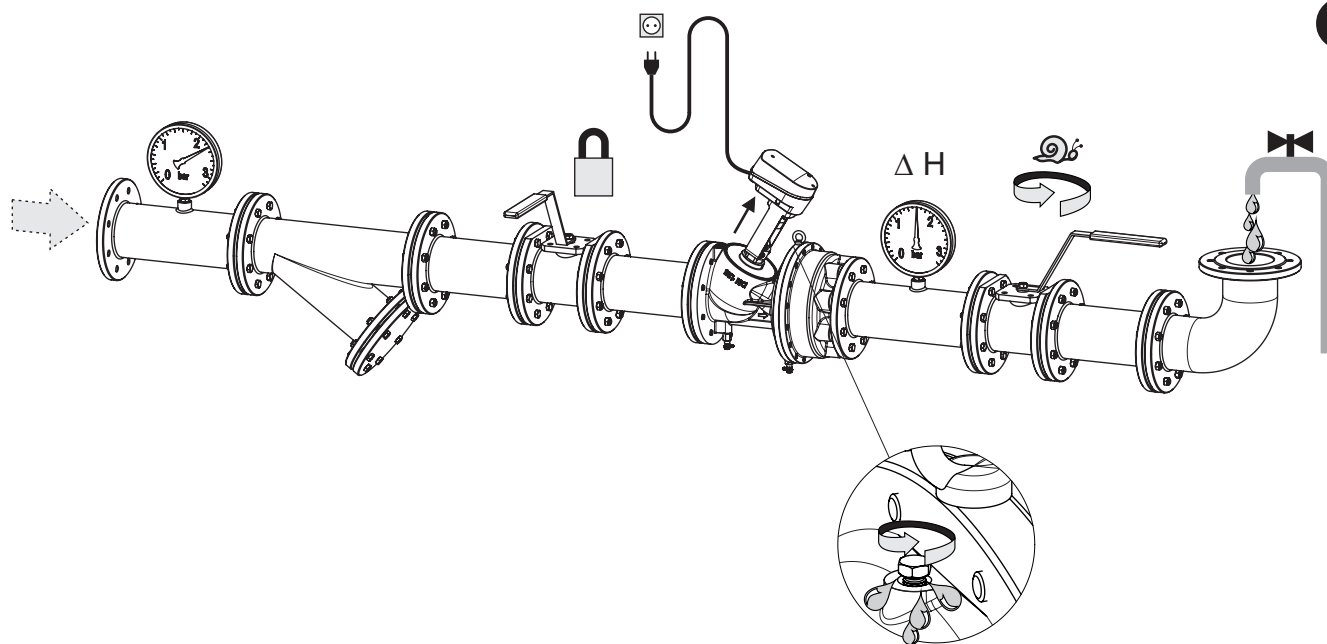
7

8



8

9

1

2

3

4
