

Thermal insulation for Zeparo ZU

Safety, Installation and Storage Instructions



These instructions are intended for qualified personnel. They must be read before starting of the installation work and stored in a safe place by the building operator. Personnel must possess the appropriate skills and training.

Store in a dry area and in the original packaging. Before installation, carry out a visual inspection of the thermal insulations. In the case of serious damage, the thermal insulation should not be used.

Appropriate measures for the regulations must be taken so that the permissible temperatures TS are complied with.

The system must be cooled down before the assembly and dismantling for the maintenance of Zeparo as Zeparo can be hot inside the thermal insulation. When carrying out installation and maintenance work, pay attention to the following symbols and information:



Important: High temperatures and pressurised hot water!

Application | Installation

- Thermal insulation for energy saving
- Can be used for Zeparo ZUT | ZUV | ZUD | ZUM | ZUK | ZUKM | ZUC | ZUCM
- Heating systems

Any applications other than the ones described must be agreed with Pneumatex.

Technical data

- Max. adm. temperature TS: 10 – 110 °C
- Fire rating B2 according to DIN 4102

Materials

- Half shells made of EPP (expanded polypropylene), anthracite
- The thermal insulation is disposed of using the normal domestic residual waste

Regulations | Inspection

The Zeparo ZHU thermal insulation has a fire rating B2 according to DIN 4102 and has a u value of approx. 0.035 W/mK. Therefore, the legal requirements for energy efficiency can be complied with. Furthermore, there are no standardised test regulations.

Installation » page 5

The Zeparo ZHU thermal insulation is made of EPP half shells which can be clipped together. The thermal insulation is always designed for single nominal diameter of pipe connection. Please observe the information on the packaging.

Operation | Maintenance

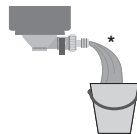


In the case of maintenance work, inspections and modifications of the Zeparo, the thermal insulation must first be removed. The EPP half shells are pulled apart for this. This must be performed if water drips through the joints of the thermal insulation. This indicates a leak which should be rectified immediately.

The Zeparo ZHU thermal insulation can be installed and removed as often as required.

Separator with de-sludging function

Separators for dirt particles ZUD, ZUM, combined separators ZUK, ZUKM and low loss headers ZUC, ZUCM must be flushed at regular intervals depending on the amount of dirt in the system water.* This can be done without removing the thermal insulation as the valve is outside of the insulation.



In the case of Zeparo with magnet, no dismantling of the thermal insulation is required* for the removal of the magnet and the flushing.



* The quantity of water removed by draining must be replaced, otherwise the pressure of the system may be affected.

» Observe separate Zeparo ZU Installation | Operation instructions

zeparo ZHU

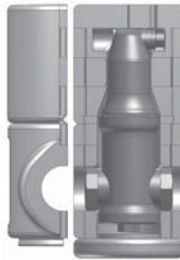
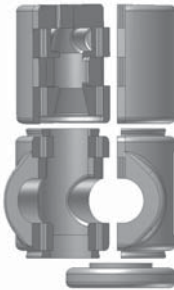
Montage | Montage | Installation | Montage

Zeparo ZHU...ZUT



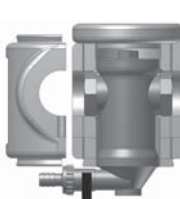
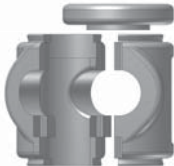
Zeparo ZUT

Zeparo ZHU...ZUV



Zeparo ZUV

Zeparo ZHU...ZUD | ZUM



Zeparo ZUD | ZUM

05

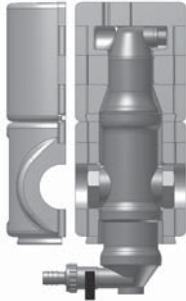
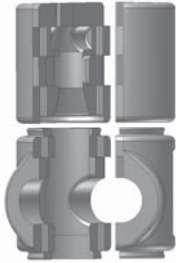
de

fr

en

nl

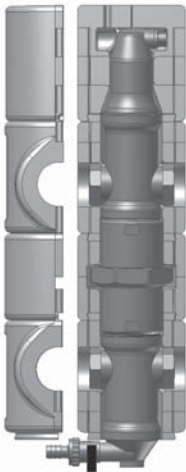
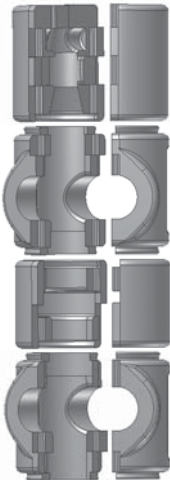
Zeparo ZHU...ZUK | ZUKM



Zeparo ZUK | ZUKM



Zeparo ZHU...ZUC | ZUCM



Zeparo ZUC | ZUCM

