

# STS



## Globe valves

Shut-off valve with measuring point

# STS

The STS shut-off valve provides a point for diagnostics to the system. Ideally suited for use on the secondary side in heating and cooling systems, and tap water systems.

## Key features

- > **Self-sealing measuring point**  
For quick and easy measuring.
- > **System diagnostics and power measuring**  
Providing an additional test point to the system enables quick and easy system diagnostics and power measuring with TA-SCOPE.
- > **AMETAL®**  
Dezincification resistant alloy that guarantees a longer valve lifetime and lowers the risk of leakage.



## Technical description

### Application:

Heating and cooling systems  
Tap water systems

### Functions:

Measuring  
Shut-off  
Draining (depending on valve type)

### Dimensions:

DN 15-50

### Pressure class:

PN 25

### Temperature:

Max. working temperature: 120°C.  
For higher temperatures (max. 150°C), please contact the nearest sales office.  
Min. working temperature: -20°C.

### Media:

Water or neutral fluids, water-glycol mixtures (0-57%).

### Material:

Valve body and bonnet: AMETAL®  
Sealing (body/bonnet): EPDM O-ring  
Valve plug: AMETAL®  
Seat seal: EPDM O-ring  
Spindle: AMETAL®  
Slip washer: PTFE  
Spindle seal: EPDM O-ring  
Spring: Stainless steel  
Handwheel: Polyamide

Measuring point: AMETAL®  
Sealings: EPDM  
Cap: Polyamide and TPE

Draining: AMETAL®  
Sealing: EPDM  
Gaskets: Fiber-based aramid

AMETAL® is the dezincification resistant alloy of IMI Hydronic Engineering.

### Marking:

Body: IMI, TA, PN 25/400 WWP, DN and inch size. DN 50 also CE.  
Handwheel: Valve type and DN.

## Measuring point

Measuring points are self-sealed. Remove the cap and insert the probe through the seal.

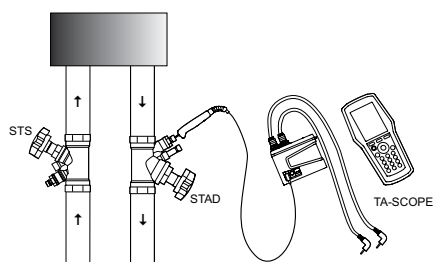
## Draining

Valves with draining for G3/4 or G1/2 hose connection.

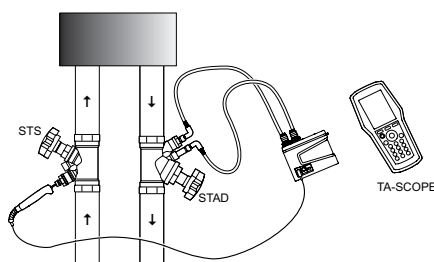
## Application examples

### Measure power over a circuit

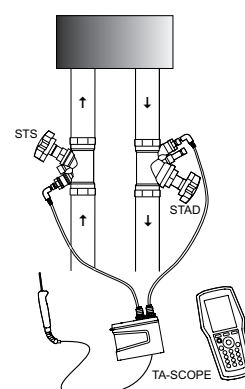
#### Step 1:



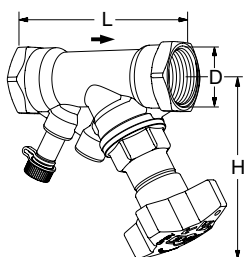
#### Step 2:



### Measure pressure drop over a circuit



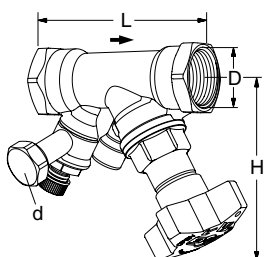
## Articles



### Without drain

Female threads. Thread according to ISO 228. Thread length according to ISO 7/1.

DN	D	L	H	Kvs	Kg	EAN	Article No
15*	G1/2	84	100	3,5	0,45	5902276836664	52 849-015
20*	G3/4	94	100	6,80	0,56	5902276836671	52 849-020
25	G1	105	105	9,80	0,76	5902276836688	52 849-025
32	G1 1/4	121	110	18,3	0,98	5902276836695	52 849-032
40	G1 1/2	126	120	25,4	1,2	5902276896484	52 849-040
50	G2	155	120	42,4	2,0	5902276896491	52 849-050



### With drain

Female threads. Thread according to ISO 228. Thread length according to ISO 7/1.

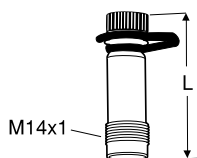
DN	D	L	H	Kvs	Kg	EAN	Article No
<b>d = G3/4</b>							
15*	G1/2	84	100	3,5	0,60	5902276896569	52 849-615
20*	G3/4	94	100	6,8	0,66	5902276896576	52 849-620
25	G1	105	105	9,8	0,86	5902276896583	52 849-625
32	G1 1/4	121	110	18,3	1,2	5902276896590	52 849-632
40	G1 1/2	126	120	25,4	1,5	5902276896606	52 849-640
50	G2	155	120	42,4	2,1	5902276896613	52 849-650
<b>d = G1/2</b>							
15*	G1/2	84	100	3,5	0,60	5902276896507	52 849-215
20*	G3/4	94	100	6,8	0,66	5902276896514	52 849-220
25	G1	105	105	9,8	0,86	5902276896521	52 849-225
32	G1 1/4	121	110	18,3	1,2	5902276896538	52 849-232
40	G1 1/2	126	120	25,4	1,5	5902276896545	52 849-240
50	G2	155	120	42,4	2,1	5902276896552	52 849-250

→ = Flow direction

Kvs = m<sup>3</sup>/h at a pressure drop of 1 bar and fully open valve.

\*) Can be connected to smooth pipes by KOMBI compression coupling.

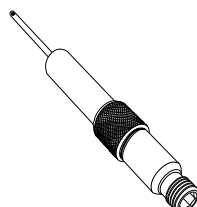
## Accessories



### Measuring point

Max 120°C (intermittent 150°C)  
AMETAL®/EPDM

L	EAN	Article No
44	7318792813207	52 179-014
103	7318793858108	52 179-015



### Measuring point, extension 60 mm

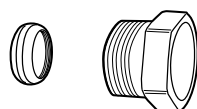
(not for 52 179-000/-601)  
Can be installed without draining of the system.  
AMETAL®/Stainless steel/EPDM

L	EAN	Article No
60	7318792812804	52 179-006



### Allen key

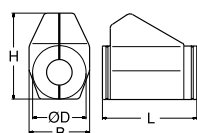
[mm]		EAN	Article No
5	Draining	7318792836107	52 187-105



### KOMBI compression coupling

Max.: 100°C  
(For more information see catalogue leaflet KOMBI.)

Male pipe threads on thrust screw	For pipes, diameter	EAN	Article No
G1/2	10	7318792874901	53 235-109
G1/2	12	7318792875007	53 235-111
G1/2	14	7318792875106	53 235-112
G1/2	15	7318792875205	53 235-113
G1/2	16	7318792875304	53 235-114
G3/4	15	7318792875403	53 235-117
G3/4	18	7318792875601	53 235-121
G3/4	22	7318792875700	53 235-123



### Insulation

For heating/cooling  
CFC-free polyurethane. Covered with grey PVC.

See catalogue leaflet "Prefab insulations" for complete details.

For DN	L	H	D	B	EAN	Article No
15, 20	155	135	90	103	7318792839108	52 189-615
25	175	142	94	103	7318792839306	52 189-625
32	195	156	106	103	7318792839504	52 189-632
40	214	169	108	113	7318792839702	52 189-640
50	245	178	108	114	7318792839900	52 189-650

The products, texts, photographs, graphics and diagrams in this document may be subject to alteration by IMI Hydronic Engineering without prior notice or reasons being given. For the most up to date information about our products and specifications, please visit [www.imi-hydronic.com](http://www.imi-hydronic.com).