

BPV – NPT threads



Differential pressure relief valves

Proportional relief valve

BPV – NPT threads

Used in heating and cooling systems, the BPV proportional relief valve works quietly to ensure a minimum flow level in the pump while maintaining the desired supply temperature when operating at low loads.

Key features

- > **Adjustable set-point**
For accurate differential pressure control.
- > **Shut-off function**
For easy maintenance.
- > **AMETAL®**
Dezincification resistant alloy that guarantees a longer valve lifetime, and lowers the risk of leakage.



Technical description

Applications:

Heating and cooling systems
Tapwater systems

Function:

Proportional relief
Adjustable differential pressure (Δp)
Shut-off

Dimensions:

DN 15-32

Pressure class:

PN 20

Setting range:

10-60 kPa

Temperature:

Max working temperature: 120°C
Min working temperature: -20°C

Materials:

Valve body: AMETAL®
Bonnet: AMETAL®
Cone: PTFE coated AMETAL®
Stem: AMETAL®
Union nuts: Brass
Sleeve: Brass
Cap: Brass
Gaskets: Fiber-based aramid
Springs: Stainless steel
O-rings: EPDM rubber
Guide ring: PTFE

AMETAL® is the dezincification resistant alloy of IMI Hydronic Engineering.

Marking:

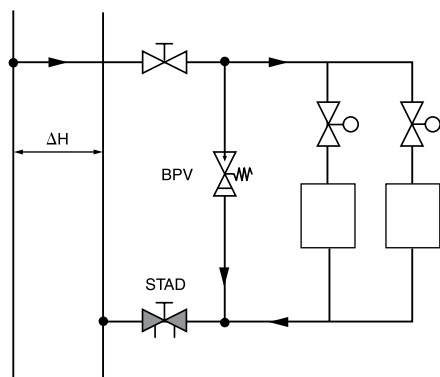
Valve type, DN, inch size and flow direction arrow.

Connection:

Pipe threads NPT according to ANSI/ASME B1.20.1-1983.
Complete thread according to ANSI B16.15-1985.

Installation

Application example

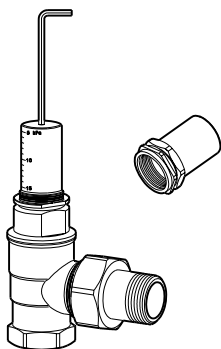


In installations with radiator valves, in which many of the radiator valves have closed, a big part of the pump head will affect the valves since the pressure drop in pipes and accessories has decreased. If the available differential pressure is higher than 30 kPa, noise may occur.

Install the BPV in the circuit after the balancing valve and between the supply and return pipe. The BPV is adjustable and opens at the preset differential pressure, making it possible to maintain desired pressure and flow in the distribution system. By that, the temperature in the pipes is also maintained and the pump is ensured a minimum flow.

Setting

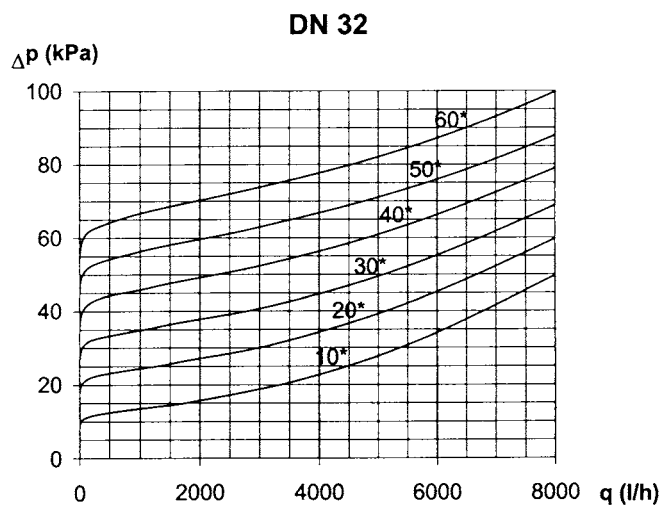
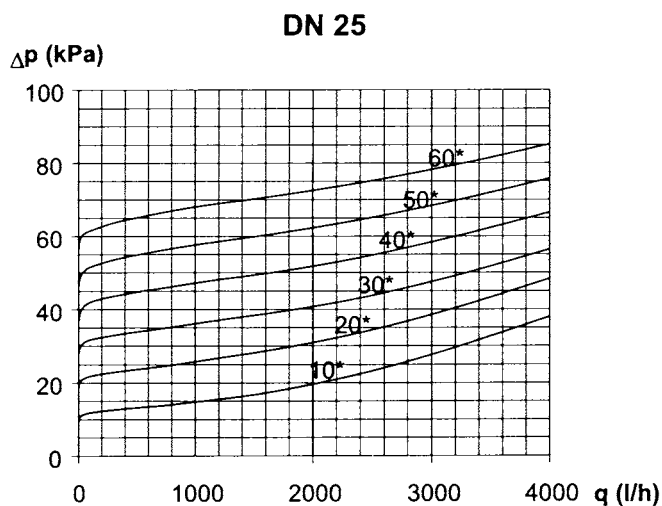
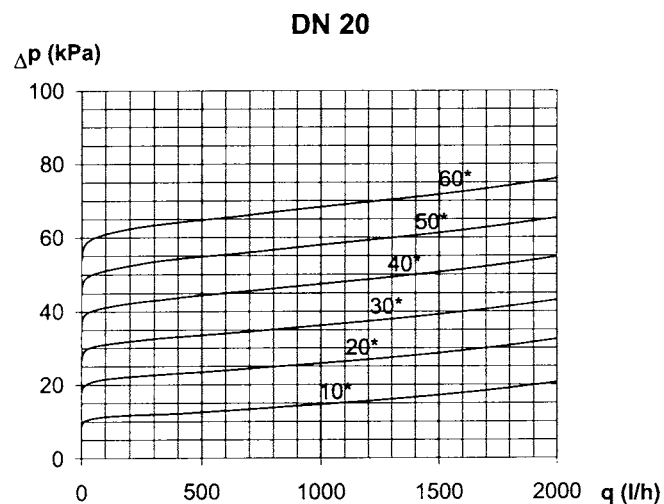
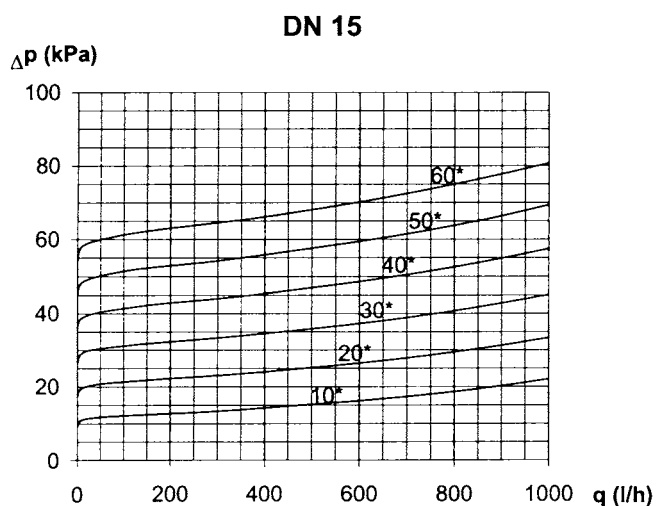
Use an Allen key to adjust the BPV valve to operate at the required differential pressure.



Diagram

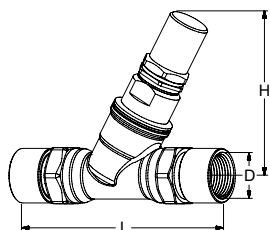
Valve characteristics

Adjust the BPV valve to the required differential pressure (10-60 kPa). The valve characteristics will be as shown in the diagrams below.



*) Differential pressure setting.

Articles



Straight

10-60 kPa

DN	(size)	D	L	H	EAN	Article No
15	1/2"	1/2 NPT	118	93	7318794028005	52 198-715
20	3/4"	3/4 NPT	135	93	7318794028104	52 198-720
25	1"	1 NPT	150	103	7318794028203	52 198-725
32	1 1/4"	1 1/4 NPT	172	105	7318794028302	52 198-732

The products, texts, photographs, graphics and diagrams in this document may be subject to alteration by IMI Hydronic Engineering without prior notice or reasons being given. For the most up to date information about our products and specifications, please visit www.imi-hydronic.com.