

STS

– NPT threads



Globe valves

Shut-off valve with measuring point



Engineering
GREAT Solutions

STS – NPT threads

The STS shut-off valve provides a point for diagnostics to the system. Ideally suited for use on the secondary side in heating and cooling systems, and tap water systems.

Key features

- > **Self-sealing measuring point**
For quick and easy measuring.
- > **System diagnostics and power measuring**
Providing an additional test point to the system enables quick and easy system diagnostics and power measuring with TA-SCOPE.
- > **AMETAL®**
Dezincification resistant alloy that guarantees a longer valve lifetime, and lowers the risk of leakage.



Technical description

Application:

Heating and cooling systems
Tap water systems

Functions:

Measuring
Shut-off
Draining (optional)

Dimensions:

DN 10-50

Pressure class:

PN 20

Temperature:

Max. working temperature: 120°C.
For higher temperatures (max. 150°C),
please contact the nearest sales office.
Min. working temperature: -20°C.

Material:

The valves are made of AMETAL®
Seat seal: Stem with EPDM O-ring
Spindle seal: EPDM O-ring
Handwheel: Polyamide

AMETAL® is the dezincification resistant alloy of IMI Hydronic Engineering.

Marking:

Body: TA, PN 20/150, DN and inch size.
Handwheel: Valve type and DN.

Marking:

Body: TA, PN 20/150, DN and inch size.
Handwheel: Valve type and size.

Connection:

Pipe threads NPT according to ANSI/
ASME B1.20.1-1983. Complete thread
according to ANSI B16.15-1985.

Measuring point

Measuring point are self-sealed. Remove the cap and insert the probe through the seal.

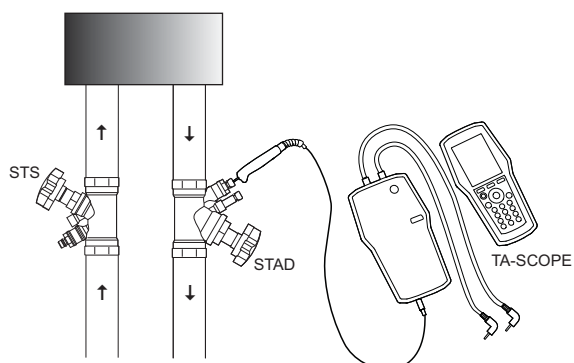
Draining

Valves with draining for UNS 1 1/16"x11.5 hose connection.

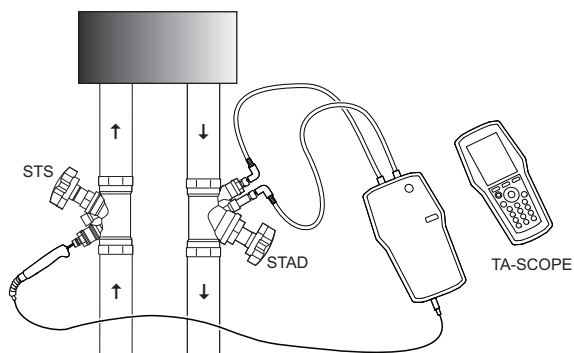
Application examples

Measure power over a circuit

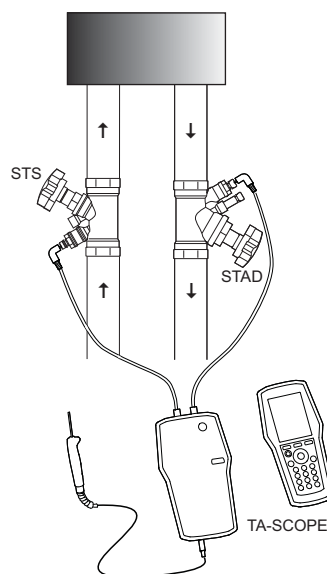
Step 1:



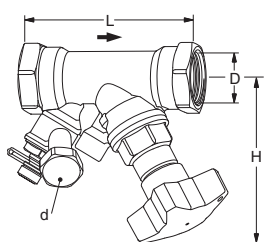
Step 2:



Measure pressure drop over a circuit



Articles



Female threads

Threads according to ANSI/ASME B1.20.1-1983.

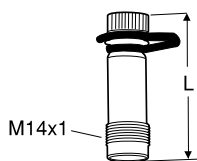
With drain

DN	D	L	H	Kvs	Kg	EAN	Article No
d = UNS 1 1/16" x 11.5							
15	1/2 NPT	90	100	6,50	0,62	7318794026209	52 149-515
20	3/4 NPT	97	100	6,8	0,68	7318794026308	52 149-520
25	1 NPT	110	105	9,8	0,88	7318794026407	52 149-525
32	1 1/4 NPT	124	110	18,3	1,2	7318794026506	52 149-532
40	1 1/2 NPT	130	120	25,4	1,5	7318794026605	52 149-540
50	2 NPT	155	120	42,4	2,1	7318794026704	52 149-550

→ = Flow direction

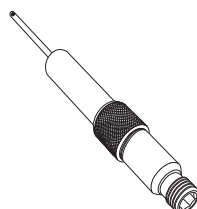
Kvs = m³/h at a pressure drop of 1 bar and fully open valve.

Accessories



Measuring point
Max 120°C (intermittent 150°C)

L	EAN	Article No
44	7318792813207	52 179-014
103	7318793858108	52 179-015



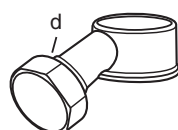
Measuring point
Extensions 60 mm (not for 52 179-000/-601)
Can be installed without draining of the system.

L	EAN	Article No
60	7318792812804	52 179-006



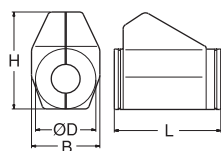
Allen key

[mm]		EAN	Article No
5	Draining	7318792836107	52 187-105



Draining kit
Can be installed during operation

d	EAN	Article No
UNS 1 1/16"x11.5	7318792815102	52 179-997



Insulation
For heating/cooling
See catalogue leaflet Prefab insulations for complete details.

For DN	L	H	D	B	EAN	Article No
15,	155	135	90	103	7318792839108	52 189-615
20						
25	175	142	94	103	7318792839306	52 189-625
32	195	156	106	103	7318792839504	52 189-632
40	214	169	108	113	7318792839702	52 189-640
50	245	178	108	114	7318792839900	52 189-650