

STS



Globe valves

Shut-off valve with measuring point



Engineering
GREAT Solutions

STS

The STS shut-off valve provides a point for diagnostics to the system. Ideally suited for use on the secondary side in heating and cooling systems, and tap water systems.

Key features

- > **Self-sealing measuring point**
For quick and easy measuring.
- > **System diagnostics and power measuring**
Providing an additional test point to the system enables quick and easy system diagnostics and power measuring with TA-SCOPE.
- > **AMETAL®**
Dezincification resistant alloy that guarantees a longer valve lifetime, and lowers the risk of leakage.



Technical description

Application:

Heating and cooling systems
Tap water systems

Functions:

Measuring
Shut-off
Draining (optional)

Dimensions:

DN 15-50

Pressure class:

PN 20

Temperature:

Max. working temperature: 120°C.
For higher temperatures (max. 150°C),
please contact the nearest sales office.
Min. working temperature: -20°C.

Material:

The valves are made of AMETAL®
Seat seal: Stem with EPDM O-ring
Spindle seal: EPDM O-ring
Handwheel: Polyamide

AMETAL® is the dezincification resistant alloy of IMI Hydronic Engineering.

Marking:

Body: TA, PN 20/150, DN and inch size.
Handwheel: Valve type and DN.

Measuring point

Measuring point are self-sealed. Remove the cap and insert the probe through the seal.

Draining

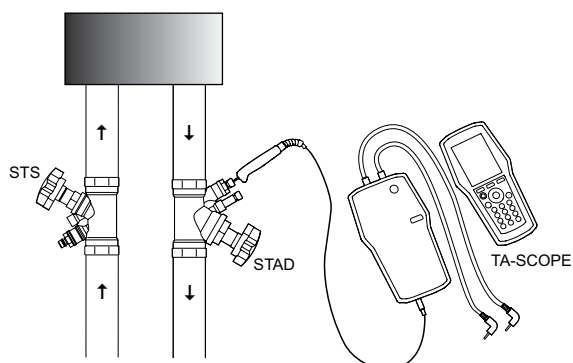
Valves with draining for G1/2 or G3/4 hose connection.
Valves without draining have a sleeve.

This sleeve can temporarily be removed and a draining kit is fitted, which is available as an accessory.

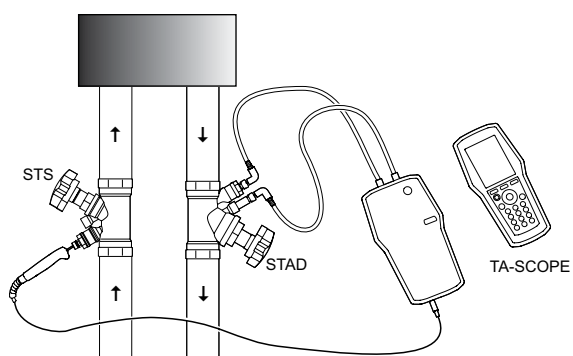
Application examples

Measure power over a circuit

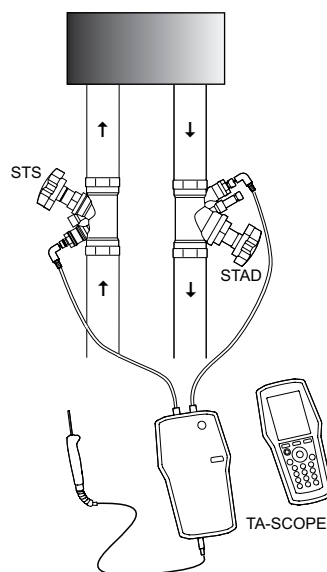
Step 1:



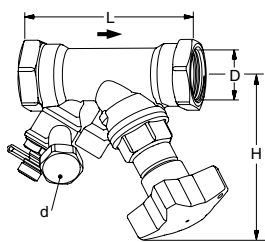
Step 2:



Measure pressure drop over a circuit



Articles



Female threads

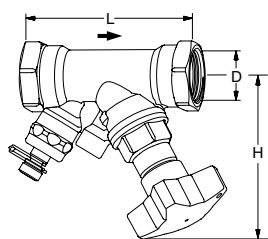
Thread according to ISO 228. Thread length according to ISO 7/1.
With drain

DN	D	L	H	Kvs	Kg	EAN	Article No
d = G1/2							
15*	G1/2	90	100	6,50	0,62	7318792751004	52 149-215
20*	G3/4	97	100	6,8	0,68	7318792751103	52 149-220
25	G1	110	105	9,8	0,88	7318792751202	52 149-225
32	G1 1/4	124	110	18,3	1,2	7318792751301	52 149-232
40	G1 1/2	130	120	25,4	1,5	7318792751400	52 149-240
50	G2	155	120	42,4	2,1	7318792751509	52 149-250
d = G3/4							
15*	G1/2	90	100	6,50	0,62	7318792752209	52 149-615
20*	G3/4	97	100	6,8	0,68	7318792752308	52 149-620
25	G1	110	105	9,8	0,88	7318792752407	52 149-625
32	G1 1/4	124	110	18,3	1,2	7318792752506	52 149-632
40	G1 1/2	130	120	25,4	1,5	7318792752605	52 149-640
50	G2	155	120	42,4	2,1	7318792752704	52 149-650

→ = Flow direction

Kvs = m³/h at a pressure drop of 1 bar and fully open valve.

*) Can be connected to smooth pipes by KOMBI compression coupling.



Female threads

Thread according to ISO 228. Thread length according to ISO 7/1.
Without drain (can be installed during operation)

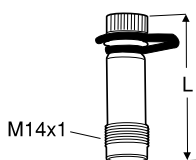
DN	D	L	H	Kvs	Kg	EAN	Article No
15*	G1/2	90	100	3,5	0,52	7318792750403	52 149-015
20*	G3/4	97	100	6,80	0,58	7318792750502	52 149-020
25	G1	110	105	9,80	0,78	7318792750601	52 149-025
32	G1 1/4	124	110	18,3	1,0	7318792750700	52 149-032
40	G1 1/2	130	120	25,4	1,4	7318792750809	52 149-040
50	G2	155	120	42,4	2,0	7318792750908	52 149-050

→ = Flow direction

Kvs = m³/h at a pressure drop of 1 bar and fully open valve.

*) Can be connected to smooth pipes by KOMBI compression coupling.

Accessories



Measuring point

Max 120°C (intermittent 150°C)

L	EAN	Article No
44	7318792813207	52 179-014
103	7318793858108	52 179-015



Measuring point

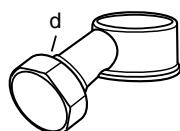
Extensions 60 mm (not for 52 179-000/-601). Can be installed without draining of the system.

L	EAN	Article No
60	7318792812804	52 179-006



Allen key

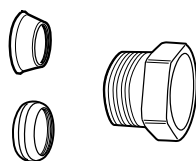
[mm]	EAN	Article No
5	Draining	7318792836107
		52 187-105



Draining kit

Can be installed during operation

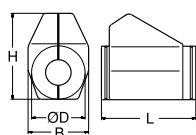
d	EAN	Article No
G1/2	7318792814907	52 179-990
G3/4	7318792815003	52 179-996



KOMBI compression coupling

Max.: 100°C
(See catalogue leaflet KOMBI.)

Male pipe threads on thrust screw	For pipes, diameter	EAN	Article No
G1/2	10	7318792874901	53 235-109
G1/2	12	7318792875007	53 235-111
G1/2	14	7318792875106	53 235-112
G1/2	15	7318792875205	53 235-113
G1/2	16	7318792875304	53 235-114
G3/4	15	7318792875403	53 235-117
G3/4	18	7318792875601	53 235-121
G3/4	22	7318792875700	53 235-123



Insulation

For heating/cooling
See catalogue leaflet Prefab insulations for complete details.

For DN	L	H	D	B	EAN	Article No
15, 20	155	135	90	103	7318792839108	52 189-615
25	175	142	94	103	7318792839306	52 189-625
32	195	156	106	103	7318792839504	52 189-632
40	214	169	108	113	7318792839702	52 189-640
50	245	178	108	114	7318792839900	52 189-650